



28
Whiteadmiral
Place
Newcastle Upon
Tyne
NE13 9EJ

28 Whiteadmiral Place
Newcastle Great Park
Newcastle Upon Tyne
NE13 9EJ



5



3



2



B

Guide Price
£575,000

This fabulous 5 bedroomed detached house is beautifully presented and appointed, providing superb family accommodation, within this sought after location. Arranged over 3 floors, this well proportioned property is ideal for the discerning family buyer.



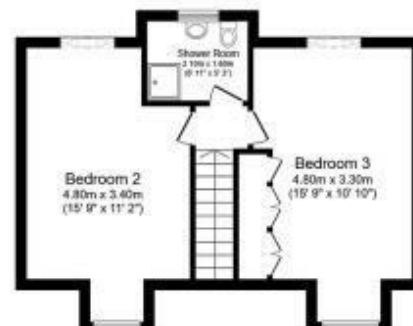




Ground Floor
Floor area 59.8 sq.m. (644 sq.ft.)



First Floor
Floor area 59.8 sq.m. (644 sq.ft.)



Second Floor
Floor area 41.7 sq.m. (449 sq.ft.)

Total floor area: 161.4 sq.m. (1,737 sq.ft.)

This floor plan is for illustrative purposes only. It is not drawn to scale. Any measurements, floor areas (including any total floor area), openings and orientations are approximate. No details are guaranteed, they cannot be relied upon for any purpose and do not form any part of any agreement. No liability is taken for any error, omission or misstatement. A party must rely upon its own inspection(s).



| Energy Efficiency Rating | | |
|---|-------------------------|-----------|
| | Current | Potential |
| Very energy efficient - lower running costs | | |
| (92 plus) A | | 93 |
| (81-91) B | 85 | |
| (69-80) C | | |
| (55-68) D | | |
| (39-54) E | | |
| (21-38) F | | |
| (1-20) G | | |
| Not energy efficient - higher running costs | | |
| England & Wales | EU Directive 2002/91/EC | |

EPC Rating: B
Council Tax Band: F

DIRECTIONS

CONTACT

2 Middleton South
Newcastle Great Park
Newcastle upon Tyne
NE13 9BJ

E: greatpark@goodfellowsestateagents.com

T: 0191 2848100

<https://www.goodfellowsestateagents.com/>

