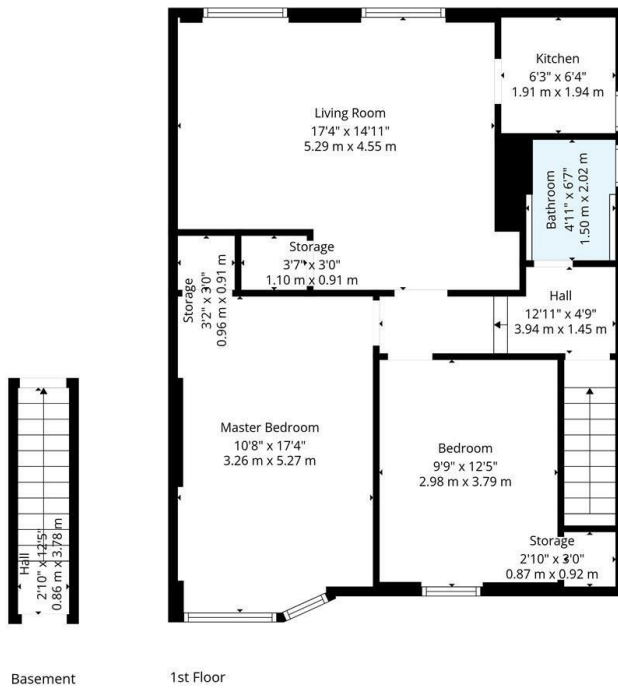




37 Bucklaw Terrace, Glasgow, G52 3BW

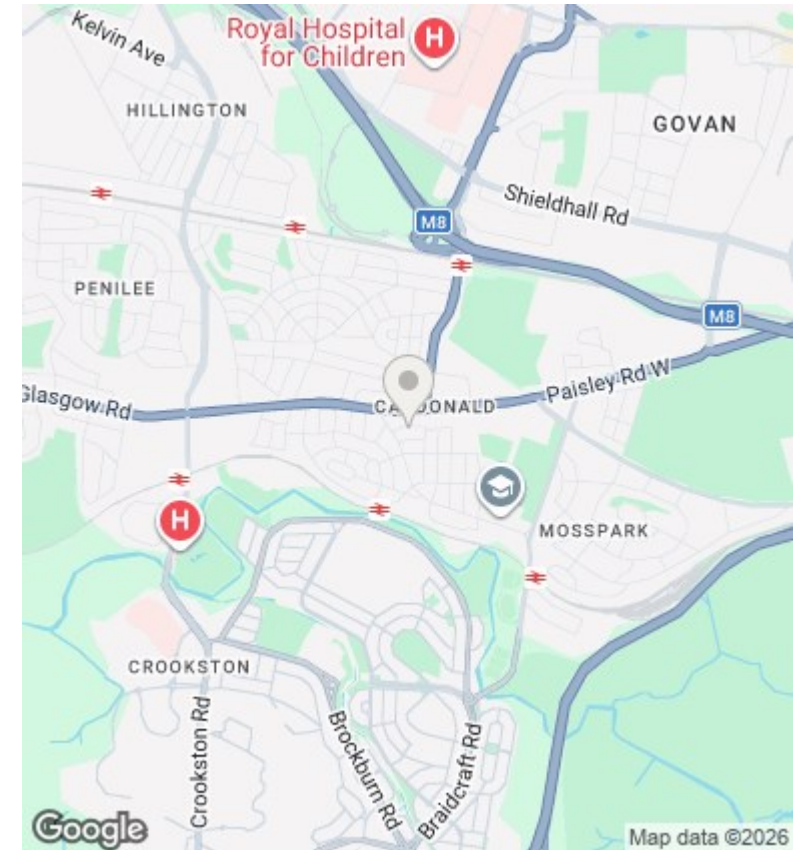
Offers Over £120,000

- Two bedroom upper cottage flat with main door access
- Spacious Lounge Diner overlooking the rear of the property
- Modern internal decor
- EER Band
- Landscaped fully enclosed private garden grounds to the side and rear
- Both bedrooms overlooking the front with built in storage
- Recently replaced Roof
- Off Street parking via driveway to the side
- Modern well equipped kitchen and bathroom
- Double glazing and gas central heating



TOTAL: 763 sq. ft, 71 m²
 Basement: 35 sq. ft, 3 m², 1st floor: 728 sq. ft, 68 m²
 EXCLUDED AREAS: STORAGE: 30 sq. ft, 3 m², WALLS: 73 sq. ft, 6 m²

Floor Plan Created by Cubicasa App. Measurements Deemed Highly Reliable but Not Guaranteed.



Energy Efficiency Rating		
	Current	Potential
<i>Very energy efficient - lower running costs</i>		
(92 plus) A		
(81-91) B		
(69-80) C	72	78
(55-68) D		
(39-54) E		
(21-38) F		
(1-20) G		
<i>Not energy efficient - higher running costs</i>		
Scotland	EU Directive 2002/91/EC	

Directions

Viewings

Viewings by arrangement only. Call 01417262111 to make an appointment.

Council Tax Band

EPC Rating:

C

