

**LONDON  
VICTORIA  
GROUPS** 



## **Wenborn Building, 23 Penny Brookes Street**

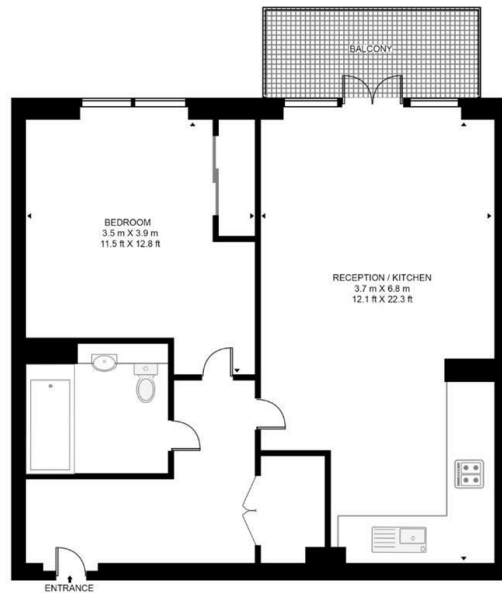
, London E15 1GW

- One-bedroom, one-bathroom apartment
- Secure entry system
- Lift access
- Excellent connections via the Central and Jubilee Lines, DLR, Overground
- EPC-B
- Open-plan living and kitchen area
- Balcony
- Situated close to Stratford Station
- Easy reach of Westfield Stratford City, Queen Elizabeth Olympic Park
- CTB-C

**£450,000 Leasehold**

Local Authority **Newham**  
Council Tax Band **C**  
EPC Rating **B**

WENBORN BUILDING, NEW STRATFORD WORKS  
APPROXIMATE GROSS INTERNAL FLOOR AREA 543 SQ. FT (50.5 SQ.M)



FOURTH FLOOR

**HDVA**

This floor plan has been defined by the RICS Code of Measurement. This floor plan and all others are for approximate representative purposes only and upon usage is agreed to as such by the client.  
WWW: hdvirtualart.com | TEL: 0203 874 1567 | EMAIL: info@hdvirtualart.com

**London Office Office**  
Spaces Victoria, 25 Wilton Road, Pimlico,  
London, SW1V 1LW

**Contact**  
020 3084 3094  
XL@londonvictoriagroups.co.uk  
www.londonvictoriagroups.co.uk

Agents Note: Whilst every care has been taken to prepare these particulars, they are for guidance purposes only. All measurements are approximate and for general guidance purposes only and whilst every care has been taken to ensure accuracy, they should not be relied upon and potential buyers/tenants are advised to recheck the measurements.

