

## Rainville Road, W6

£800,000

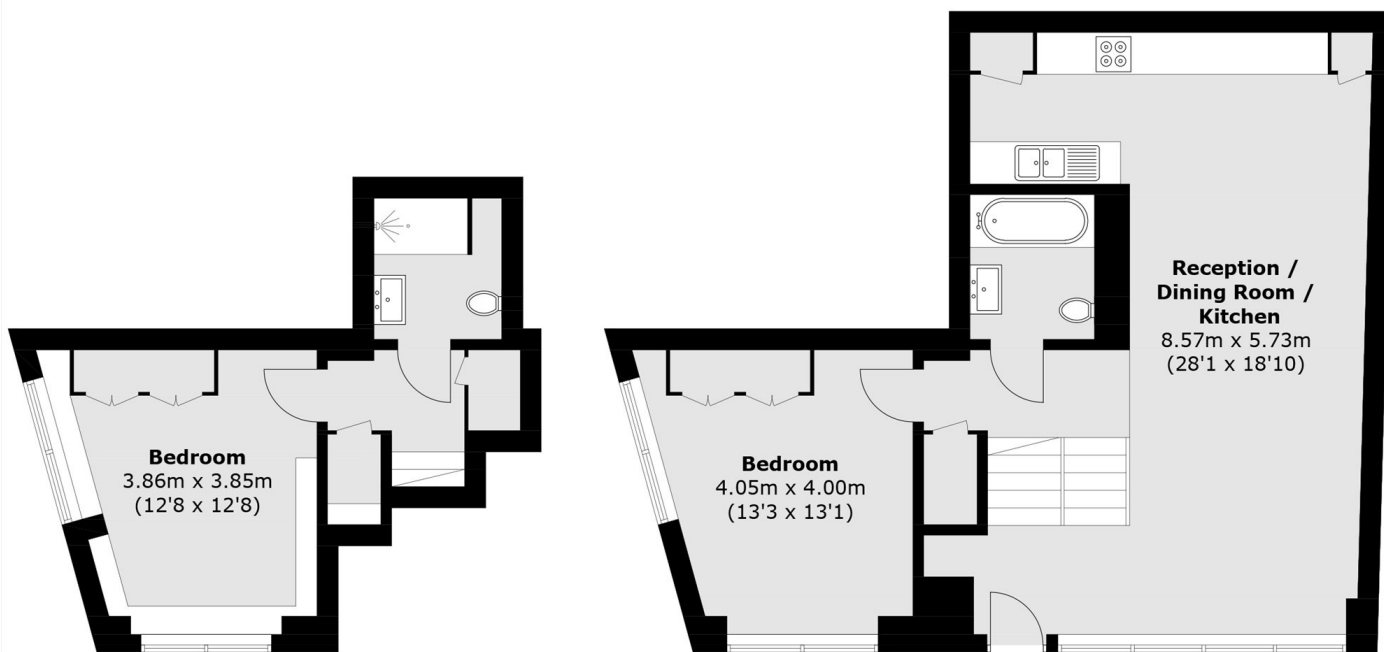
A wonderful two bedroom, two bathroom split-level warehouse style apartment of generous proportions with its own front door and underfloor heating throughout.

Crabtree Hall is located adjacent to the River Thames just a short walk from popular local riverside amenities as well as the leafy Bishops Park. Local transport links are nearby. There are a variety of shops, restaurants, bars and pubs nearby including the River Café, Sam's Brasserie, Brasserie Blanc and the Crabtree gastro pub, as well as the recently renovated Riverside Studios which boasts a cinema, two theatres, art gallery, restaurant and bar.

### Features

- Two Bedrooms
- Two Bathrooms
- Private Entrance
- Split-Level
- Close to the River Thames
- No Onward Chain

# Rainville Road, London, W6



**Lower Ground Floor**

**Ground Floor**

Total area (approx.): 88.8 sq. m (955.9 sq. ft)