



Montagu Mews North, W1H

£6,283 Per calendar month

A recently redecorated mews house arranged over two floors, with a semi open-plan kitchen/reception room, three bedrooms and two bathrooms.

Montagu Mews North is situated between Crawford Street and Montagu Place, close to Marylebone High Street and Baker Street Underground station.

Features

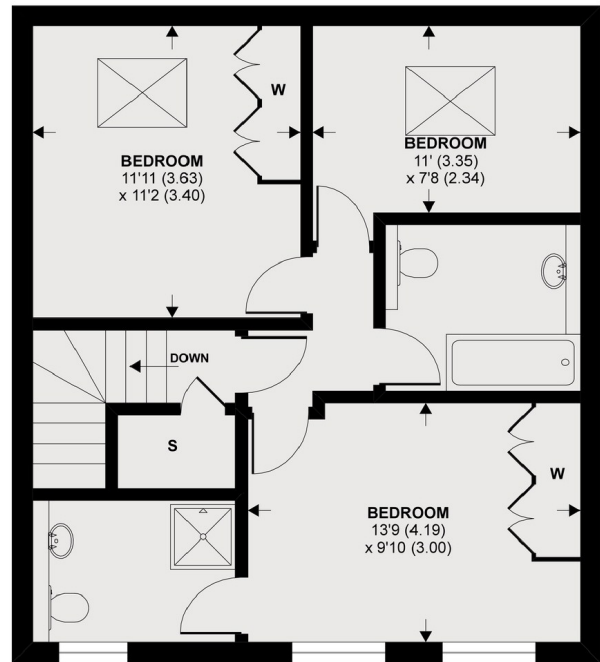
- Pretty Cobbled Mews
- Open Plan
- Three Bedrooms
- Two Bathrooms
- Unfurnished
- The Portman Estate

Montagu Mews North, London, W1H

Denotes restricted
head height



Ground Floor



1st Floor

APPROX FLOOR AREA 1140 SQ.FT 105.9 SQ.M
Copyright nichecom.co.uk 2020 REF : 582745