

BARTON FLEMING

INDEPENDENT ESTATE AGENTS



Flat 1, 4 Causeway, Bicester, Oxfordshire. OX26 6AW

BARTON FLEMING

INDEPENDENT ESTATE AGENTS

Web: www.bartonfleming.co.uk
E-mail: info@bartonfleming.co.uk
62 North Street, Bicester. OX26 6NF

Tel: Bicester (01869)

249922

Flat 1, 4 Causeway, Bicester, Oxfordshire. OX26 6AW



A Two Bedroom Maisonette situated in the Town Centre with Hall, Kitchen, Lounge Diner and Bathroom and an Allocated Parking Space.

LEASEHOLD (215 years from 29/09/1979)

£ 230,000

- ❖ Entrance Hall
- ❖ Kitchen
- ❖ Bathroom
- ❖ Living Room
- ❖ Two Bedrooms
- ❖ Town Centre Location
- ❖ Gas to Radiator Central Heating
- ❖ Close to all Local Amenities
- ❖ Walking Distance to Both Train Stations and Bicester Village

BARTON FLEMING

INDEPENDENT ESTATE AGENTS

Web: www.bartonfleming.co.uk
E-mail: info@bartonfleming.co.uk
62 North Street, Bicester. OX26 6NF

Tel: Bicester (01869)

249922

Leasehold Details:

Freeholder: Wheatley Properties Limited/
Eros Properties Limited

Lease Term: 215 years from 29/09/1979
Management Company: Tobin Jones Block
Management.

Management Fees: £1,074.43 per annum
(current charge from 10/25 – 09/26).

First Floor (Above shop):

Part-glazed security front door to:

ENTRANCE:

Plain plaster ceiling, access to loft space,
airing cupboard, Oak solid wood flooring.

KITCHEN: 9'9 x 11'4 shortening to 8'8 shortening to 5'9.

Side aspect PVC window, plain plaster
ceiling, RCD/MCB electricity consumer
unit, wall mounted "Worcester Greenstar
Ri" boiler, ceramic tiled floor, recess for
pair of fridge freezers. Range of base and
eye level units, roll edge worksurface, tiled
surrounds, 600mm base unit with fitted
stainless steel and glass fan oven/grill, 4-
ring electric stainless steel hob, stainless
steel extractor fan, 1000mm corner base
unit with 500mm door, 500mm cutlery and
pan drawer, 1000mm undersink base unit
with two 500mm doors, wine rack, second
1000mm corner base unit with 500mm
door, 300mm base unit, space for washing
machine.

BATHROOM: 7'6 x 6'8.

Plain plaster ceiling, extractor fan, radiator,
polished floor tiles, panel enclosed
enamelled metal bath, "Triton T80" electric
shower over, sliding head support, wash
hand basin, dual flush close coupled WC.

LOUNGE DINER: 19'1 shortening to 16'2 x 9'10.

Side aspect PVC window, plain plaster
ceiling, downlighting, Oak solid wood
flooring, two radiators, central heating
thermostat.

BEDROOM ONE: 13'9 x 8'9.

Side aspect PVC window, plain plaster
ceiling, coving, built-in wardrobe, radiator.

BEDROOM TWO: 9'6 widening to 12'2 x 8'9.

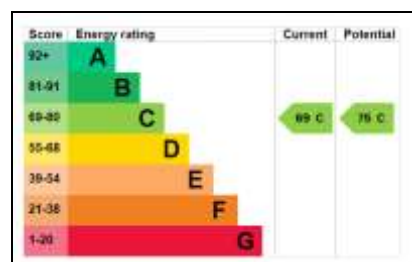
Side aspect PVC window, plain plaster
ceiling, coving, wardrobe recess, radiator.

Parking:

The flat has one allocated parking space, as
indicated by the Land Registry plan on
page 7 of this brochure.

Key Facts for Buyers:

EPC: Rating of C (69).



Council Tax: Band A

Approx. £1,741 per annum.

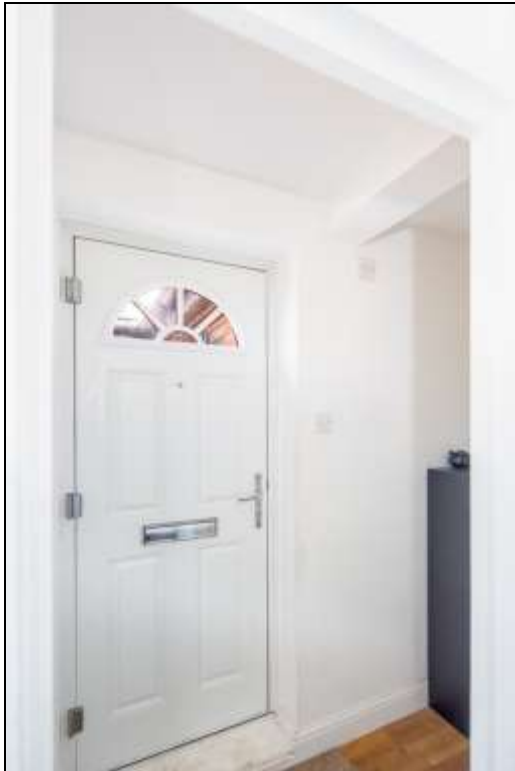
BARTON FLEMING

INDEPENDENT ESTATE AGENTS

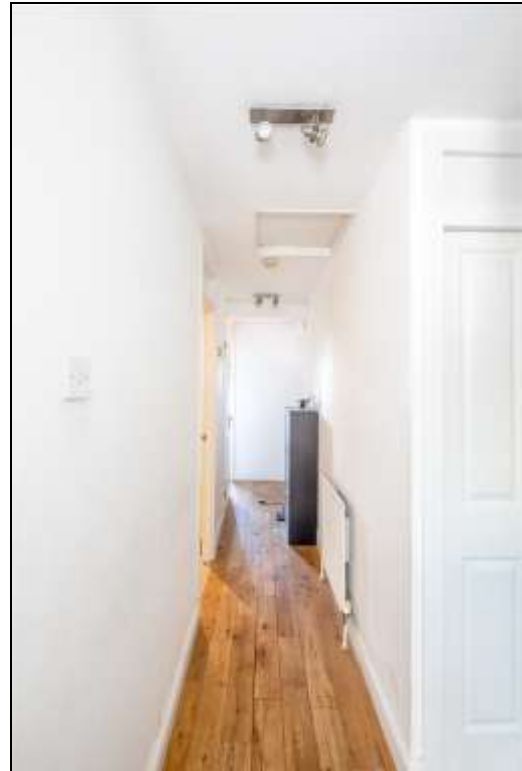
Web: www.bartonfleming.co.uk
E-mail: info@bartonfleming.co.uk
62 North Street, Bicester. OX26 6NF

Tel: Bicester (01869)

249922



Entrance Hall



Entrance Hall



Bathroom



Bathroom

BARTON FLEMING

INDEPENDENT ESTATE AGENTS

Web: www.bartonfleming.co.uk
E-mail: info@bartonfleming.co.uk
62 North Street, Bicester. OX26 6NF

Tel: Bicester (01869)

249922



Kitchen



Kitchen



Kitchen



Lounge Diner



Lounge Diner

BARTON FLEMING

INDEPENDENT ESTATE AGENTS

Web: www.bartonfleming.co.uk
E-mail: info@bartonfleming.co.uk
62 North Street, Bicester. OX26 6NF

Tel: Bicester (01869)

249922



Bedroom One



Bedroom One



Bedroom Two



Bedroom Two



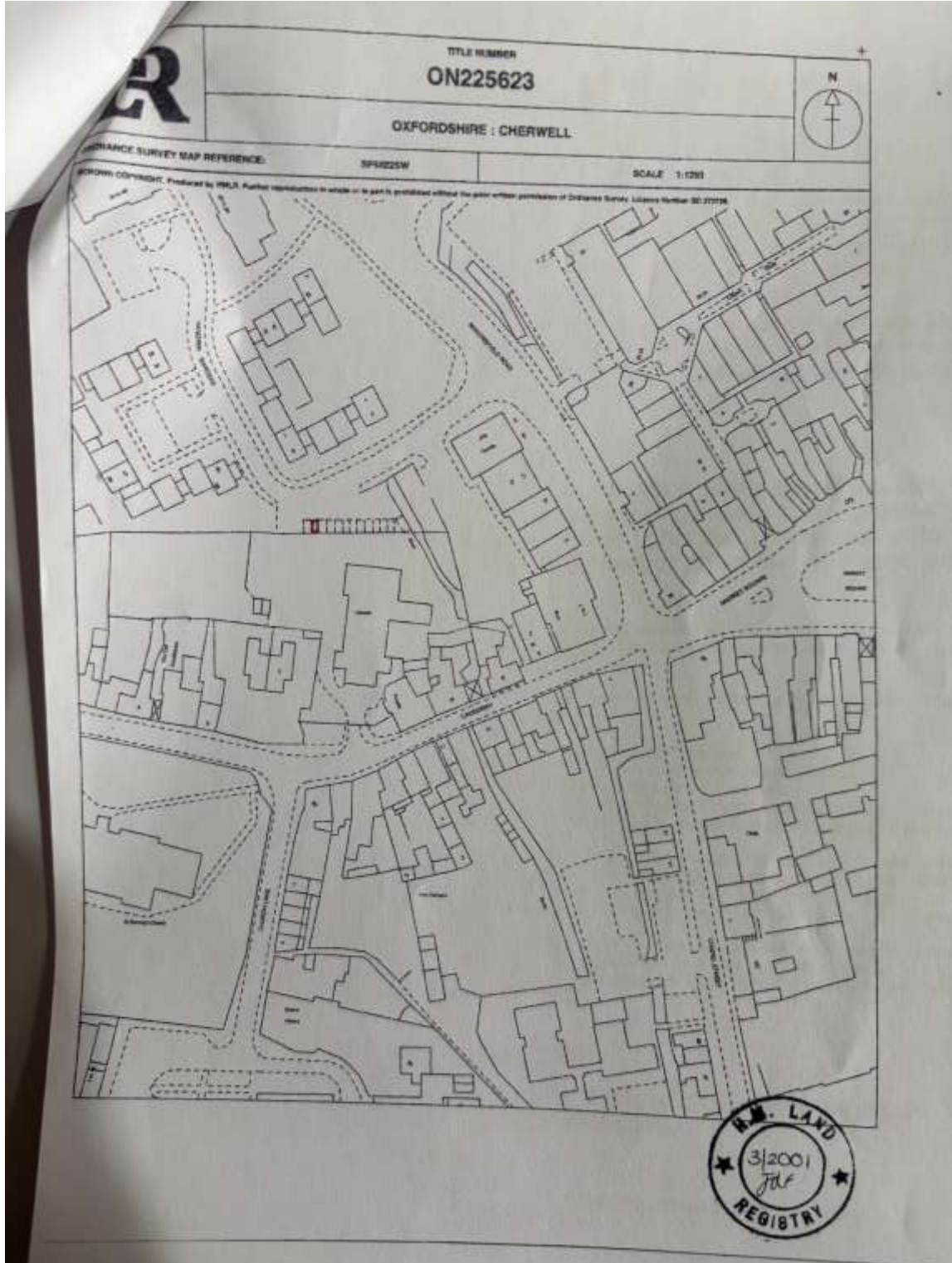
BARTON FLEMING

INDEPENDENT ESTATE AGENTS

Web: www.bartonfleming.co.uk
E-mail: info@bartonfleming.co.uk
62 North Street, Bicester. OX26 6NF

Tel: Bicester (01869)

249922



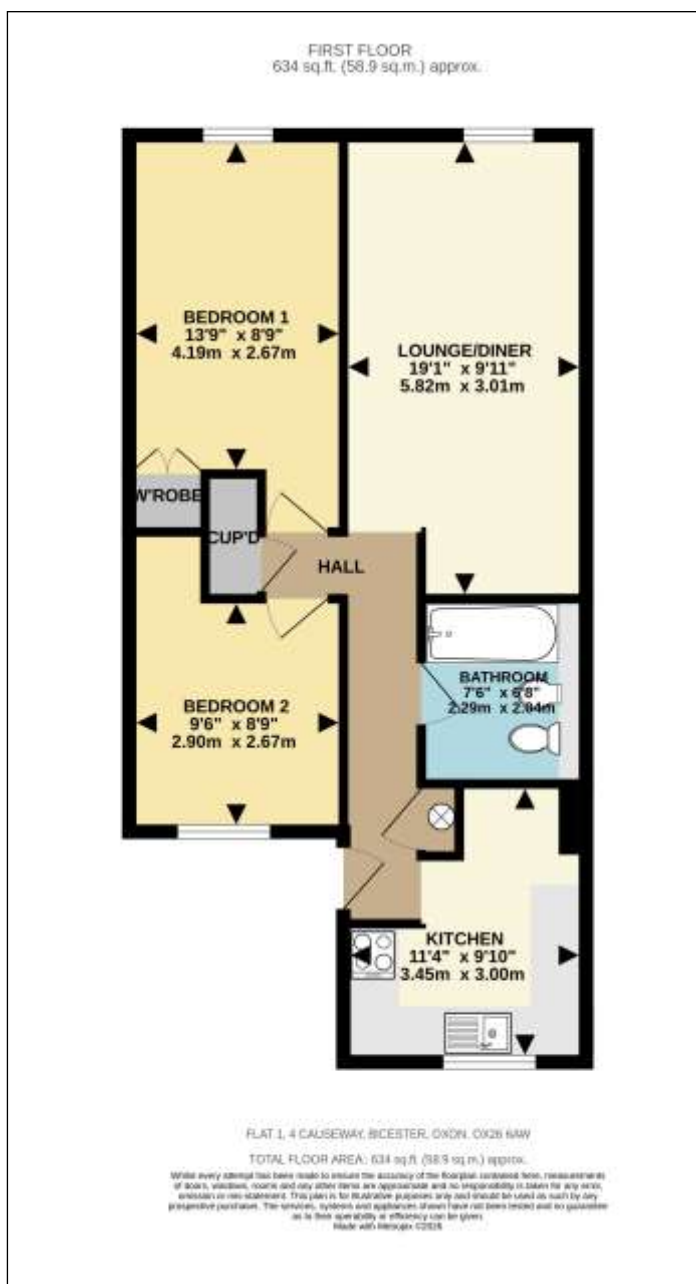
BARTON FLEMING

INDEPENDENT ESTATE AGENTS

Web: www.bartonfleming.co.uk
E-mail: info@bartonfleming.co.uk
62 North Street, Bicester. OX26 6NF

Tel: Bicester (01869)

249922



These particulars do not constitute any part of an offer or a contract. Whilst every care has been taken to ensure accuracy, no responsibility for errors or mis-description is accepted. Any intending purchaser must satisfy himself by inspection or otherwise as to the correctness of each of the statements in these particulars. The vendor does not make or give and neither Barton Fleming nor any person in their employment, has authority to make or give any representation or warranty whatsoever in relation to this property. Land Registry Plans are provided as guidance only and while LRP documents are generated from what is registered at the point at when the plans are downloaded for use in these particulars they are not guaranteed to represent the property title at any given moment. Buyers should satisfy themselves through their solicitor as to the accuracy of the land registration at any given moment.