

FLETCHERS

ESTATE AGENTS



Blythe Road, W14

£600,000

****OFFERS IN EXCESS OF**** A spacious, well presented, two bedroom garden flat situated in the heart of Brook Green. Arranged laterally, the flat offers over 780sqft of living space and comprises of an open plan kitchen/reception with integrated appliances, plenty of natural light and opens out on a large private garden. The property boasts a spacious primary double bedroom with built in storage and en-suite bathroom. The property benefits from a second bedroom and family bathroom with plenty of storage through the apartment.

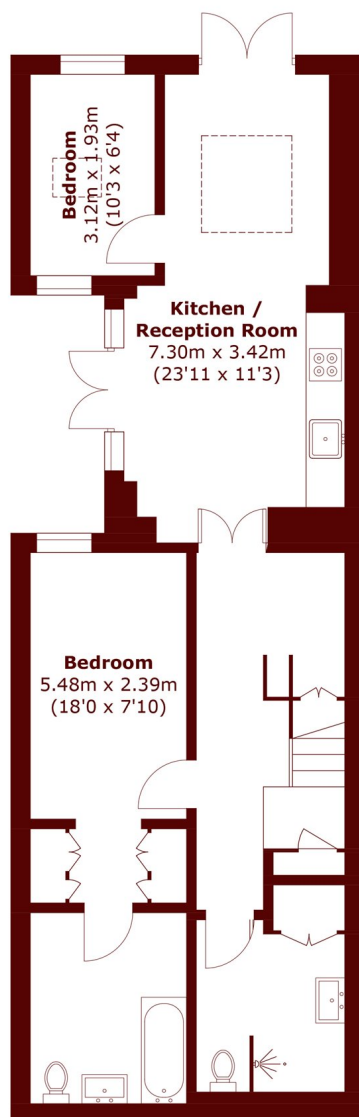
The flat is offered to the market with no onward chain and would make for a wonderful home or pied de terre.

Blythe Road is renowned locally for its excellent independent restaurants and eclectic boutiques and is within easy reach of the world-renowned amenities of Westfield London, Holland Park and Kensington High Street. The flat is also under a mile from Shepherd's Bush station (Central and Overground Lines) offering access in and out of the city. It is superbly positioned for easy access to the green open spaces of both Brook Green & Holland Park.

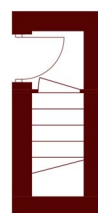
• Two Bedrooms • Lower Ground Floor • Private Garden and Courtyard • Elegant Finish • Brook Green • Open Plan Living •

FLETCHERS

ESTATE AGENTS



Lower Ground Floor



Ground Floor

Total area (approx.): 72.7 sq. m (782.5 sq. ft)

Fletchers Brook Green Sales
144 Shepherds Bush Road, Hammersmith, London, W6 7PB
020 7603 1415
brookgreensales@fletcherestates.com

Energy Rating: C. We aim to make our particulars both accurate and reliable. However they are not guaranteed; nor do they form part of an offer or contract. If you require clarification on any points then please contact us, especially if you're traveling some distance to view. Please note that appliances and heating systems have not been tested and therefore no warranties can be given as to their good working order.