



OAKFIELD



Eastport Lane, Lewes
Price Guide £1,000,000



SUMMARY

A rare opportunity to own a beautifully modernised, double-fronted period home in one of Lewes' most desirable settings—nestled on a peaceful lane with views over the stunning Southover Grange Gardens.

This five-bedroom detached house blends elegant character with thoughtful, high-quality upgrades, making it the perfect retreat for families or professionals seeking space, style, and location.

From the moment you step inside, the home's charm is evident—original sash windows, stripped wood floors, and feature fireplaces set a warm, timeless tone.

The accommodation is spacious and versatile, with two elegant reception rooms including a light-filled family room with French doors to the garden and a welcoming sitting room with bespoke cabinetry and beautiful period detailing.

The heart of the home is the superb hand-built Shaker-style kitchen, crafted by local specialists Woodworks of Lewes. It features honed granite surfaces, underfloor heating, a Rayburn stove, an additional Siemens hob and Miele appliances, all complemented by tasteful Fired Earth flooring and thoughtful storage.

The adjoining dining space makes it ideal for both family meals and entertaining.

Upstairs, the five generous double bedrooms span two floors,



some offering idyllic views of Southover Grange and Lewes Castle.

The master bedroom includes built-in wardrobes and a striking period fireplace, while others offer charming original features, integrated storage, and serene outlooks.

A stylish family bathroom and modern downstairs shower room/utility space provide everyday convenience, alongside a peaceful study perfect for home working.

Outside, the walled garden is a true sanctuary—paved and lawned with mature planting, a built-in seating area with direct southerly aspect and a beautiful flint wall backdrop.

A detached workshop offers excellent potential as a creative studio or hobby space, complete with power, lighting, and a skylight.



Sitting Room

15'9 x 11'4

Dining Room

15'10 x 11'6

Kitchen

9'3 x 5'9

Family Room

22'0 x 10'4

Workshop

13'1 x 7'10

Bedroom

16'5 x 11'3

Bedroom

11'2 x 10'11

Bedroom

11'3 x 9'5

Study

10'4 x 5'5

Bedroom

15'10 x 11'2

Bedroom

13'2 x 10'11

Council Tax Band - G £4,379 per annum















INFORMATION

Tenure

Freehold

Local Authority

Lewes District Council

Council Tax Band

G

Opening Hours

Monday to Friday 9.00am - 5.30pm
Saturday 9.00am - 4.00pm

Viewings

Please contact us on 01273 474101 if you wish to arrange a viewing appointment for this property or require further information.

Area Map



Floorplan

Eastport Lane, Lewes, BN7 1TL

Approximate Gross Internal Area = 163.6 sq m / 1761 sq ft
 Outbuilding = 8.7 sq m / 94 sq ft
 Total = 172.3 sq m / 1855 sq ft

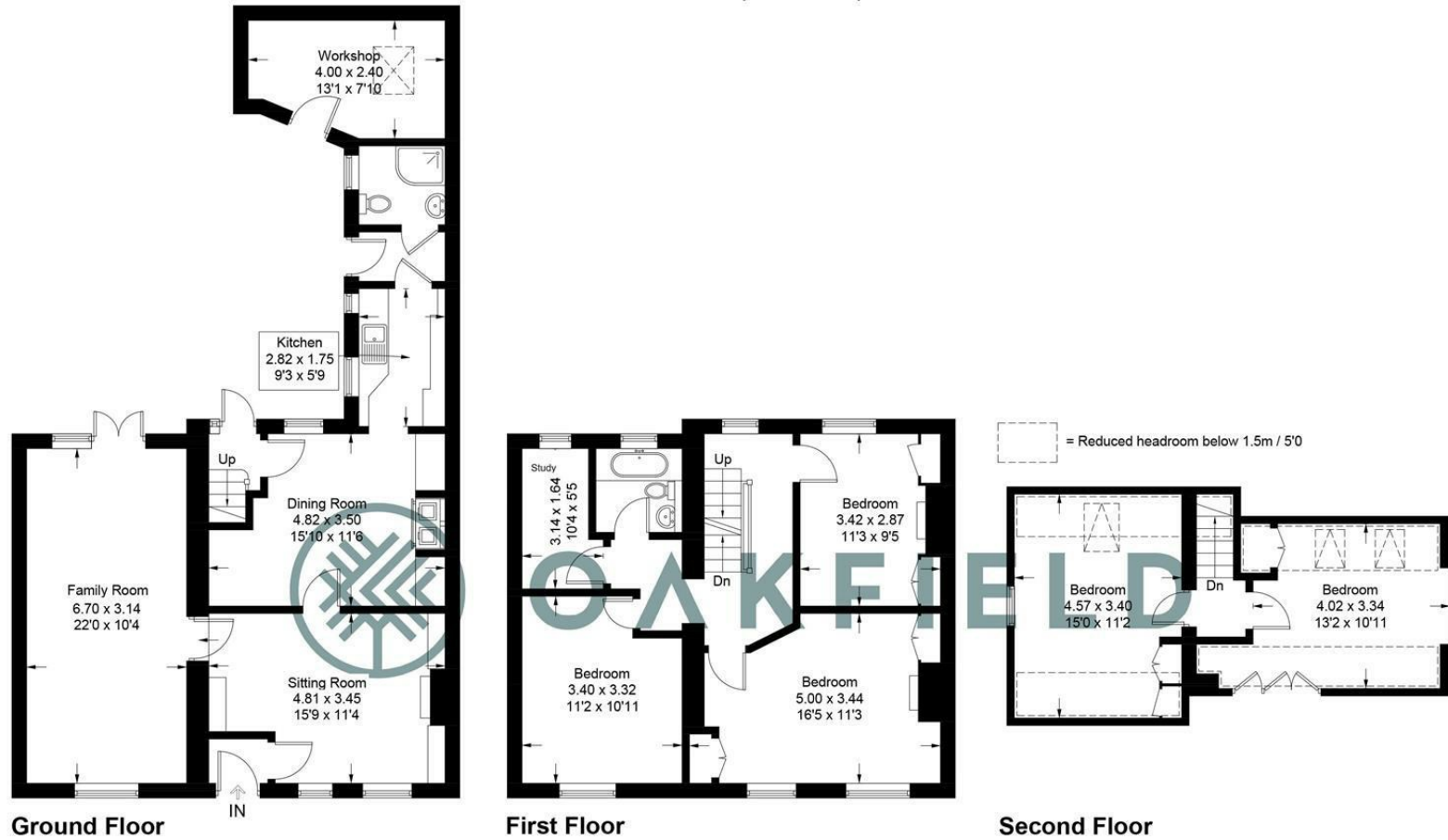
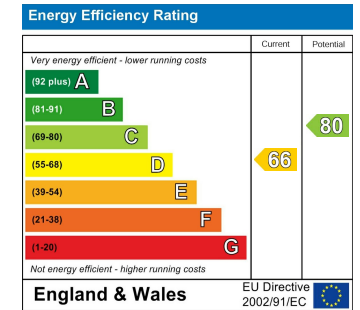


Illustration for identification purposes only, measurements are approximate, not to scale.
 Imageplansurveys @ 2025

Energy Efficiency Graph



These particulars, whilst believed to be accurate are set out as a general outline only for guidance and do not constitute any part of an offer or contract. Intending purchasers should not rely on them as statements of representation of fact, but must satisfy themselves by inspection or otherwise as to their accuracy. No person in this firm's employment has the authority to make or give any representation or warranty in respect of the property.