



Earl's Court Square, SW5

£1,038 Per week

A spacious and bright two bedroom two bathroom flat located on the first floor with the double reception room and balcony overlooking the sought after Earl's Court Square. The building also benefits from a lift.

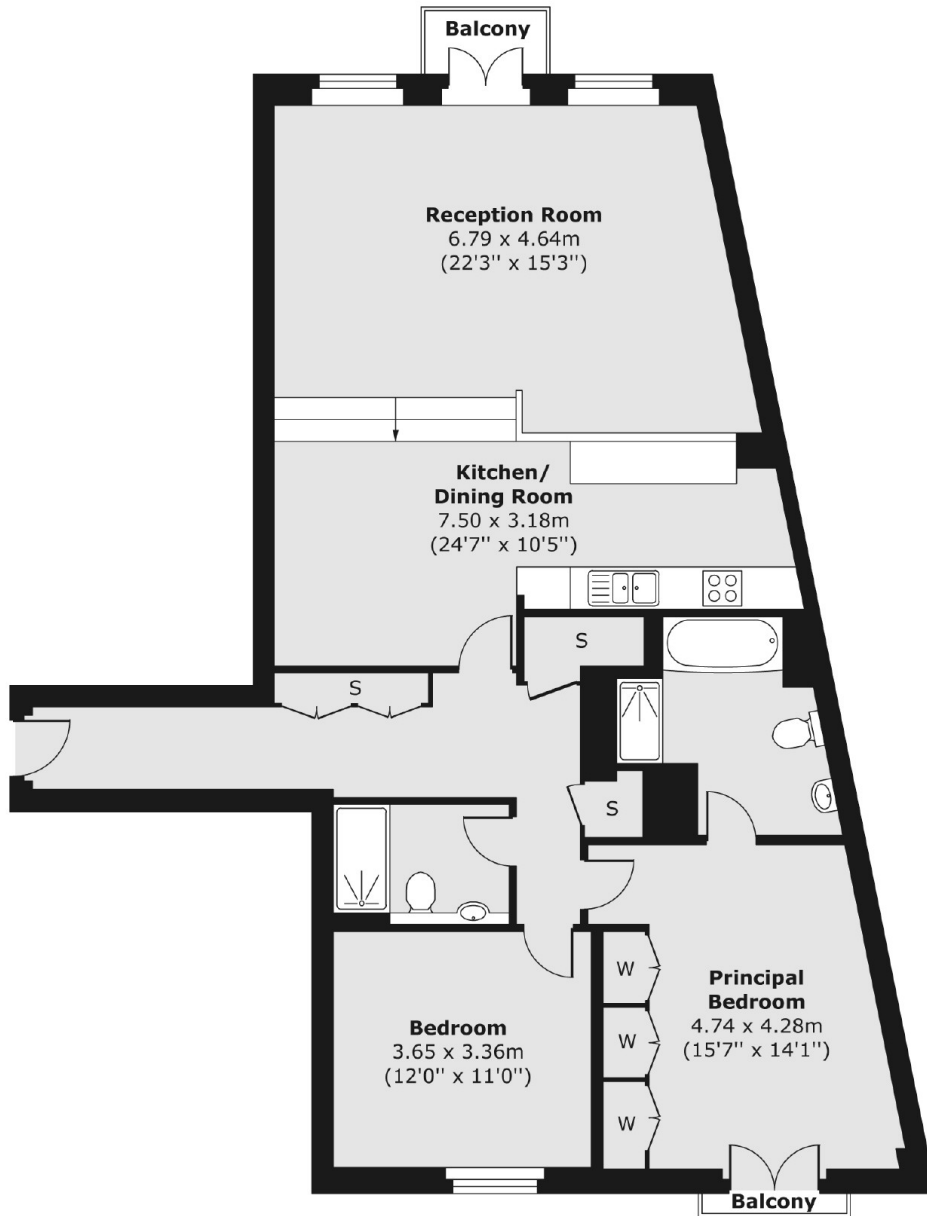
Earl's Court Square is conveniently located between Earl's Court Road and Warwick Road and provides an array of shops, restaurants and bars within close proximity. The nearest Underground Station is Earl's Court and provides great transport links into central London.

Features

- Two Bedrooms
- Two Bathrooms
- Spacious
- Natural Light
- Lift Access
- Double Reception Room

Earl's Court Square, London, SW5

Fourth Floor



Total area (approx.) 113.04 sq. m (1,217 sq. ft)
Balcony area (approx.) 2.12 sq. m (23 sq. ft)

Dexters

Earl's Court
3 Hogarth Place
London
SW5 0QT
Lettings
020 7370 3030

Energy Rating: . We aim to make our particulars both accurate and reliable. However they are not guaranteed; nor do they form part of an offer or contract. If you require clarification on any points then please contact us, especially if you're traveling some distance to view. Please note that appliances and heating systems have not been tested and therefore no warranties can be given as to their good working order.

 **RICS** | Regulated
Estate Agent
and Letting Agent

dexters.co.uk