



Prime House, 10 Banister Road, Kensal Rise W10

London

£625,000



Prime House, 10 Banister Road

Kensal Rise, London W10

Superb two bed / two bath apartment with balcony and lovely communal gardens.
Council Tax band: D

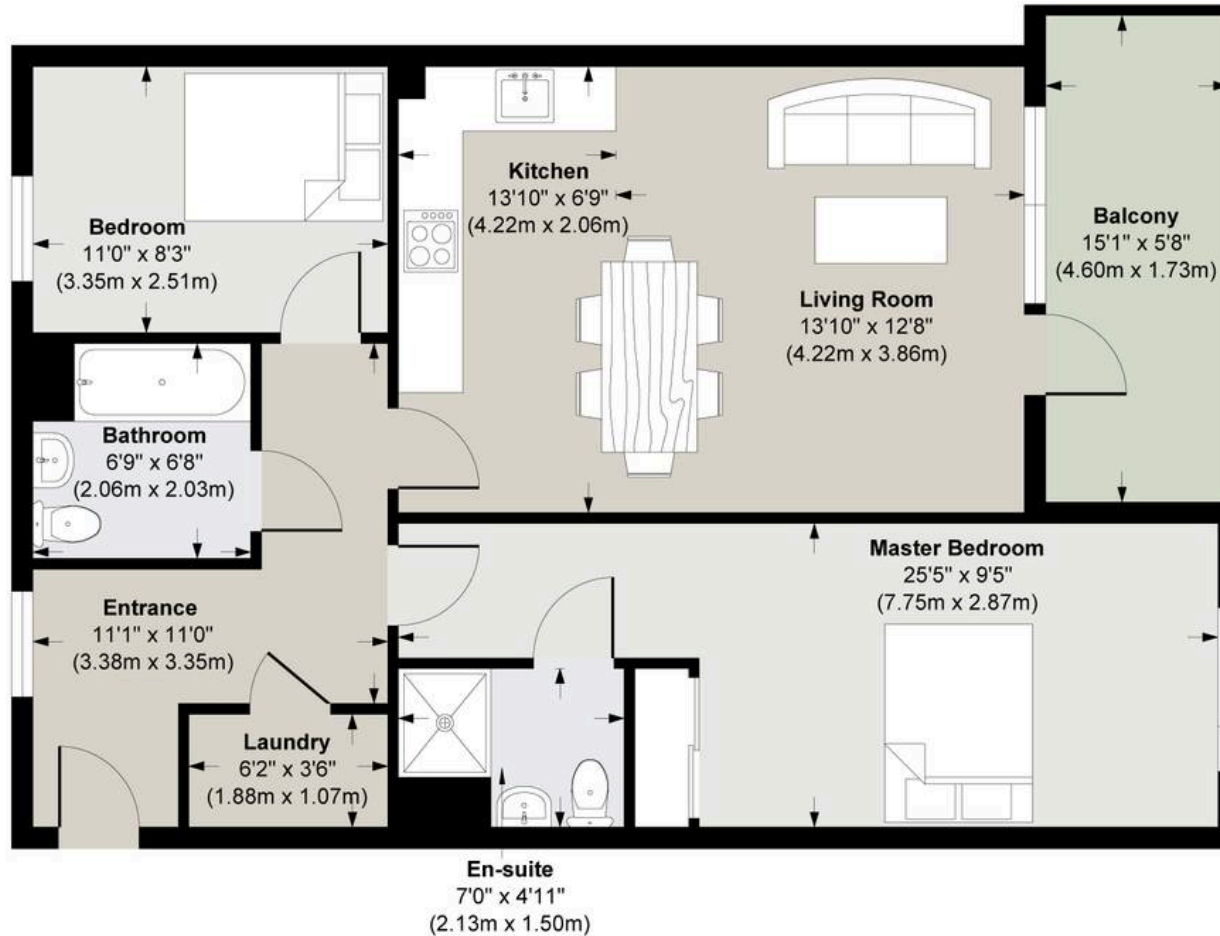
Tenure: Leasehold

EPC Energy Efficiency Rating: C

EPC Environmental Impact Rating: C



Prime House, 10 Banister Road, W10 4BH



Floor Plan
Approximate Floor Area
791.80 sq. ft
(73.56 sq. m)

This floor plan was produced for Garrison Estates by Visual Imagery. Website:
www.visualimagery.co.uk

While we strive for accuracy in all our floor plans, please note that measurements of doors, windows, and rooms are approximate. Visual Imagery accepts no liability for any errors, omissions, or inaccuracies presented. These plans are intended for illustrative purposes only and should be used as such by any prospective purchaser or lessee. No guarantee is given regarding the gross internal floor area quoted on this plan, and any figures provided should be considered initial estimates only



Garrison Estates

20 College Parade, Salusbury Road, Queens Park - NW6 6RN

020 4511 4820 • contact@garrisonestates.co.uk • www.garrisonestates.co.uk/