



Shillingford Close, Mill Hill, NW7

£385,000

A wonderfully kept and modern two-bedroom, two-bathroom apartment extending to approximately 769 sq ft, offering bright, well-balanced accommodation within a peaceful residential close.

The property features a generous reception room providing an excellent living and entertaining space, complemented by a spacious kitchen finished in a clean, contemporary style with ample storage and workspace.

The principal bedroom benefits from an en-suite bathroom, while a second well-proportioned bedroom is served by a separate modern bathroom, creating a practical layout ideal for couples, sharers, or those working from home.

Presented in excellent condition throughout, the apartment offers a true move-in-ready opportunity.

Further benefits include, allocated parking, west facing reception room and the property is conveniently located for local amenities, green spaces, and transport links, making this a highly appealing NW7 address. Sole Agent.

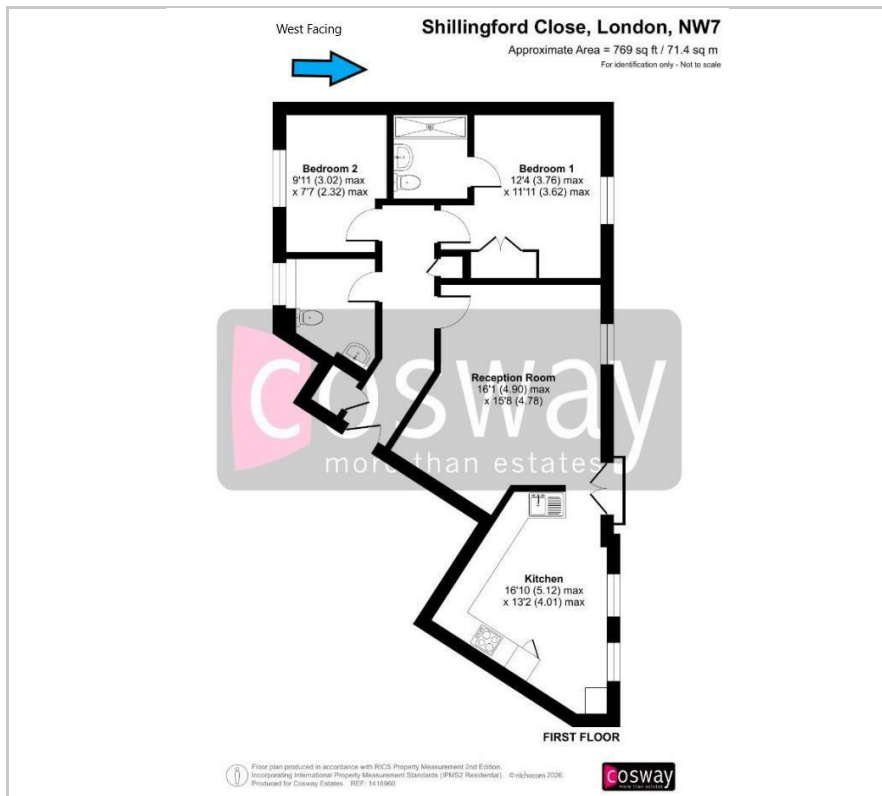
Viewing

Please contact our Mill Hill Office on 02089590011 if you wish to arrange a viewing appointment for this property or require further information.

- Lidbury Square Development
- Modern interior finish
- Two Bedroom - Two Bathroom Apartment
- West Facing
- Spacious Reception Room
- Contemporary kitchen
- Quiet residential close
- Stones Throw From Mill Hill East Station
- Sole Agent - Chain Free
- Allocated Parking



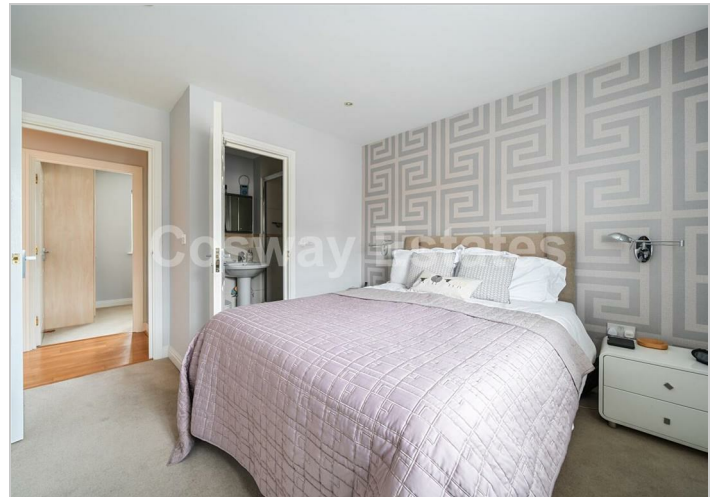
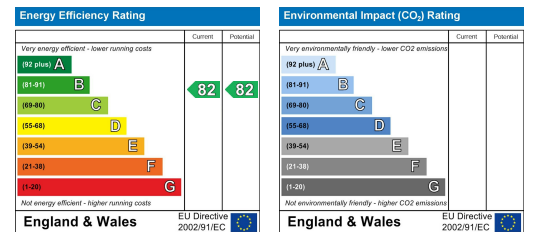
Floor Plan



Area Map



Energy Efficiency Graph



These particulars, whilst believed to be accurate are set out as a general outline only for guidance and do not constitute any part of an offer or contract. Intending purchasers should not rely on them as statements of representation of fact, but must satisfy themselves by inspection or otherwise as to their accuracy. No person in this firm's employment has the authority to make or give any representation or warranty in respect of the property.