



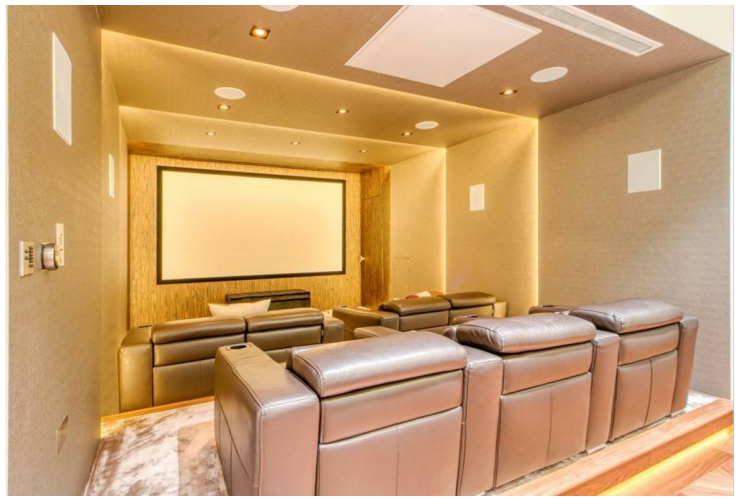
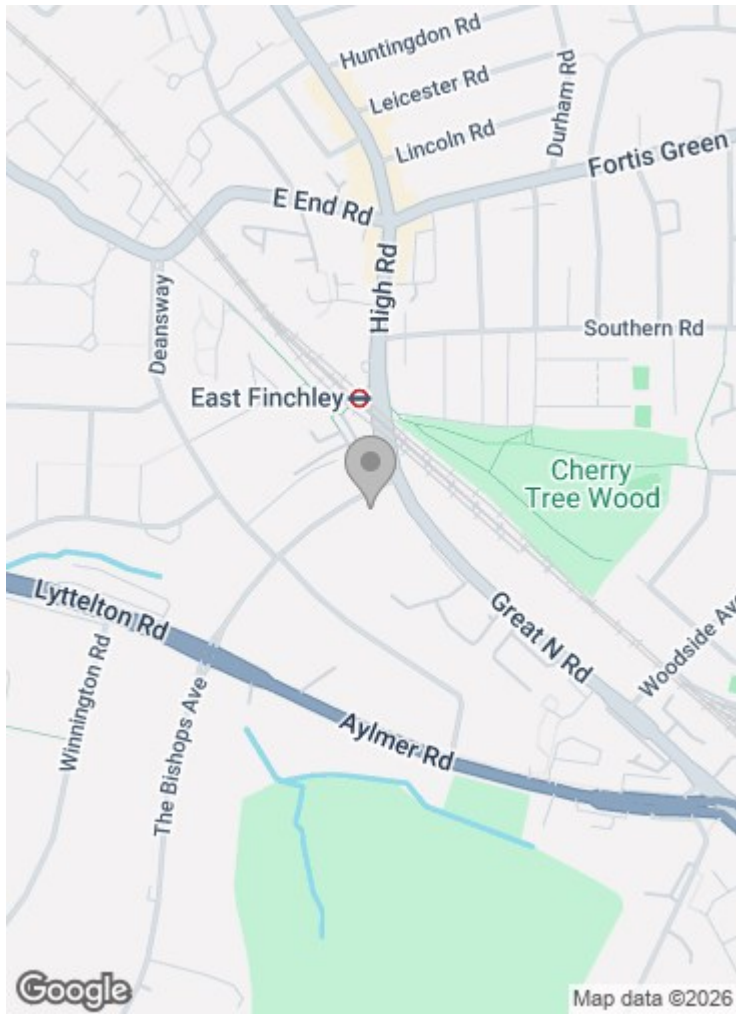
The Bishops Avenue Hampstead N2 0AP

£6,000 per week

An understated yet beautifully appointed family house of approximately 7093 sq. ft (659 sq. m) located on this ever popular and prestigious road known as 'Millionaires Row'. This delightful, detached, character house is set well back from the road behind security gates with an exterior that belies the plush interior within. The upper floors provide a spacious reception room, dining room, family room and luxury kitchen with 5 spacious bedrooms, four bathrooms and a dressing to the first and second floors. The lower ground leisure complex includes a magnificent indoor swimming pool with separate spa, a games room, cinema room, refrigerated wine store, sauna, steam room and gymnasium. The rear garden is fully landscaped with a large entertaining area to the rear with professional barbeque and cooking facilities.

Other benefits include off street parking for 4-5 cars, full alarm system and easy access to the shopping and transport amenities of East Finchley High Road as well to Kenwood and Hampstead Heath.

Closest tube station is Hampstead (Northern line).



Important notice: These particulars are issued for guidance only. They are intended to give a fair overall description of the property and do not constitute a warranty of any kind or to be an offer or contract in whole or in part. Nothing in these particular shall be deemed to constitute a representation that the property is in good structural condition nor that any services, appliances, equipment or facilities are in good working order. Notwithstanding that all information contained in these particulars, both in the text and in any plans and photographs is given in good faith, intending purchasers should make their own enquiries as to the accuracy of all matters upon which they intend to rely. Measurements are given for guidance only.

85 - 87 BAYHAM STREET
LONDON NW1 0AG

45 CIRCUS ROAD
LONDON NW8 9JH

T: +44 0207 1234 152
info@phillipsharrod.com

