



Langley Avenue, KT6

£724,950

A stunning four-bedroom maisonette with private entrance, garden & parking. This exceptional four-bedroom maisonette offers the rare combination of space, style and privacy, with its own front door, expansive layout and a beautifully secluded private garden. Further benefits include two parking spaces, with one at the front and a private garage to the rear a rare and valuable addition in this location.

The property is conveniently located for Surbiton station, providing fast links to London Waterloo, as well as a selection of well-regarded schools, the famous Maple Road Farmers Market and a variety of local shops, cafes and everyday amenities.

Features

- Period Conversion
- Over 1600SqFt
- Private Garden
- Off Street Parking
- Garage
- Central Location



Langley Avenue, KT6

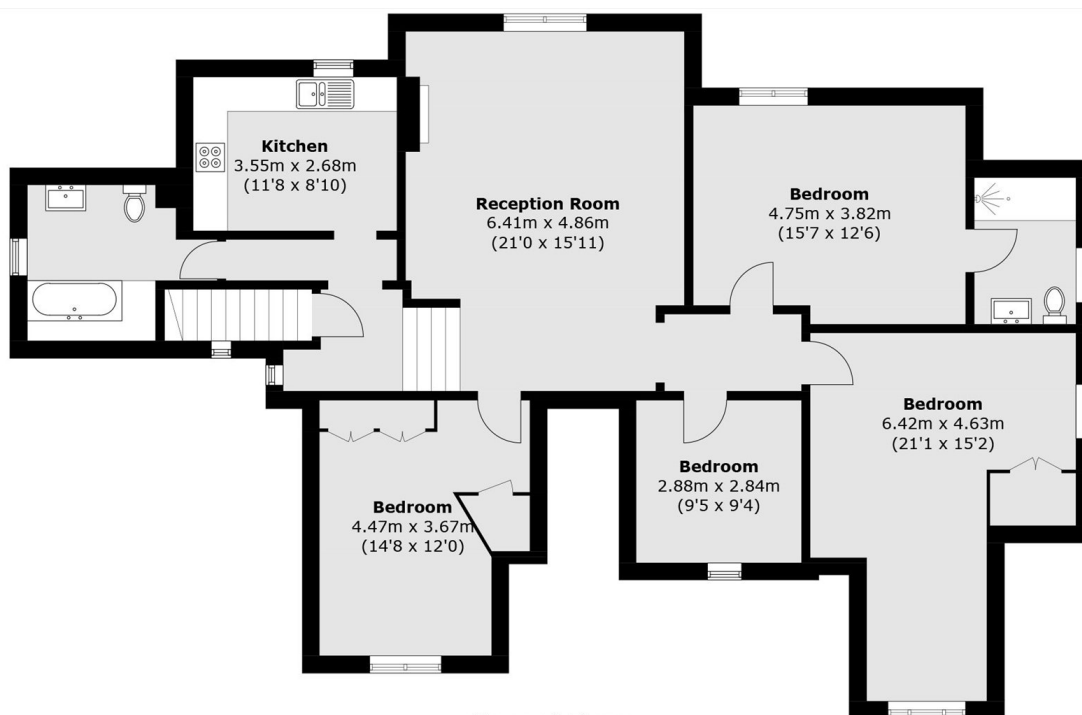
Set within an attractive period property, the home feels much more like a house than an apartment. The standout reception room is bright, wide and flooded with natural light, creating a fantastic open space for both everyday living and entertaining..

All four bedrooms are doubles, offering flexibility for families, guests or home working. The property also benefits from two modern bathrooms, including a sleek walk-in shower and a separate family bathroom with a full-sized bath.

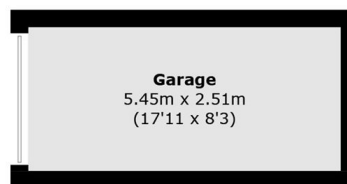
The contemporary kitchen is finished to a high standard, complemented by tasteful interiors throughout and charming period touches that add character and warmth. A unique opportunity to secure a spacious, characterful home in a prime Surbiton setting.



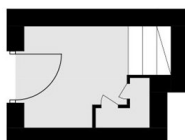
Langley Avenue, Surbiton, KT6



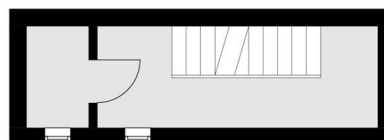
Second Floor



**(Not Shown In Actual
Location / Orientation)**



Ground Floor



First Floor

Total area (approx.): 146.5 sq. m (1,576.9 sq. ft)
Garage: 13.7 sq. m (147.5 sq. ft)