



**JAMES  
ANDERSON**



## TO LET

Cowley Road, Mortlake, SW14

## £2,850 Per Month

Per Month

Bright and spacious three-bedroom apartment located on a leafy residential road in Mortlake.

This well-presented property features a generous living room, a modern kitchen/dining area with direct access to a shared garden, a spacious principal bedroom, two further double bedrooms, and a stylish family bathroom. Ideally situated just a short walk from the mainline train station, the apartment is also within the catchment area for highly regarded local schools.



Three Bedrooms



Modern Bathroom



Bright Reception Room



Modern Kitchen



EPC E | Council Tax E



Barnes Bridge Station



River Thames



Shared Garden



On-Street Parking



Deposit £3,288.46 | £657.69 Holding Deposit

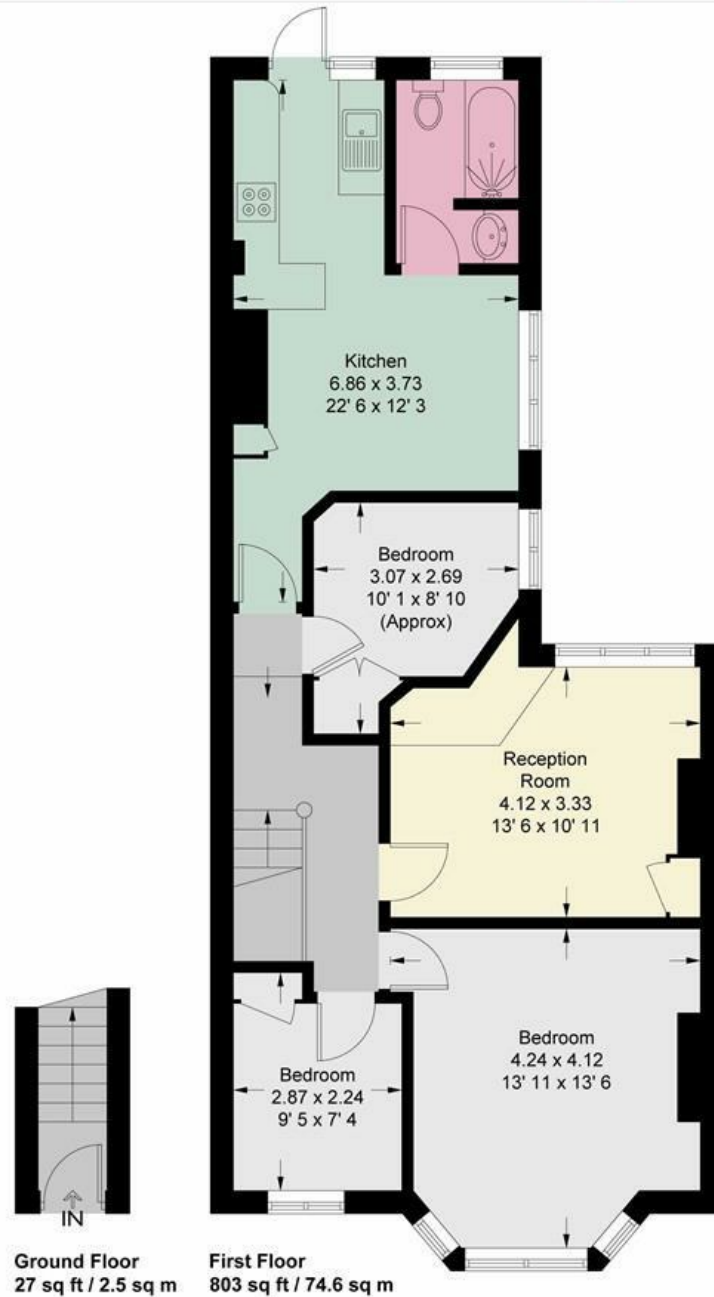


OPEN 7 DAYS A WEEK • Weekdays until 9pm • Weekends until 5pm

0208 878 8688

# Cowley Road

Approximate Gross Internal Area = 830 sq ft / 77.1 sq m



This plan is not to scale and must be used as layout guidance only. All measurements and areas are approximate and should not be relied upon to provide accurate information. This plan must not be relied upon when making property valuations, design considerations or any other such relevant decisions. We accept no responsibility or liability (whether in contract, tort or otherwise) in relation to any loss whatsoever arising from or in connection with any use of this plan or the adequacy, accuracy or completeness of it or any information within it.



| Energy Efficiency Rating                    |                         | Current | Potential |
|---|-------------------------|---------|-----------|
| Very energy efficient - lower running costs |                         |         |           |
| (92 plus) <b>A</b>                          |                         |         |           |
| (81-91) <b>B</b>                            |                         |         |           |
| (69-80) <b>C</b>                            |                         |         |           |
| (55-68) <b>D</b>                            |                         |         |           |
| (39-54) <b>E</b>                            |                         |         |           |
| (21-38) <b>F</b>                            |                         |         |           |
| (1-20) <b>G</b>                             |                         |         |           |
| Not energy efficient - higher running costs |                         |         |           |
| <b>England &amp; Wales</b>                  | EU Directive 2002/91/EC | 52      | 72        |

| Environmental Impact (CO <sub>2</sub> ) Rating                  |                         | Current | Potential |
|---|-------------------------|---------|-----------|
| Very environmentally friendly - lower CO <sub>2</sub> emissions |                         |         |           |
| (92 plus) <b>A</b>  |                         |         |           |
| (81-91) <b>B</b>  |                         |         |           |
| (69-80) <b>C</b>  |                         |         |           |
| (55-68) <b>D</b>  |                         |         |           |
| (39-54) <b>E</b>  |                         |         |           |
| (21-38) <b>F</b>  |                         |         |           |
| (1-20) <b>G</b>   |                         |         |           |
| Not environmentally friendly - higher CO <sub>2</sub> emissions |                         |         |           |
| <b>England &amp; Wales</b>                                      | EU Directive 2002/91/EC |         |           |

