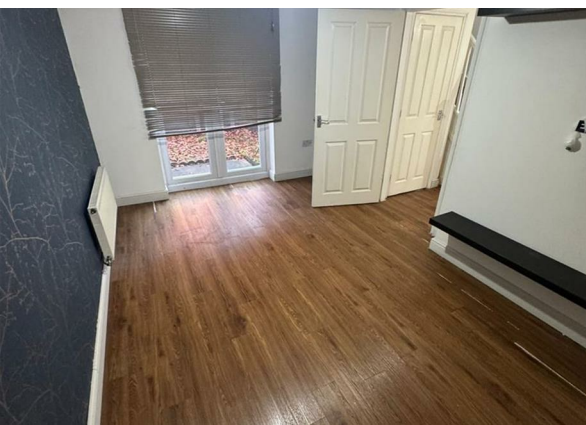
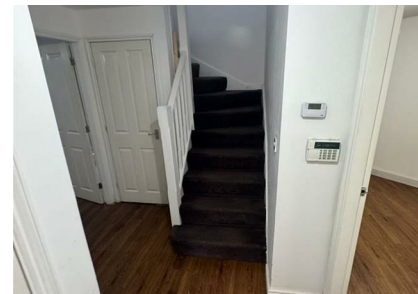


Sandering Drive, Manchester, M8 8YT

£1,449 Per Month

Council Tax Band:



*** 3 BEDROOM SEMI-DETACHED HOUSE TO LET IN M8 ***

Nestled in the charming area of Sanderling Drive, Manchester, this delightful three-bedroom house offers a perfect blend of modern living and comfort. Built in 2005, the property spans an impressive 990 square feet, providing ample space for families or professionals seeking a welcoming home.

Upon entering, you are greeted by a well-appointed reception room, ideal for both relaxation and entertaining guests. The layout of the house is thoughtfully designed, ensuring a seamless flow between the living spaces. The three bedrooms are generously sized, offering plenty of room for personalisation and comfort, making it an excellent choice for families or those looking to create a serene retreat.

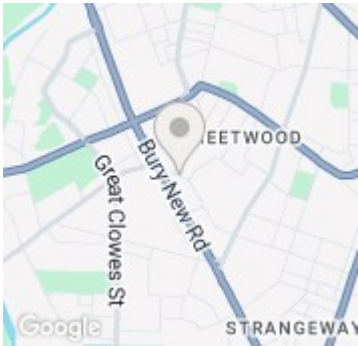
The property features a well-equipped bathroom, designed with functionality in mind, catering to the needs of everyday life. The contemporary design and modern amenities throughout the house ensure that it meets the demands of modern living while maintaining a warm and inviting atmosphere.

Situated in a desirable location, this home benefits from easy access to local amenities, schools, and transport links, making it an ideal choice for those who value convenience and community. Contact us today to make this lovely property your next home.

Open House Estate Agents
61 Kingsway, Manchester M19 2LL
0161 225 6926



Open House South East Manchester



Energy Efficiency Rating		
	Current	Potential
Very energy efficient - lower running costs		
(92 plus) A	71	
(81-91) B		
(69-80) C		
(55-68) D		
(39-54) E		
(21-38) F		
(1-20) G		
Not energy efficient - higher running costs		
England & Wales		EU Directive 2002/91/EC
		