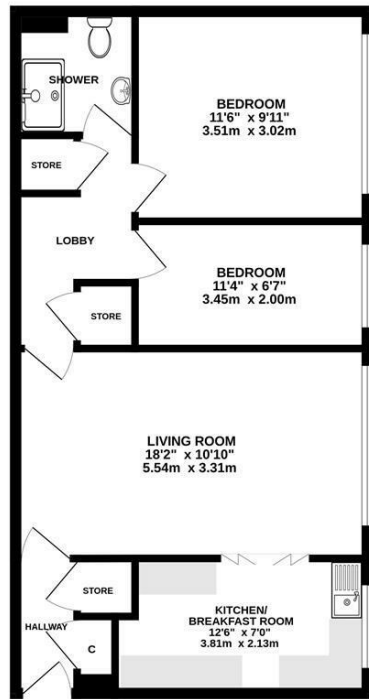




Keith
Ashton

Canterbury Way, Great Warley
Brentwood

GROUND FLOOR
636 sq.ft. (59.1 sq.m.) approx.



TOTAL FLOOR AREA: 636 sq.ft. (59.1 sq.m.) approx.
Measurements are approximate. Not to scale. Illustrative purposes only.
Made with Metropop ©2020



Flat 10 Becketts Court Canterbury Way, Great Warley, Brentwood, CM13 3BA

****CASH BUYERS ONLY**** We are pleased to bring to market this ground floor apartment, ideally located in the sought-after Warley area of Brentwood. Available with no onward chain, the property offers well-proportioned accommodation and presents an excellent opportunity for modernisation. The layout features a spacious lounge leading into the kitchen area, two bedrooms, a shower room, and ample built-in storage throughout.

Externally, the apartment further benefits from its own private garage and off-street parking. Situated less than a mile from Brentwood Station, the property provides superb transport links into London and beyond, while Brentwood High Street is also within easy reach. Combining comfort, practicality, and excellent connectivity, this home is ideal for first-time buyers, investors, or those seeking a well-connected location.

£190,000

SERVICES:

Local Authority: Brentwood
Council tax band: C
Post code: CM13 3BA

VIEWING:

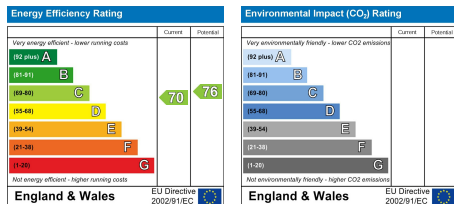
Strictly by prior arrangement with Keith Ashton Estate Agents

OPENING HOURS:

Monday to Friday: 8.45AM - 6.30PM | Saturdays: 9AM - 5.30PM | Sundays: 10AM - 2PM

MORTGAGE INFORMATION:

We offer the additional facility of an in-house Independent Financial Adviser who will access all mortgage lenders with the purpose of providing you with the benefit of choice. For quotations or comparables please call 01277 260858 or visit our interactive website at www.mortgagebusiness.net



We the Agent have not tested any apparatus, fittings or services for this property. The plot size is intended merely as a guide and has not been officially measured or verified by the Agent. Photographs are for illustration only and may depict items which are not for sale or included in the sale of the property. As part of the service we offer we may recommend ancillary services to you which we believe may help you with your property transaction. We wish to make you aware, that should you decide to use these services we will receive a referral fee. For full and detailed information please visit 'terms and conditions' on our website www.keithashton.co.uk

Brentwood
Tel. 01277 260858

Village Office
Tel. 01277 375757

Lettings Office
Tel. 01277 202200

Explore more @ www.keithashton.co.uk

