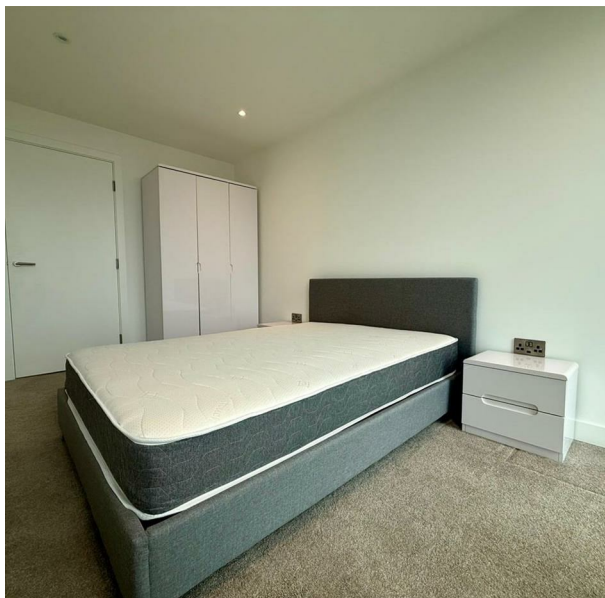


2412 141 Chester Road, Manchester, M15 4ZG  
£1,900 Per Month  
Council Tax Band: D



Situated on the 24th floor of the prestigious Elizabeth Tower, this exceptional two-bedroom, two-bathroom apartment offers stylish, fully furnished living with breathtaking south-facing views.

Finished to a high standard throughout, the property boasts a bright and spacious open-plan living and dining area, enhanced by floor-to-ceiling windows that flood the space with natural light and showcase stunning panoramic views. The modern kitchen is fully equipped with integrated appliances, making it ideal for both everyday living and entertaining.

Both bedrooms are generously sized doubles and benefit from built-in wardrobes, providing excellent storage. The principal bedroom also features a contemporary en-suite bathroom. A second sleek and modern



St Johns Court 19b Quay Street, Manchester, M3 3HN  
01616760099  
manchester@orlandoreid.co.uk  
<https://www.orlandoreid.co.uk/manchester/>

