



- A semi-detached bungalow located in a much sought after location
- The property does require general updating but is presented in clean and tidy order
- Lounge with picture window to front, night storage heating
- Kitchen breakfast room with larder cupboard and door to side drive
- Two double bedrooms and bathroom with shower over bath
- Private drive, garage and south facing garden to rear



"A mature semi-detached bungalow with a sunny garden to rear, plenty of private parking and garage, general updating required throughout".

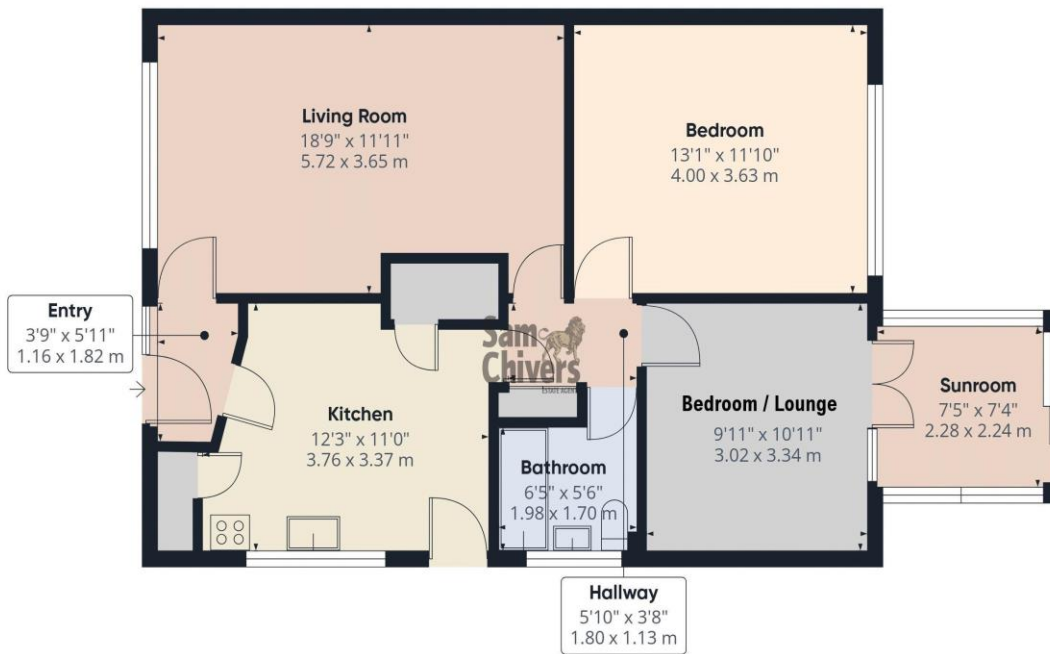
Offered for sale with no onward chain.

The accommodation comprises sheltered front door into entrance lobby with doors to lounge and kitchen. Lounge with picture window to front. Kitchen dining room with a range of units, larder cupboard and door to side drive. There are two double bedrooms to rear, one of which is currently used as a second lounge with French door opening into a conservatory, opening in turn onto garden. The bathroom suite is original however in clean tidy order with shower over bath. Double glazing and night storage heating.

Outside to front is a level walled garden, to side a private drive leading to a garage. To the rear is a fully enclosed south facing garden. Side door from garden into garage. The garage has power and lighting,

Tenure: Freehold. **Council Tax Band:** C.





Floor 0 Building 1



Floor 0 Building 2

Approximate total area^m
950 ft²
88.1 m²

(1) Excluding balconies and terraces

Calculations reference the RICS IPMS 3C standard. Measurements are approximate and not to scale. This floor plan is intended for illustration only.

GIRAFFE360

Find us online!



www.samchiversproperty.co.uk



Facebook: Sam Chivers Estate Agents



Instagram: @samchiversestateagents

rightmove  Zoopla

Score	Energy rating	Current	Potential
92+	A		
81-91	B		
69-80	C		80 C
55-68	D		
39-54	E	52 E	
21-38	F		
1-20	G		

Sam Chivers Estate Agents can also provide mortgage and conveyancing recommendations should you require such a service. Please contact our office on:

01761 411020 or email us at sales@samchiversproperty.co.uk

These sales particulars provide an approximate guide and form no part of a contract. It is the purchaser's responsibility to satisfy themselves that the property has been accurately described and that all fixtures and apparatus are functioning correctly. Your home may be at risk if you do not keep up repayments secured against it.