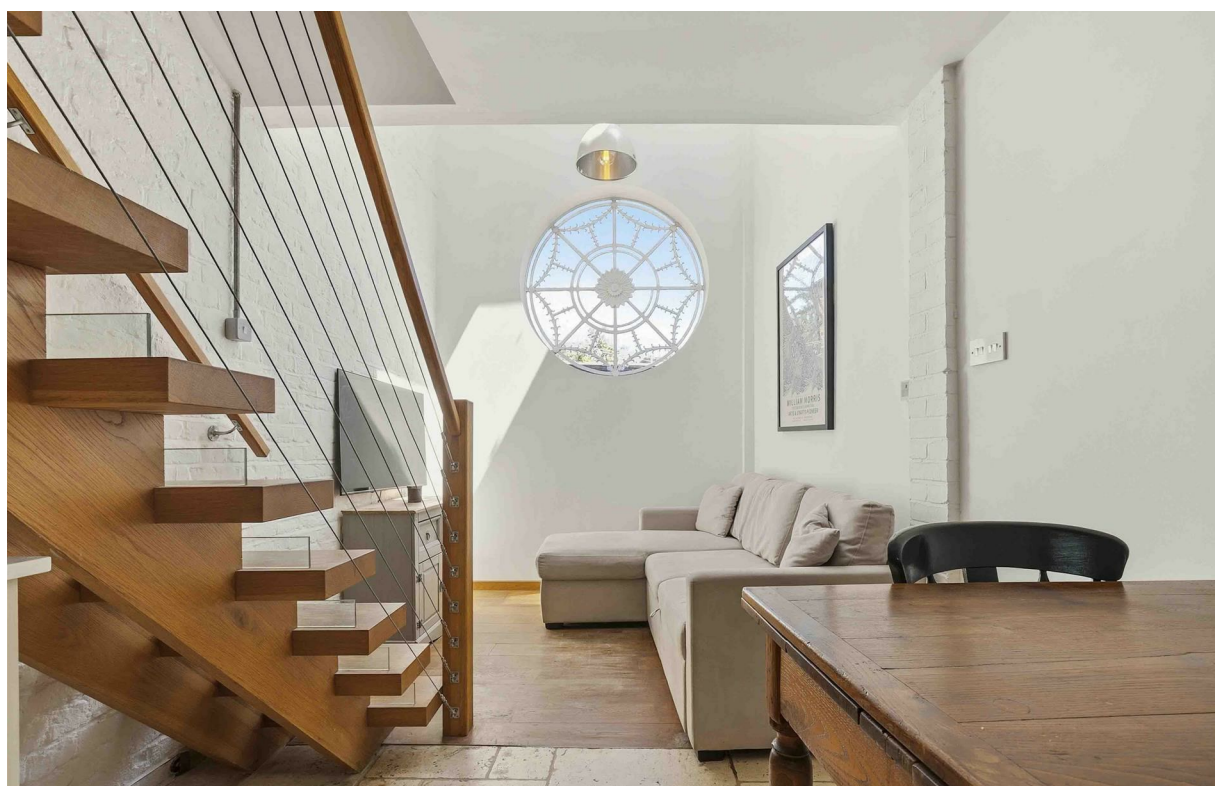


Gilstead Road

£2,750 Per Month

BRIK



Gilstead Road

£2,750 Per
Month

2 BED
House - End Terrace

0000
SQ FT

0000
SQ M

This stylish property is a one of a kind in the area. The impressive internal design has created almost 600 sq ft of living. There is a generous open plan kitchen/reception with under-floor heating, a beautifully crafted bespoke staircase and a stunning feature window bringing plenty of light. The ground floor also offers one of the two bedrooms and a modern ensuite shower room. On the first floor is a separate W.C and a further bedroom, with fitted storage, an ensuite bath area, and stable doors opening onto a flat roof area.

The property is situated on Gilstead Road a short walk from Fulham Broadway, Parsons Green and Imperial Wharf stations. Gilstead Road benefits from the shops, bars and restaurants of Wandsworth Bridge Road, the green spaces of South Park and Eel Brook Common as well as the nearby Sainsburys superstore and Harbour club.

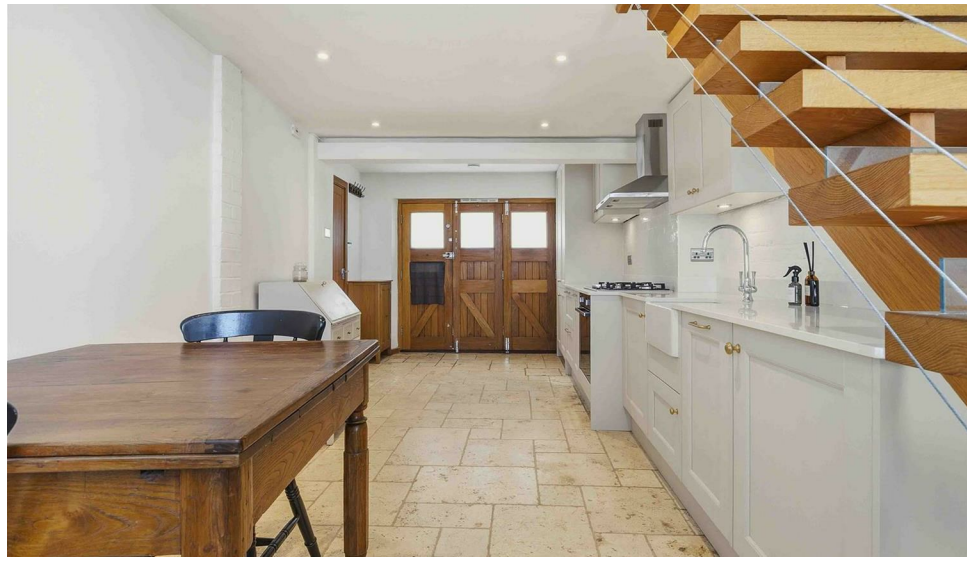
EPC rating - C

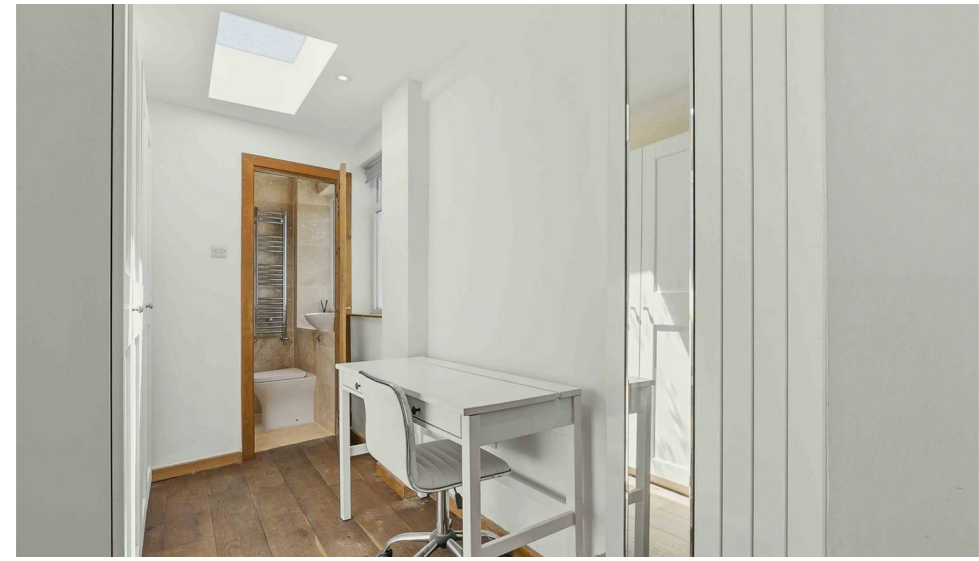
- 2 bedrooms
- Shower room
- Reception space
- Brand new kitchen and bathrooms
- Open plan living
- Quiet location
- Furnished
- Available 29th June 2026

JAMES SIMS

020 7384 6790

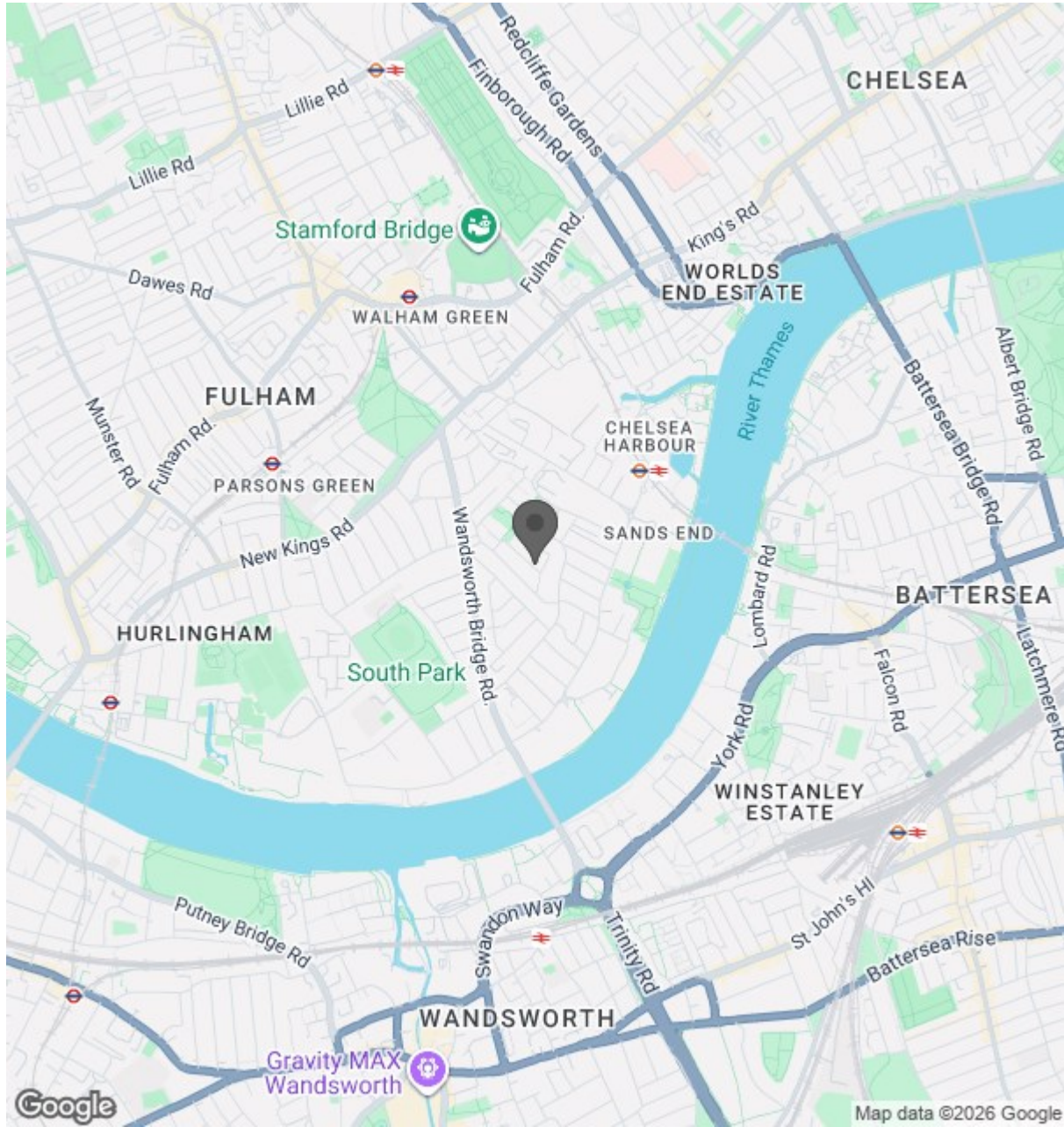
james@brik.co.uk







Location

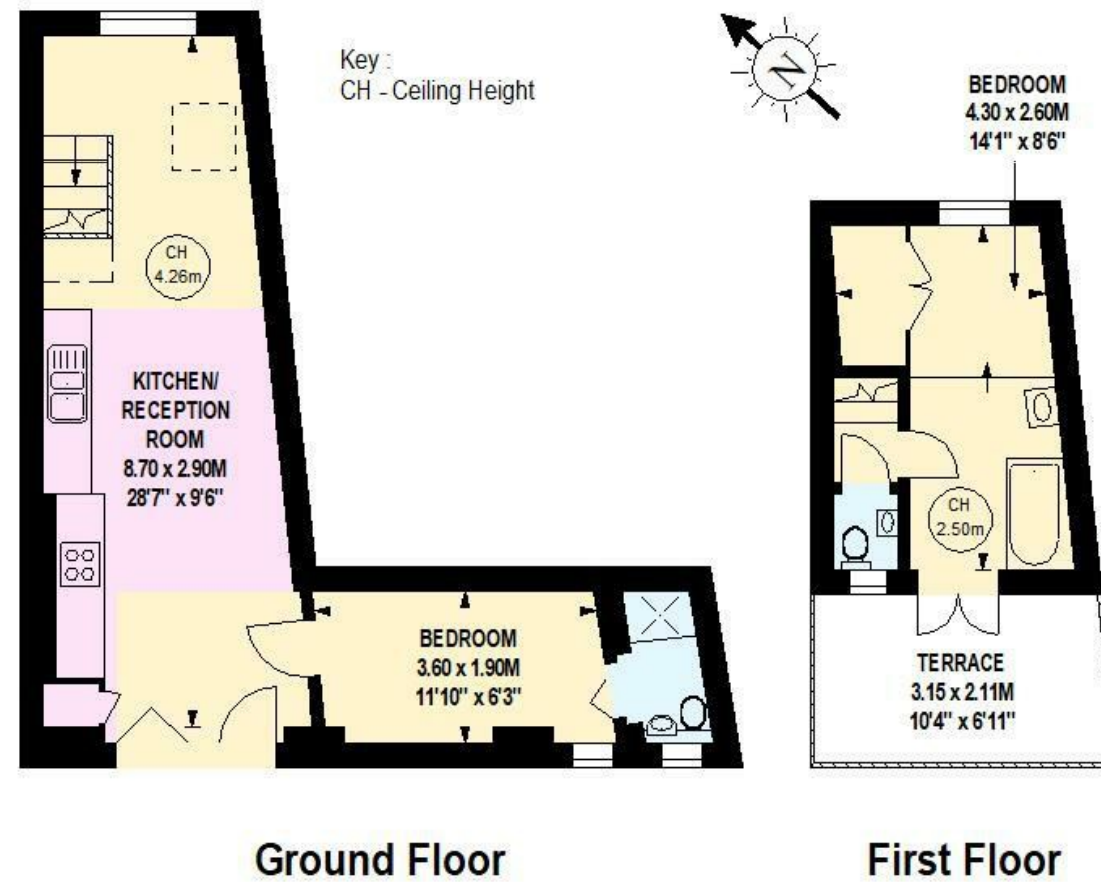


BRIK

0000
SQ FT

0000
SQ M

Gilstead Road, SW6
Approximate gross internal area
51.93 sq m / 559 sq ft



Although every attempt has been made to ensure accuracy, all measurements are approximate.
This floorplan is for illustrative purposes only and not to scale.
Measured in accordance with RICS standards.