



Maximus Way, Eastfield, Scarborough YO11 3XL

- Semi Detached Home
- Master bedroom with en suite
- Three Bedrooms
- Off Road Parking
- Modern Kitchen
- Family bathroom
- Garden with sockets
- Overlooks Roman settlement

Asking Price £230,000



Maximus Way, Eastfield, Scarborough YO11 3XL

DESCRIPTION

Nestled in the charming area of Eastfield, Scarborough, this delightful home on Maximus Way offers a perfect blend of comfort, space and modern convenience. Thoughtfully arranged over three floors, the property provides an ideal layout for families, professionals or those simply seeking extra room to grow.

Upon entering, you are welcomed into a hallway that leads through to a spacious living room, creating a warm and inviting atmosphere for relaxing or entertaining. From here, French doors open directly onto a decked area, providing a seamless indoor–outdoor flow and a perfect spot for morning coffee or al fresco dining. The ground floor also features a modern, well-equipped kitchen and a convenient WC.

Ascending to the first floor, you will find two well-proportioned bedrooms along with a dedicated office—an excellent addition for remote working, studying or use as a dressing room. A contemporary family bathroom is also located on this level, serving the household with ease.

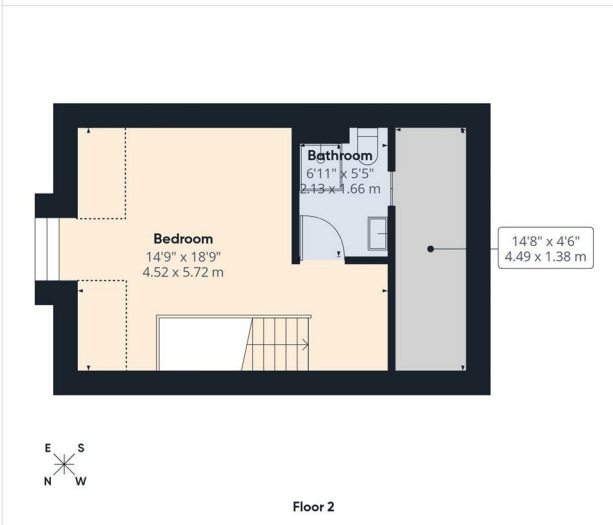
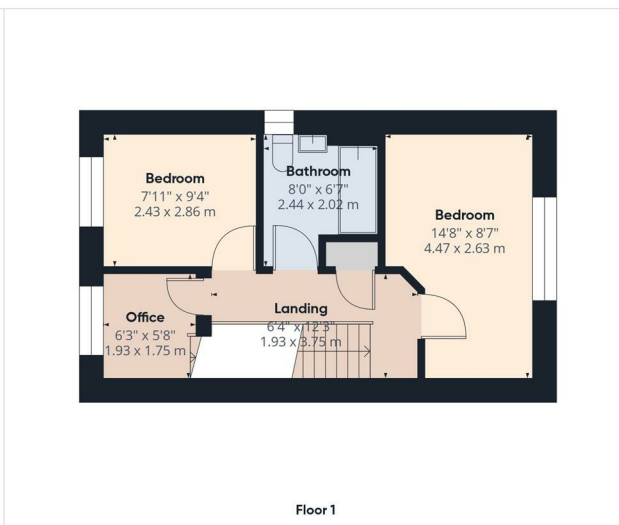
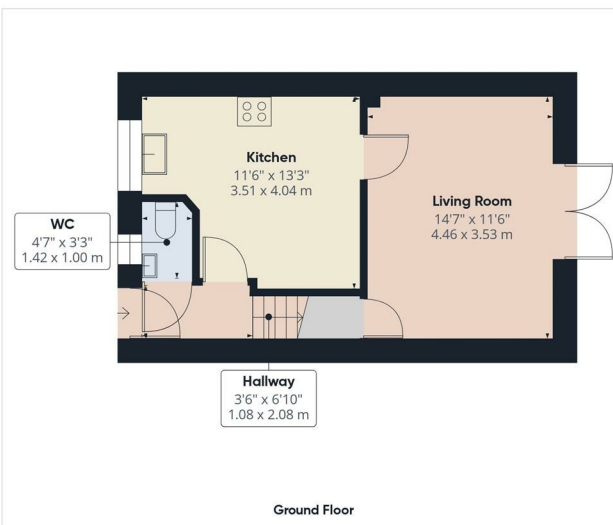
The impressive main bedroom occupies the entire top floor, offering a generous and private retreat complete with its own bathroom for added comfort. From the rear of the property, you can also enjoy a picturesque outlook toward the historic Roman settlement, providing a unique and charming backdrop.

Externally, the home benefits from a lovely south-facing garden, ideal for outdoor dining, relaxing or play throughout the sunnier months. The garden design, enhanced by the decked area from the living room, creates a versatile and inviting outdoor space. There is also parking for two cars, ensuring convenience for everyday living.

This well-designed home provides flexible accommodation across each level, set within a friendly and well-connected community close to local amenities, schools and transport links. Don't miss the chance to make this charming property your new home.







HUNTERS
HERE TO GET *you* THERE

Approximate total area⁽¹⁾
1009 ft²
93.8 m²

Reduced headroom
92 ft²
8.6 m²

(1) Excluding balconies and terraces

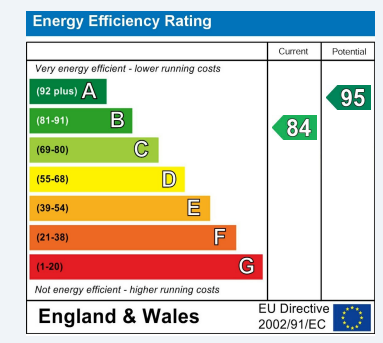
Reduced headroom
..... Below 5 ft/1.5 m

Calculations reference the RICS IPMS 3C standard. Measurements are approximate and not to scale. This floor plan is intended for illustration only.

GIRAFFE360

ENERGY PERFORMANCE CERTIFICATE

The energy efficiency rating is a measure of the overall efficacy of a home. The higher the rating the more energy efficient the home is and the lower the fuel bills will be.



These particulars are intended to give a fair and reliable description of the property but no responsibility for any inaccuracy or error can be accepted and do not constitute an offer or contract. We have not tested any services or appliances (including central heating if fitted) referred to in these particulars and the purchasers are advised to satisfy themselves as to the working order and condition. If a property is unoccupied at any time there may be reconnection charges for any switched off/disconnected or drained services or appliances - All measurements are approximate.

THINKING OF SELLING? If you are thinking of selling your home or just curious to discover the value of your property, Hunters would be pleased to provide free, no obligation sales and marketing advice. Even if your home is outside the area covered by our local offices we can arrange a Market Appraisal through our national network of Hunters estate agents.

Viewings

Please contact scarborough@hunters.com, if you wish to arrange a viewing appointment for this property or require further information.

Valuations

For a valuation of your property, please email the team with your property details, contact information and the times you are available.

