

## Judd Street, WC1H

£1,699 Per calendar month

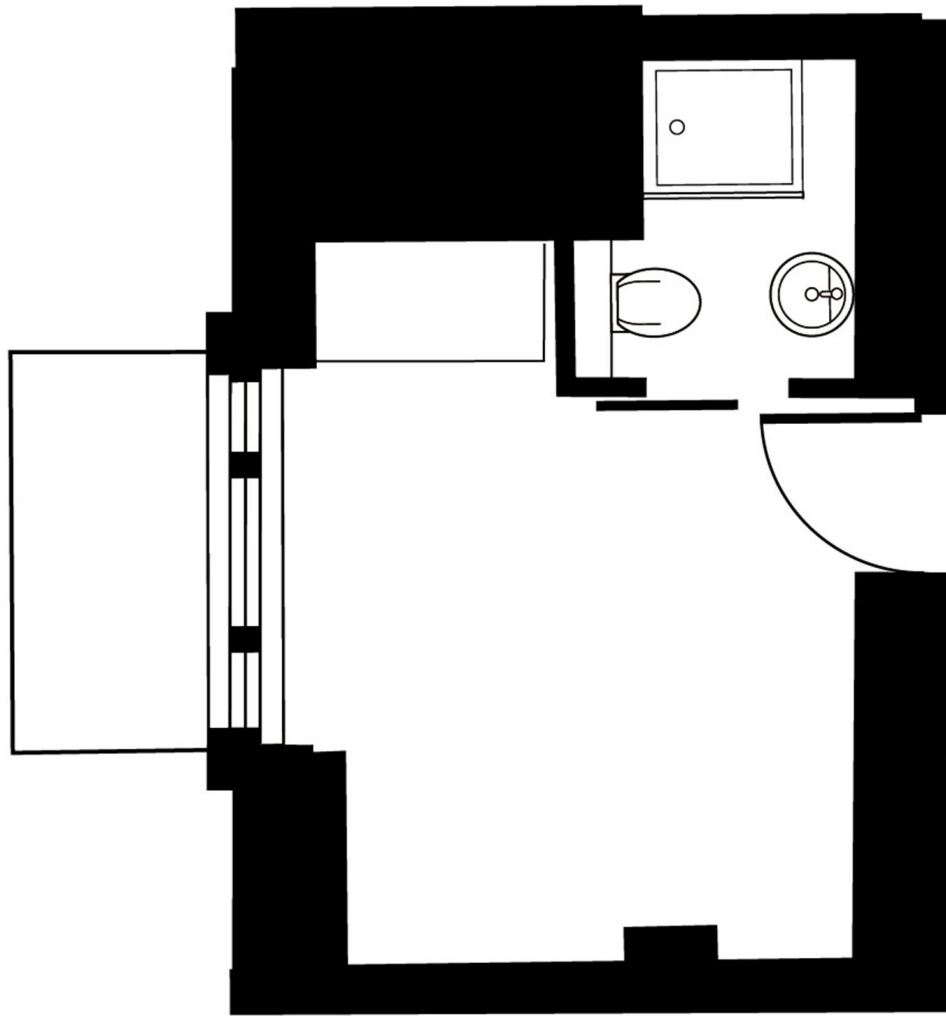
Studio flat with a large window providing good natural light and excellent storage space. Well laid out and suitable for comfortable city living.

Situated on Judd Street in the heart of Bloomsbury, the property is within walking distance of King's Cross St Pancras, offering excellent transport links across London and beyond. Nearby are shops, cafés, restaurants, and the green spaces of Russell Square, as well as several universities and cultural attractions.

### Features

- Prime Location
- Studio
- Great Condition
- Excellent Transport Links
- Large Window
- Good Storage

# Judd Street, London, WC1H



13.1 sqm  
141 sqft