



Great Hill, Shefford, SG17 5EA

Welcome to

Great Hill, Shefford

William h Brown are delighted to present this three-bedroom mid-terraced house in the charming town of Shefford.

Entrance Hall

Hard Flooring, Radiator, Adjustable Spotlights, Door to Living Room

Living Room

13' max x 11' 9" max (3.96m max x 3.58m max)
Hard Flooring, Fireplace, Under-Stair Storage Cupboard, Windows to Front & Side Aspect, Radiator, Door to Entrance Hall

Kitchen/Dining Room

15' 2" x 9' 11" (4.62m x 3.02m)
Hard Flooring, Integrated Dishwasher, Integrated Fridge & Freezer, Gas Hob, Combi Boiler, Radiator, Window to Rear Aspect, Door leading to Rear Garden

Bedroom One

12' 5" max x 10' max (3.78m max x 3.05m max)
Carpeted, Radiator, Adjustable Ceiling Lights, Window to Rear Aspect

Bedroom Two

13' 2" max x 12' 6" max (4.01m max x 3.81m max)
Carpeted, Radiator, Ceiling Fan, Multi-Head Spotlights, Window to Front Aspect

Bedroom Three

9' 4" x 9' (2.84m x 2.74m)
Carpeted, Radiator, Storage Cupboard, Window to Front Aspect

Bathroom

8' x 5' 6" (2.44m x 1.68m)
Tiled Flooring, Wash Hand Basin, Bath with Shower Overhead, WC, Radiator, Adjustable Ceiling Spotlights, Window to Rear Aspect (overlooking Rear Garden)

Rear Garden

Patio to the Front (by Back Door), Astro Turf, Shed with Fuse Box, Door to Side Access (through to the Front), Sockets & Light in Alley, External Sockets





View this property online williamhbrown.co.uk/Property/BFD105573



Welcome to

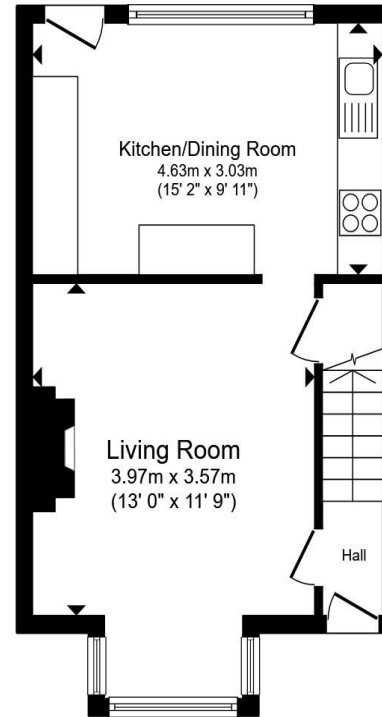
Great Hill, Shefford

- Three-Bedrooms
- Mid-Terraced
- Fireplace in Living Room
- Rear Garden
- Driveway for Two Vehicles

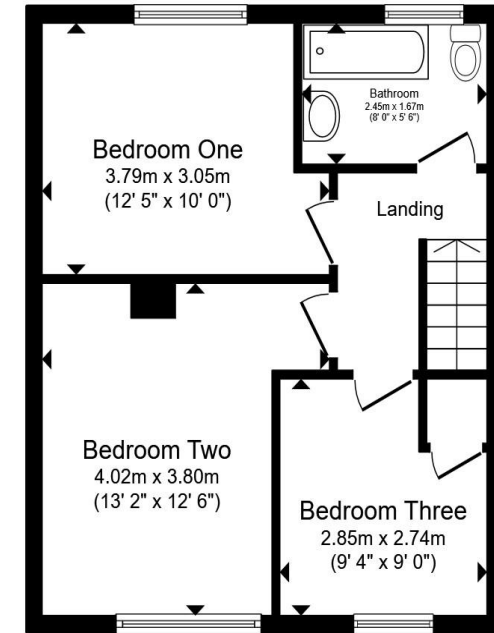
Tenure: Freehold EPC Rating: C
Council Tax Band: C

Offers In Excess Of

£355,000



Ground Floor



First Floor

Total floor area 76.8 m² (826 sq.ft.) approx

This floor plan is for illustrative purposes only. It is not drawn to scale. Any measurements, floor areas (including any total floor area), openings and orientation are approximate. No details are guaranteed, they cannot be relied upon for any purpose and they do not form part of any agreement. No liability is taken for any error, omission or misstatement. A party must rely upon its own inspection(s). Powered by www.propertybox.io



View this property online williamhbrown.co.uk/Property/BFD105573



Property Ref:
BFD105573 - 0004

1. MONEY LAUNDERING REGULATIONS Intending purchasers will be asked to produce identification documentation at a later stage and we would ask for your co-operation in order that there is no delay in agreeing the sale. 2. These particulars do not constitute part or all an offer or contract. 3. The measurements indicated are supplied for guidance only and as such must be considered incorrect. Potential buyers are advised to recheck measurements before committing to any expense. 4. We have not tested any apparatus, equipment, fixtures or services and it is in the buyer's interest to check the working condition of any appliances. 5. Where an EPC, or a Home Report (Scotland only) is held for this property, it is available for inspection at the branch by appointment. If you require a printed version of a Home Report, you will need to pay a reasonable production charge reflecting printing and other costs. 6. We cannot offer an opinion either written or verbal on the content of these reports and this must be obtained from your legal representative. 7. Whilst we take care in preparing these reports, a buyer should ensure that his/her legal representative confirms as soon as possible all matters relating to title including the extent and boundaries of the property and other important matters before exchange of contracts.

William H Brown is a trading name of Sequence (UK) Limited which is registered in England and Wales under company number 4268443, Registered Office is Cumbria House, 16-20 Hockliffe Street, Leighton Buzzard, Bedfordshire, LU7 1GN. VAT Registration Number is 500 2481 05.


william h brown



01234 268367



bedford@williamhbrown.co.uk



40 Allhallows, BEDFORD, Bedfordshire, MK40 1LN



williamhbrown.co.uk