



River Park Tower, 1 Nine Elms Lane

, London SW8 5HF

- Approx. 178m²
- Contemporary Open-Plan Kitchen
- 24-Hour Concierge
- Minutes from Nine Elms & Battersea Power Station Stations
- CTB-G
- Modern 3 Bedroom Apartment
- Fully Furnished to a High Standard
- Residents' Gym, Lounge & Cinema Room
- EPC-B

£19,998 Per Month

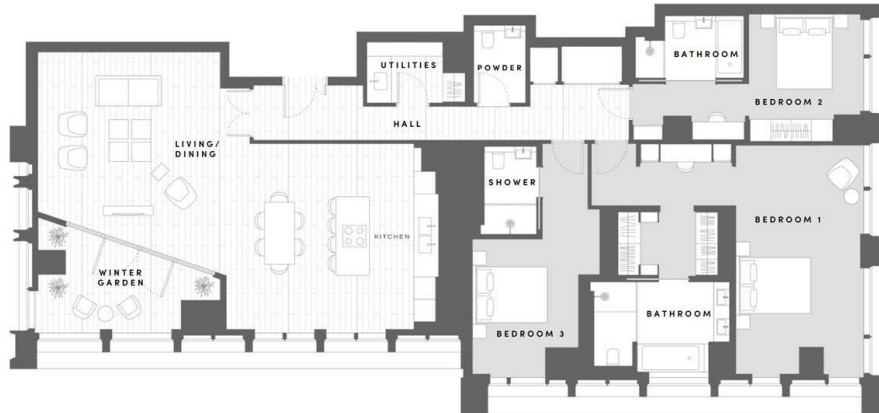
Local Authority **Wandsworth**
 Council Tax Band **G**
 EPC Rating **B**

RIVER PARK TOWER – INVESTOR PROPOSITION

SPECIFICATIONS & FLOORPLANS PAGE 6 OF 50

3 BEDROOM, 4 BATHROOM

TOTAL AREA	188.9 SQ M	2,033 SQ FT
Living / Dining / Kitchen	10.78m x 6.69m	35'4" x 21'11"
Winter Garden	4.99m x 2.21m	16'4" x 7'3"
Bedroom 1 (En-suite)	7.32m x 6.25m	24'0" x 20'6"
Bedroom 2 (En-suite)	6.24m x 3.38m	20'6" x 11'1"
Bedroom 3 (En-suite)	6.28m x 3.1m	20'7" x 10'2"



FOR ILLUSTRATIVE PURPOSES ONLY. DO NOT SCALE.

London Office Office

Spaces Victoria, 25 Wilton Road, Pimlico,
 London, SW1V 1LW

Contact

020 3084 3094
 XL@londonvictoriagroups.co.uk
 www.londonvictoriagroups.co.uk

Agents Note: Whilst every care has been taken to prepare these particulars, they are for guidance purposes only. All measurements are approximate and for general guidance purposes only and whilst every care has been taken to ensure accuracy, they should not be relied upon and potential buyers/tenants are advised to recheck the measurements.

