




## Lydford Road, Mapesbury, NW2

£1,500,000

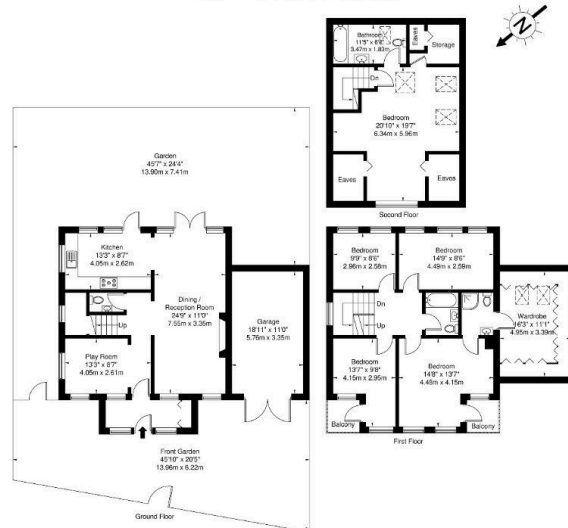
 5  3  2



- A detached 5 bedroom family home renovated to a high standard
- In the heart of the highly sought-after Mapesbury conservation area
- GUIDE PRICE £1,500,000 to £1,650,000
- Conveniently placed for great transport links. Tube station is Willesden Green (Jubilee Line)
- Local shops are a short walk away and Staples Corner and Brent Cross are a short drive away
- Private South East facing landscaped garden
- The garage is large enough to house car as well as provide storage and there is a driveway
- A short stroll away to beautiful Gladstone Park
- There are numerous schools including Anson Road Primary school and Mulberry House
- Oli & Liana are delighted to be instructed as sole agents on this unique family home



Approx. Gross Internal Area = 200.6 sq m / 2159 sq ft  
 Garage = 13.2 sq m / 142 sq ft  
 Total = 213.8 sq m / 2301 sq ft



Ref

Copyright

**BLEU  
PLAN**

The Floor plan is not to scale and measurements and areas shown are approximate and therefore should be used for illustrative purposes only. The plan has been prepared in accordance with the RICS code of Measuring Practice and whilst we have confidence in the information produced it must not be relied on. If there is any aspect of particular importance, you should carry out or commission your own inspection of the property.  
 Copyright © BLEUPLAN

**GUIDE PRICE £1,500,000 to £1,650,000**

A fully detached 5 bedroom family home with a beautiful South East facing, private landscaped garden situated on Lydford Road, in the heart of the highly sought-after Mapesbury conservation area. A stroll away from the wonderful Gladstone Park, The Mapesbury Dell and Willesden Green Tube Station (Jubilee Line).

Oli & Liana are delighted to be instructed as sole agents on this unique family home.