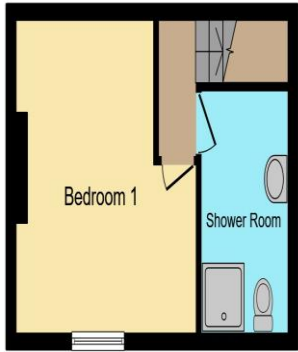
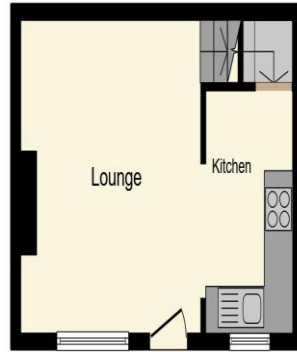




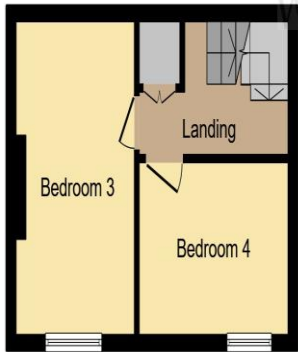
**John Street, Leeds LS6 1JE**



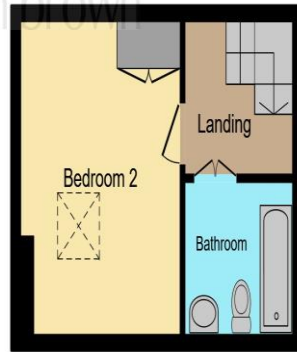
Basement



Ground Floor



First Floor



Second Floor

This floor plan is for illustrative purposes only. It is not drawn to scale. Any measurements, floor areas (including any total floor area), openings and orientation are approximate. No details are guaranteed, they cannot be relied upon for any purpose and they do not form part of any agreement. No liability is taken for any error, omission or misstatement. A party must rely upon its own inspection(s). Powered by www.focalagent.com

## welcome to John Street, Leeds

- Four Double Bedrooms
- Accommodation Over Four Floors
- Offered with NO CHAIN
- Popular Residential Area
- Fantastic Opportunity

Tenure: Freehold  
EPC Rating: D

Council Tax Band: A

# £230,000



**John Street  
Ground Floor  
Lounge**

13' 9" x 12' 9" max ( 4.19m x 3.89m max )

**Kitchen**

11' 1" x 5' 10" max ( 3.38m x 1.78m max )

**Lower Ground Floor  
Bedroom One**

13' 2" x 12' 7" max ( 4.01m x 3.84m max )

**Ensuite  
First Floor  
Landing**

**Bedroom Two**

13' 9" x 8' 1" ( 4.19m x 2.46m )

**Bedroom Three**

10' 11" x 8' 5" ( 3.33m x 2.57m )

**Second Floor  
Bedroom Four**

12' 6" x 10' 5" max ( 3.81m x 3.17m max )  
**Bathroom**

**view this property online** [williamhbrown.co.uk/Property/HEA109509](http://williamhbrown.co.uk/Property/HEA109509)



1. MONEY LAUNDERING REGULATIONS Intending purchasers will be asked to produce identification documentation at a later stage and we would ask for your co-operation in order that there is no delay in agreeing the sale. 2. These particulars do not constitute part or all of an offer or contract. 3. The measurements indicated are supplied for guidance only and as such must be considered incorrect. Potential buyers are advised to recheck measurements before committing to any expense. 4. We have not tested any apparatus, equipment, fixtures or services and it is in the buyers interest to check the working condition of any appliances. 5. Where an EPC, or a Home Report (Scotland only) is held for this property, it is available for inspection at the branch by appointment. If you require a printed version of a Home Report, you will need to pay a reasonable production charge reflecting printing and other costs. 6. We are not able to offer an opinion either written or verbal on the content of these reports and this must be obtained from your legal representative. 7. Whilst we take care in preparing these reports, a buyer should ensure that his/her legal representative confirms as soon as possible all matters relating to title including the extent and boundaries of the property and other important matters before exchange of contracts.

**Property Ref:**

HEA109509 - 0003

William H Brown is a trading name of Sequence (UK) Limited which is registered in England and Wales under company number 4268443, Registered Office is Cumbria House, 16-20 Hockliffe Street, Leighton Buzzard, Bedfordshire, LU7 1GN. VAT Registration Number is 500 2481 05.



william h brown



**0113 278 5337**



[Headingley@williamhbrown.co.uk](mailto:Headingley@williamhbrown.co.uk)



1a Arndale Centre, Otley Road, LEEDS, West Yorkshire, LS6 2UE



[williamhbrown.co.uk](http://williamhbrown.co.uk)