



Homestead, BS30 8AE

03334041188 option 3

Asking Price £300,000

guy.rolfe@moving-you.co.uk

Freehold

www.moving-you.co.uk









Homemead, Cadbury Heath, Bristol, BS30 8AE

This super three-bedroom terraced home in the ever popular BS30, offers a well-presented home in good condition, located within a cul-de-sac, ideal for first-time buyers and families.

Inside, the property which includes a homely front living room, an open-plan modern kitchen/diner, designed to flow naturally into the main living space, creating a sociable hub for cooking, dining and relaxing. There is a modern bathroom, along with three bedrooms arranged as a master bedroom, a further double bedroom and a single bedroom, providing flexible accommodation for children, guests or a home office.

Outside, the property benefits from useful outbuildings, offering practical storage or hobby space.

The location includes nearby schools, making the daily school run straightforward and adding to the appeal for families with children. Bristol offers a wide choice of primary and secondary education, along with further education and colleges within reasonable reach.

Public transport in Cadbury Heath is well served by regular bus routes into the city centre and surrounding districts, and there are several train stations across the city providing services towards Bath, Cardiff, London and the South West. Road links via the A4174 and access towards the M4 and M5 make commuting by car straightforward.

Overall, this three-bedroom terraced home for sale offers a practical home in good condition with modern fittings and nearby schools.

Council Tax Band B

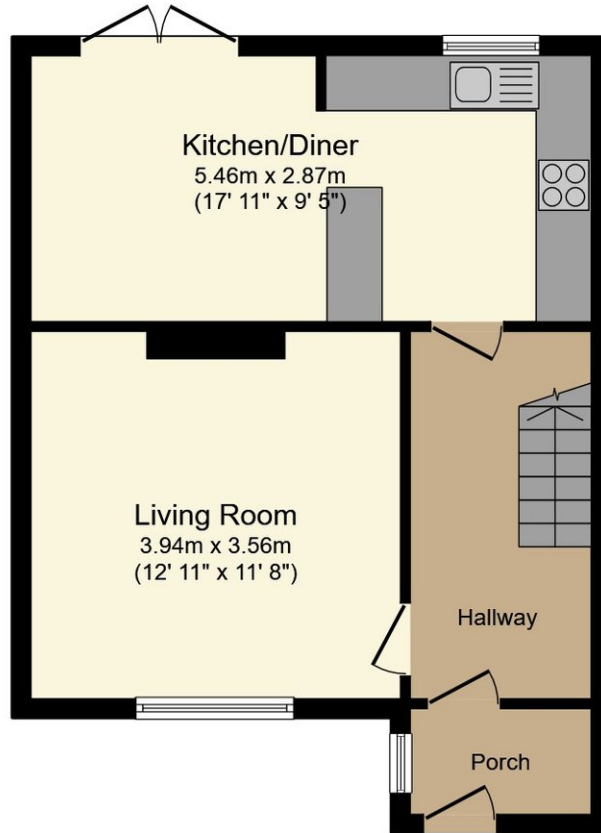
*Please note that the agent believes there to be a flying freehold relating to the shared access way between the terraced houses.

**We believe that this home is Laing Easi form construction.

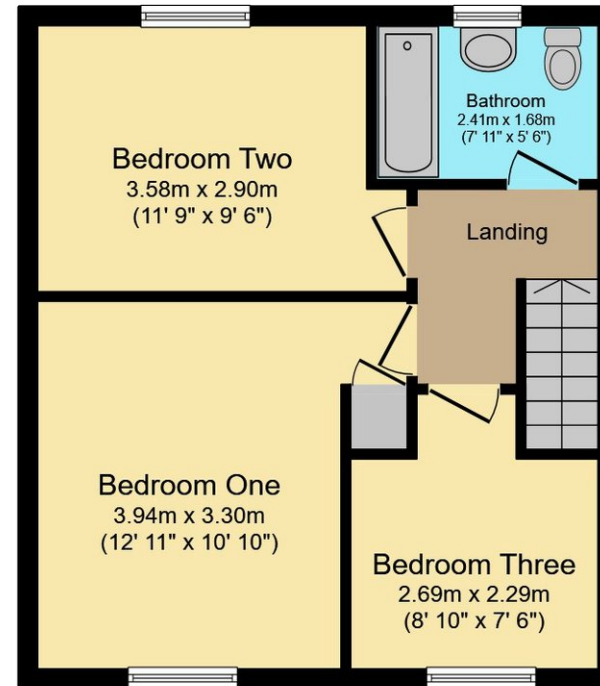








Ground Floor



First Floor

This floor plan is for illustrative purposes only. It is not drawn to scale. Any measurements, floor areas (including any total floor area), openings and orientations are approximate. No details are guaranteed, they cannot be relied upon for any purpose and do not form any part of any agreement. No liability is taken for any error, omission or misstatement. A party must rely upon its own inspection(s). Powered by www.Propertybox.io



Guy Rolfe Moving You

03334041188 option 3

guy.rolfe@moving-you.co.uk

PROPERTY MISDESCRIPTIONS ACT 1991: The Agents has not tested any apparatus, equipment, fixtures and fittings, or services, so cannot verify that they are in working order or fit for the purpose. The buyer is advised to obtain verification from his or her Professional Buyer, References to the Tenure of the property are based on information supplied by the Vendor. The agents have not had sight of the title documents. The buyer is advised to obtain verification from their Solicitor. You are advised to check the availability of any property before travelling any distance to view.

www.moving-you.co.uk