



Fitzroy Square, W1T

£392 Per week

Dexters



Fitzroy Square, W1T

This charming studio flat is located on the first floor of a Georgian period terrace in the historic Fitzroy Square, Fitzrovia. Recently refurbished, it features a main studio area with a large skylight, an enclosed kitchenette and a modern shower room.

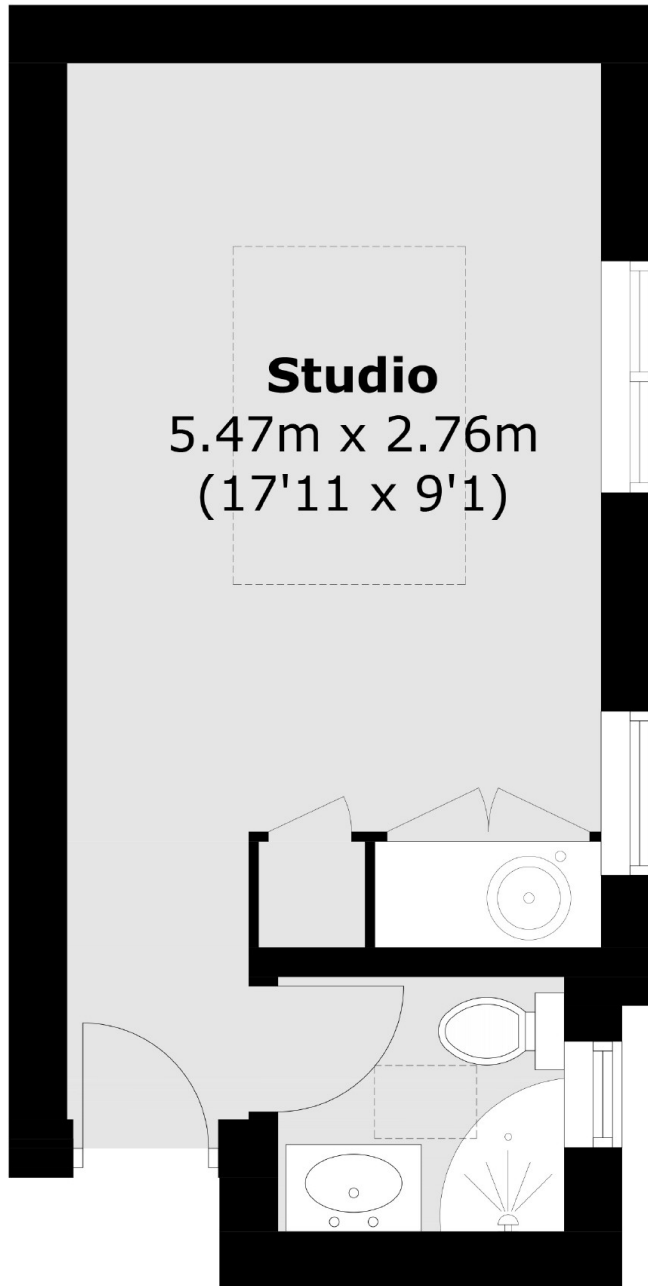
The property is just moments away from Oxford Street, Covent Garden and Bloomsbury with great commute links at Euston, King's Cross and St Pancras.

Features

- Pied-à-Terre
- No Oven/Washing Machine
- Exceptionally Bright
- Communal Gardens Access
- Separate Bathroom
- Modern



Fitzroy Square, London, W1T



Studio
5.47m x 2.76m
(17'11 x 9'1)

First Floor

Total area (approx.): 15.9 sq. m (171.1 sq. ft)