



## Leigham Avenue, SW16

£425,000

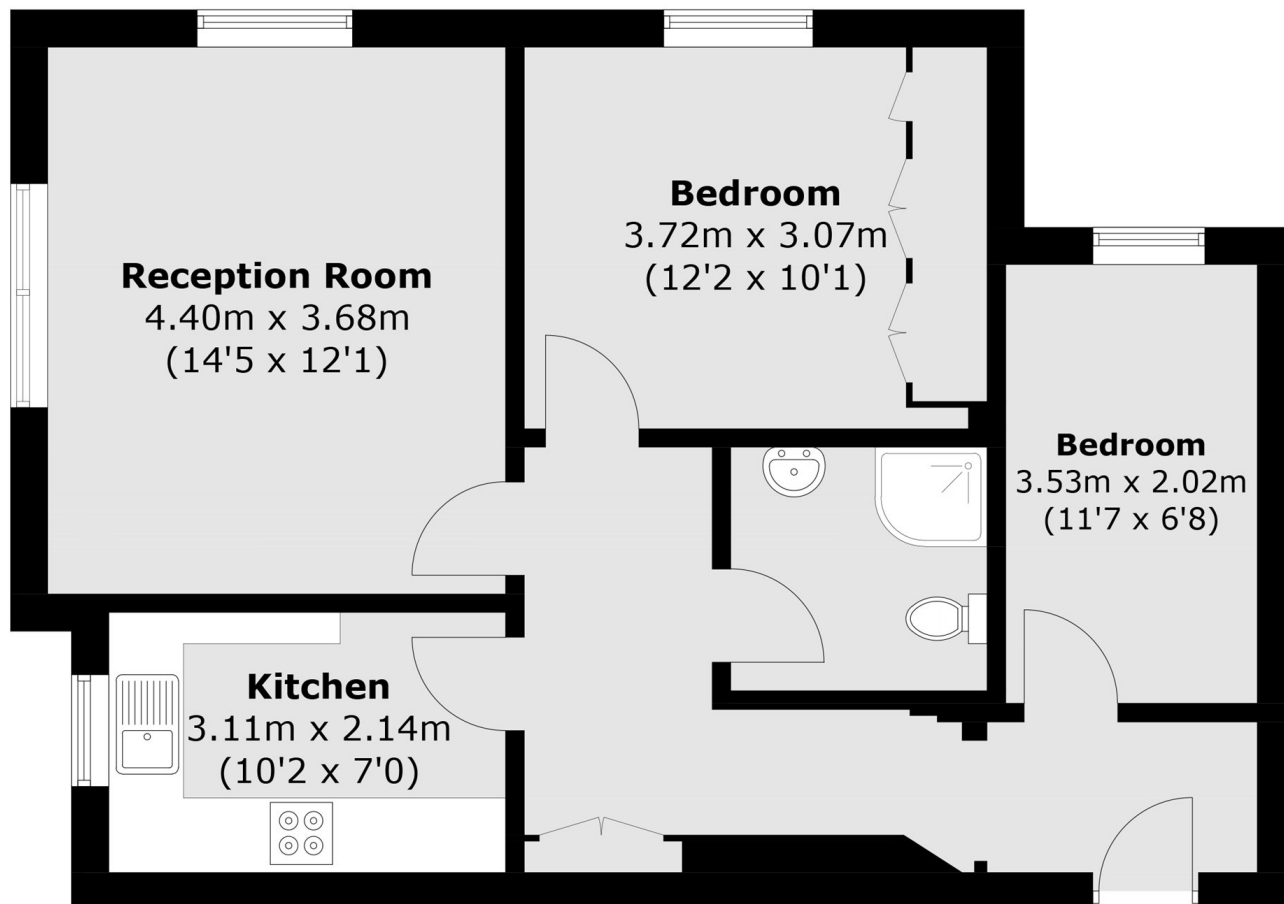
Located in a sought-after block in the heart of Streatham, this spacious two double bedroom apartment spans over 647 sq ft and features a separate modern kitchen, a generous reception room and excellent built-in storage throughout and an allocated parking space as well as a shared garden.

Perfectly positioned on Streatham High Road, Holmleigh Court benefits from excellent transport links, with Streatham Hill and Streatham mainline stations nearby, multiple bus routes on the doorstep, and quick, easy access to Brixton.

### Features

- Two Double Bedrooms
- No Onward Chain
- Separate Kitchen
- Allocated Parking Space
- Over 647 Sq Ft
- Shared Garden

# Leigham Avenue, London, SW16



## Second Floor

Total area (approx.): 59.8 sq. m (643.7 sq. ft)