



Abbey Road, NW8

£2,300 Per calendar month

A modern first floor one bedroom apartment in a portered block with communal heating and hot water included in the rent. Bright reception room with open plan kitchen, double bedroom and a modern bathroom. Ideal for single professional or couple.

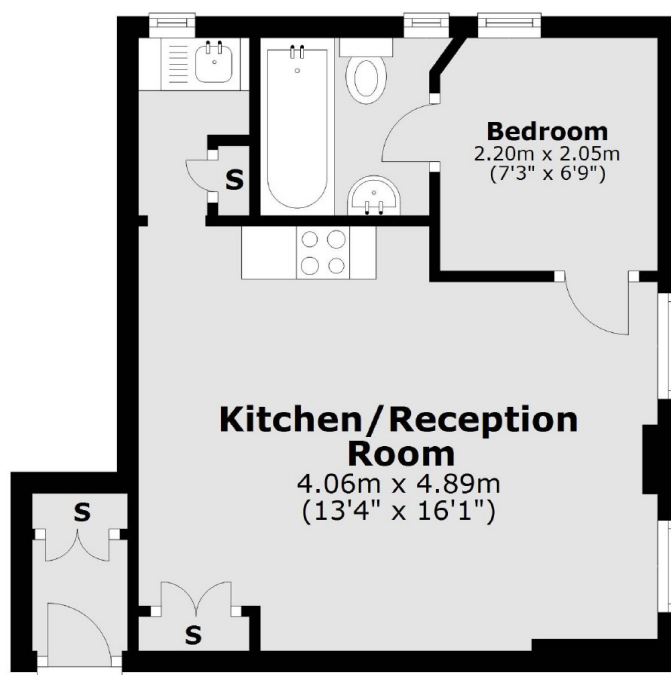
Mortimer Court is located next to the Abbey Road Studios, a short distance to St Johns Wood Underground station and close to local shops and cafés on Nugent Terrace and Boundary Road.

Features

- One Double Bedroom
- Open Plan Kitchen
- First Floor Apartment
- Lift
- Heating and Hot Water Included
- Day Porter

Abbey Road, London, NW8

First Floor



Total area: approx. 29.8 sq. metres (320.3 sq. feet)