



Connells

Dove House Dove Place
AYLESBURY



Property Description

Charming TWO Bedroom First-Floor Apartment in the sought-after Watermead area. This well-presented two-bedroom apartment offers comfortable living with the added convenience of residents parking.

Step into the welcoming entrance hall, where laminate flooring leads you seamlessly into a bright and spacious lounge. With two front-facing windows, the room is awash with natural light, creating a warm and inviting atmosphere. The adjacent kitchen continues the stylish laminate finish and features wall and base units, an integrated gas hob and electric oven, as well as a handy storage cupboard.

You'll find two well-proportioned bedrooms both with carpet underfoot and the second bedroom housing a storage cupboard. They share access to a contemporary family bathroom, complete with a bathtub, wash hand basin, and WC.

Residents benefit from designated parking and peaceful surroundings, making this apartment a perfect choice for first time buyers or downsizers.

Situated on the northern outskirts of the town, continues to be as popular today as it was when the very first homes were released in

the late 1980's. With two magnificent lakes, a quaint village centre and open countryside on the doorstep a more picturesque setting would be hard to imagine. The location offers convenient access by road towards the M25 and M40 as well as being a short drive to Aylesbury Parkway Train Station offering mainline services to London Marylebone.

Entrance Hall

Carpet underfoot

Lounge

13' 11" x 12' 9" (4.24m x 3.89m)

Carpet underfoot

Window to front

Radiator

Kitchen

12' 10" x 7' 7" (3.91m x 2.31m)

Window to front

Electric oven and gas hob

Radiator

Space for freestanding washing machine and fridge freezer

Boiler

Storage cupboard

Wall and base units

Laminate underfoot

Bedroom One

11' 3" x 10' 7" (3.43m x 3.23m)

Window to rear

Carpet underfoot

Shutter blinds

Bedroom Two

13' 2" x 6' 9" (4.01m x 2.06m)

Window to rear

Crpet underfoot

Storage cupboard

Bathroom

WC

Wash hand basin

Bath with overhead shower

Radiator

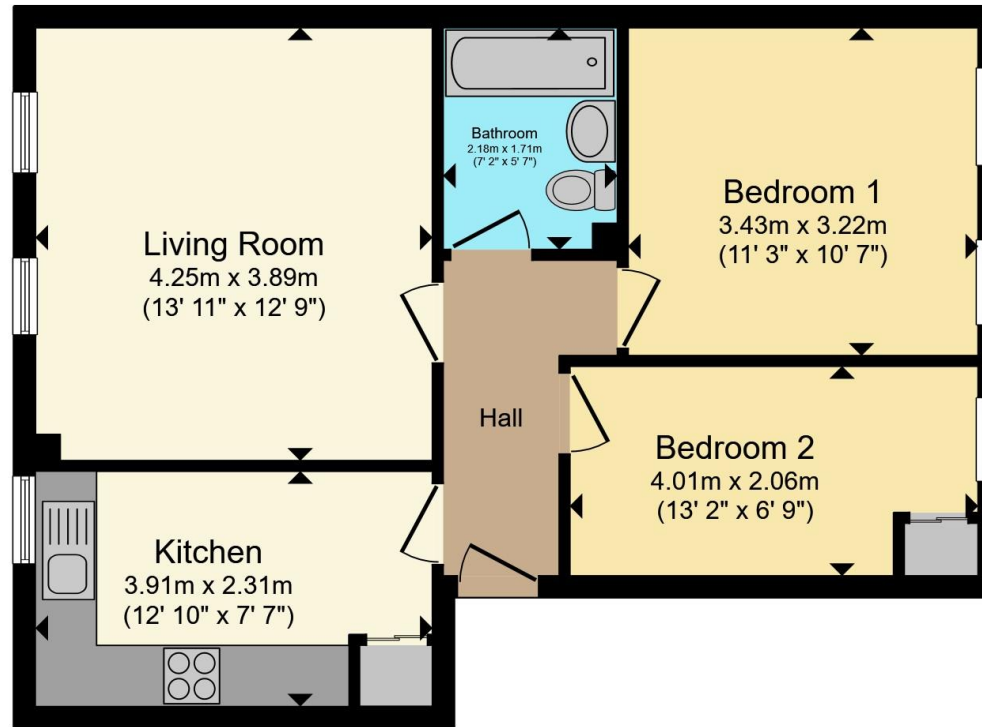
Laminate underfoot

Tiling









Total floor area 54.6 m² (588 sq.ft.) approx

This floor plan is for illustrative purposes only. It is not drawn to scale. Any measurements, floor areas (including any total floor area), openings and orientation are approximate. No details are guaranteed, they cannot be relied upon for any purpose and they do not form part of any agreement. No liability is taken for any error, omission or misstatement. A party must rely upon its own inspection(s). Powered by www.propertybox.io



To view this property please contact Connells on

T 01296 395 111
E aylesbury@connells.co.uk

2 Temple Street
 AYLESBURY HP20 2RH

EPC Rating: C Council Tax Band: C

Service Charge: 1200.00

Ground Rent: 480.00

Tenure: Leasehold

view this property online connells.co.uk/Property/ALS312981

This is a Leasehold property with details as follows; Term of Lease 125 years from 24 Jun 1990. Should you require further information please contact the branch. Please Note additional fees could be incurred for items such as



1. MONEY LAUNDERING REGULATIONS Intending purchasers will be asked to produce identification documentation at a later stage and we would ask for your co-operation in order that there will be no delay in agreeing the sale. 2. These particulars do not constitute part or all of an offer or contract. 3. The measurements indicated are supplied for guidance only and as such must be considered incorrect. Potential buyers are advised to recheck measurements before committing to any expense. 4. We have not tested any apparatus, equipment, fixtures, fittings or services and it is in the buyers interest to check the working condition of any appliances.

Connells Residential is registered in England and Wales under company number 1489613, Registered Office is Cumbria House, 16-20 Hockliffe Street, Leighton Buzzard, Bedfordshire, LU7 1GN. VAT Registration Number is 500 2481 05.

See all our properties at www.connells.co.uk | www.rightmove.co.uk | www.zoopla.co.uk

Property Ref: ALS312981 - 0002