

Major Court, Five Post Lane,
Elson, Gosport, Hampshire, PO12 4QJ

£195,000



One Bedroom Bungalow For Over 60's

Lounge To Rear With Direct Access To Garden

Modern Kitchen

Modern Shower Room

Gas Central Heating

Solar Panels Which Are Owned & Battery Storage

Low Maintenance Rear Garden

Triple Glazing

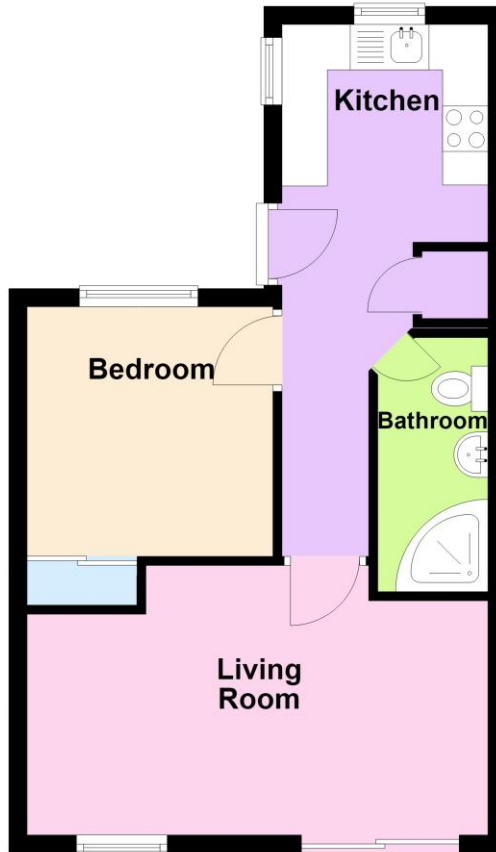
023 9258 5588

6 Stokesway, Stoke Road, Gosport, Hants, PO12 1PE

Email: office@dimon-estate-agents.co.uk

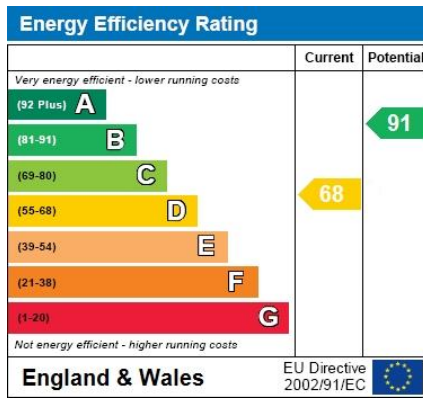
To view all our properties visit:
www.GosportProperty.com

Ground Floor



**SELLING YOUR OWN PROPERTY IN GOSPORT?
WE ARE A FAMILY RUN BUSINESS SELLING HOMES IN GOSPORT FOR 55 YEARS
AND WOULD WELCOME THE OPPORTUNITY TO BE CHOSEN AS YOUR ESTATE AGENT**

Hallway	PVCu double glazed front door, radiator, coved ceiling, storage cupboard with shelving.
Kitchen	9'8" (2.95m) x 6'2" (1.88m) Single drainer stainless steel sink unit, wall and base cupboards with worksurface over space for fridge/freezer, built in oven and electric hob with cooker extractor canopy over, integrated washing machine, 2 PVCu triple glazed windows, tiled splashbacks, wall mounted Worcester gas central heating boiler.
Lounge	16'8" (5.08m) x 9'8" (2.95m) Narrowing to 8'4" (2.54m), Triple glazed window, double glazed patio door giving access to garden, radiator, coved ceiling, fire surround with electric fire.
Bedroom	8'10" (2.69m) x 8'5" (2.57m) To Wardrobe Triple glazed window, radiator, built in mirror fronted wardrobe, access to loft space.
Shower Room	White suite of shower cubicle, pedestal hand basin, low level W.C., tiled splashbacks, radiator, coved ceiling, extractor fan.
OUTSIDE	
Front Garden	Block paved car hardstanding.
Rear Garden	Paved patio, timber pedestrian gate to rear passageway which has a further gate, which each of the owners has a key to.
Services	We understand that this property is connected to mains gas, electric, water and sewage.
Tenure	Freehold.
Council Tax	Band B.
Property Information	For information on broadband speed and mobile phone coverage for this property visit: https://checker.ofcom.org.uk For flood risk information visit: https://www.gov.uk/check-long-term-flood-risk



Full Energy Performance Certificate
available upon request

Appointment		
Date:	Time:	Person Meeting:
Viewing Notes		

These particulars, whilst believed to be accurate, are set out as a general outline for guidance and do not constitute any part of an offer or contract. Please note we have not tested any apparatus, fixtures, fittings, or services. Interested parties must undertake their own investigation into the working order of these items. All measurements are approximate. Floor Plans are obtained from a third party and may contain inaccuracies. Photographs are for guidance only and may change over the course of marketing. Information provided on lease terms, maintenance and ground rent have been provided by the vendor and you should ask your legal representative to confirm this information before exchanging contracts.