

Longridge, Dockroyd View, Oakworth, BD22 7RH

Asking Price £299,000

Council Tax Band: New Build



Welcome to this stunning new build house located in the exclusive private development of Dockroyd View, nestled in the heart of Oakworth Village. This delightful property boasts three well-proportioned bedrooms, making it an ideal home for families or those seeking extra space.

Upon entering, you will find a spacious reception room that offers a warm and inviting atmosphere, perfect for both relaxation and entertaining guests. The house has been constructed to a high specification, ensuring modern comforts and stylish finishes throughout.

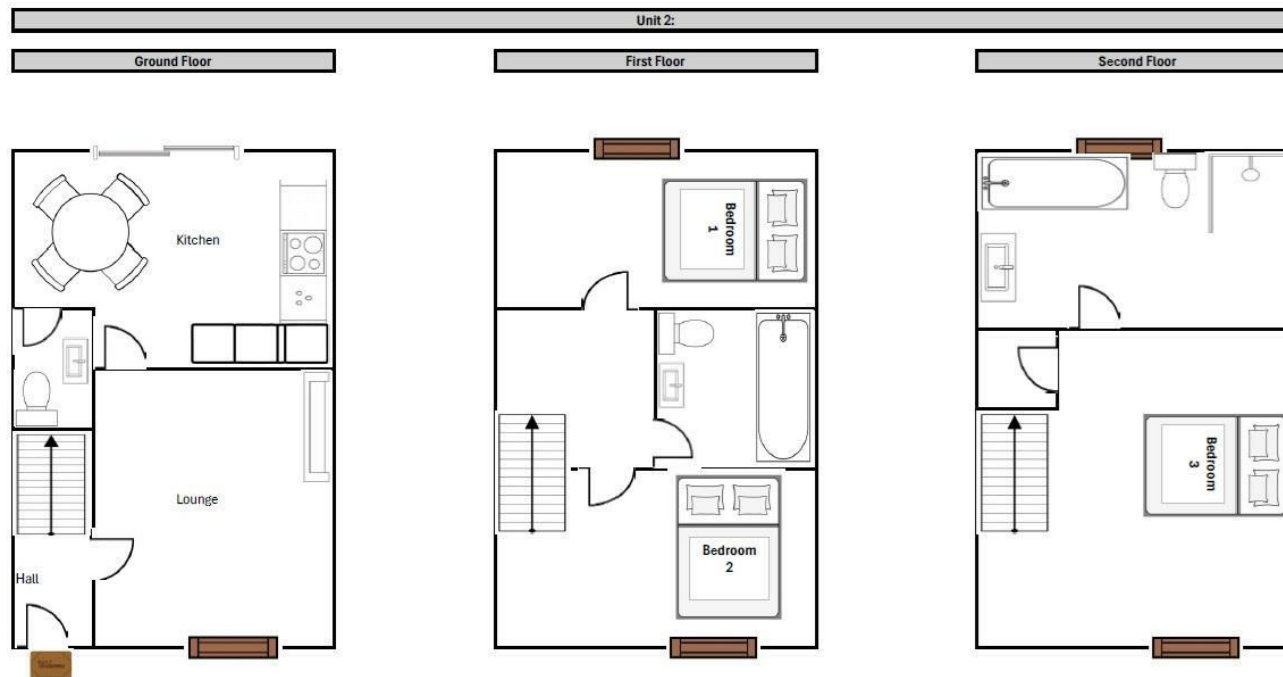
The property features a well-appointed bathroom, designed with contemporary fixtures and fittings, providing a serene space for your daily routines. The layout of the home is thoughtfully designed to maximise space and light, creating a welcoming environment.

Situated close to local amenities and schools, this home offers convenience for everyday living. Whether you are looking for shops, parks, or educational facilities, everything you need is just a stone's throw away.

This new build house in Oakworth is not just a property; it is a lifestyle choice, offering a blend of modern living in a charming village setting. Do not miss the opportunity to make this beautiful house your new home.



Keighley



Energy Efficiency Rating		
	Current	Potential
Very energy efficient - lower running costs		
(92 plus) A		
(81-91) B		
(69-80) C		
(55-68) D		
(39-54) E		
(21-38) F		
(1-20) G		
Not energy efficient - higher running costs		
England & Wales	EU Directive 2002/91/EC	