



Connells

Olive Grove
Swindon



Property Description

This TWO BEDROOM SEMI DETACHED property is a perfect STARTER home, or an ideal investment buy. This home has been well presented throughout. Situated in a convenient location, close to all local schools, shops, and local amenities.

The accommodation comprises Entrance Hall, Lounge/ Diner and Kitchen. Upstairs are two good size bedrooms and a Family Bathroom. The property also benefits from a galvanised steel garage, two allocated parking spaces, and a good sized attractive fully enclosed rear garden. A perfect location for al fresco dining and entertaining in those summer months.

Ground Floor Accommodation

Entrance Hall

Double glazed door to front aspect, double glazed window to front aspect, built in storage cupboard

Lounge / Diner

Irregular Shaped Room 16' max x 15' (4.88m max x 4.57m)

Double glazed French doors to rear garden, Two Radiators, Stairs to the first floor, Understairs storage cupboard

Kitchen

7' x 9' (2.13m x 2.74m)

Double glazed window to front aspect, wall and base units with work surfaces over, One and a half sink with drainer, part tiled walls.

Integrated oven, Four ring gas hob, cooker hood, integrated fridge freezer.

Space and plumbing for Washing Machine and Dishwasher, Heated Towel Rail

First Floor Accommodation

Landing

Loft Access, Airing Cupboard, Radiator

Bedroom One

10' x 10' (3.05m x 3.05m)

Double Glazed window to side aspect, Built in wardrobe Radiator

Bedroom Two

9' x 9' 7" (2.74m x 2.92m)

Double Glazed window to side aspect, Fitted wardrobe and cupboard, Radiator

Bathroom

Double Glazed window to front aspect, Bath with Power Shower, Wash Hand Basin with vanity unit, Lower Level WC, Part tiled walls, Heated Towel Rail

External Features

Front Garden

Laid to block tiles, Driveway Parking, Garage

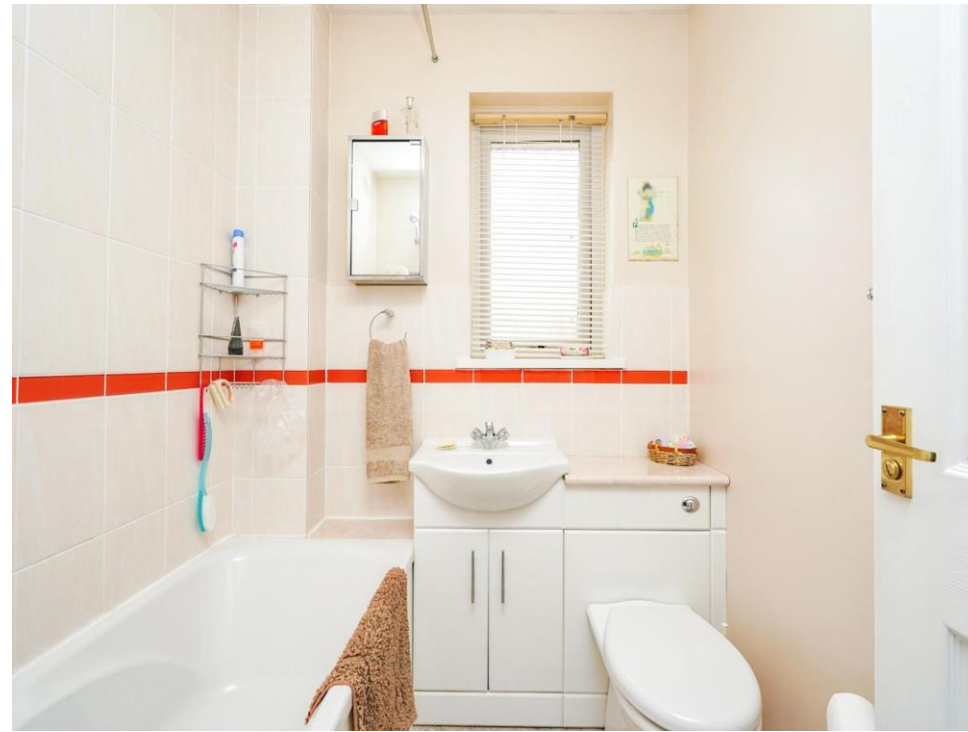
Rear Garden

Mainly laid to lawn, Room for shrubbery, Block patio tile area with room for garden furniture

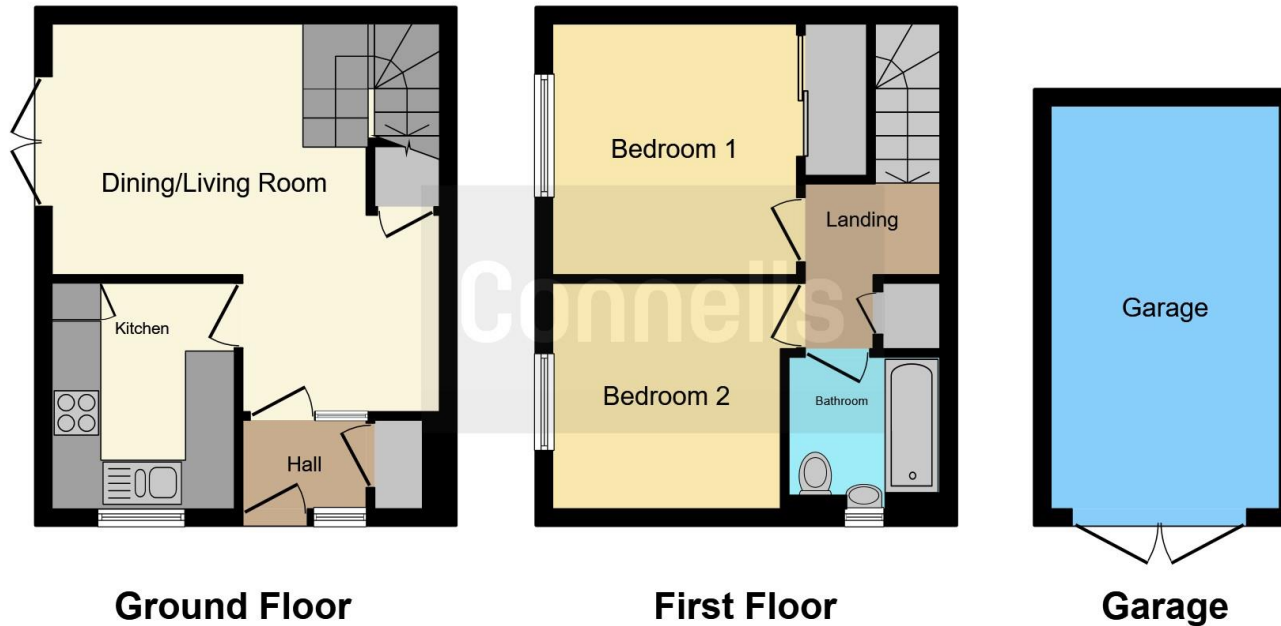
Parking

Two allocated parking spaces









This floorplan is for illustrative purposes only and is not drawn to scale. Measurements, floor-areas, openings and orientations are approximate. They should not be relied upon for any purpose and do not form any part of an agreement. No liability is taken for any error or mis-statement. All parties must rely on their own inspections.

To view this property please contact Connells on

T 01793 708050
E swindonnorth@connells.co.uk

Unit B11 North Swindon District Centre Thamesdown Drive
 SWINDON SN25 4AN

EPC Rating: C

view this property online connells.co.uk/Property/SDN311645

Tenure: Freehold



1. MONEY LAUNDERING REGULATIONS Intending purchasers will be asked to produce identification documentation at a later stage and we would ask for your co-operation in order that there will be no delay in agreeing the sale. 2. These particulars do not constitute part or all of an offer or contract. 3. The measurements indicated are supplied for guidance only and as such must be considered incorrect. Potential buyers are advised to recheck measurements before committing to any expense. 4. We have not tested any apparatus, equipment, fixtures, fittings or services and it is in the buyers interest to check the working condition of any appliances.

Connells Residential is registered in England and Wales under company number 1489613, Registered Office is Cumbria House, 16-20 Hockliffe Street, Leighton Buzzard, Bedfordshire, LU7 1GN. VAT Registration Number is 500 2481 05.

See all our properties at www.connells.co.uk | www.rightmove.co.uk | www.zoopla.co.uk

Property Ref: SDN311645 - 0004