



## St. Johns Road, KT3

£285,000

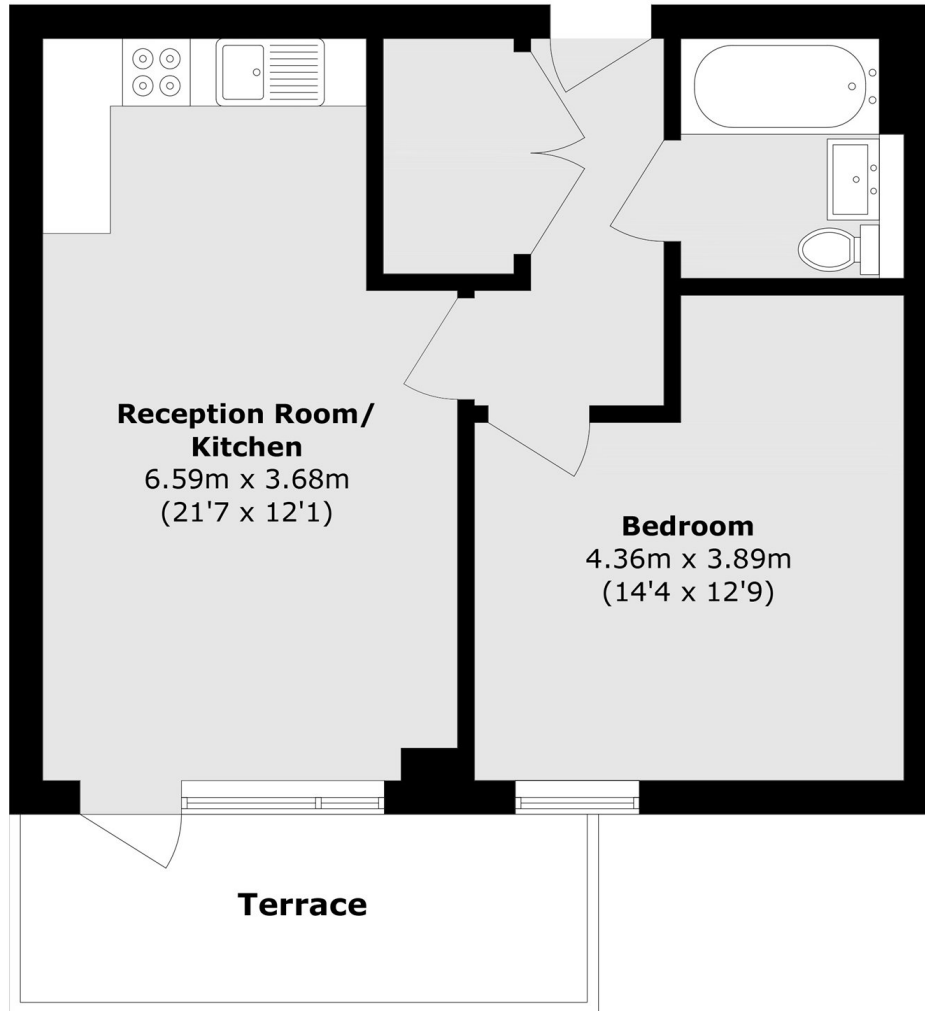
A very light and bright raised ground floor one double bedroom modern apartment in the heart of New Malden. The property is modern throughout and offers great space in the centre of town. It is being sold chain free and also has a large private terrace with direct access to the communal gardens.

Pitsford House forms part of the exclusive Kingston East development moments away from a supermarket, post office, shops and restaurants, as well as a newly opened dental practice that forms part of the development. There are also bus stops close by and you are a mile to Kingston town centre and less than a mile to New Malden Station and High Street.

### Features

- One Double Bedroom
- Modern Condition throughout
- Private Terrace
- Great Location
- Bright and Spacious
- Chain Free

**St. Johns Road,  
NEW MALDEN, KT3**



Total area (approx.): 50.3 sq. m (541.4 sq. ft)

Terrace area (approx.): 8.4 sq. m (90.4 sq. ft)