



Main Road

Wilby, Northamptonshire

content

oriordanbond
SALES & LETTINGS



Main Road

Wilby

NN8 2UE

PRICE £950,000

O'Riordan Bond is delighted to bring to the market this spacious, bespoke, executive style new build five bedroom family home, set on a large plot, with just over 2700 sq. ft. of accommodation. Built by Archdale Homes to a very high standard, the property is designed to enjoy stunning views to both front and rear aspects with luxury modern/contemporary living in mind.

The developer has thought of everything the new home owner would want including two Juliette balconies, log burner, air source under floor heating to the ground floor and bi-fold and French doors to the garden. Accommodation comprises entrance hall, shower room, lounge, kitchen/garden room with bi-fold doors to the garden, utility/boot room, study, dining room with French doors to the garden, first floor landing with Juliette balcony, master bedroom with Juliette balcony and en-suite, guest bedroom with en-suite, three further double bedrooms and a family bathroom. Outside are landscaped gardens and driveway providing ample off road parking leading to a garage. Further benefits include high performance PVC double glazed windows, doors and bi-fold doors, solar panels, granite/quartz work surfaces to the kitchen and utility/boot room, flooring included, Air Source heat pump and alarm. The property also comes with a 10 year insurance backed build warranty. (A/2707/M)

Additional information

- Council Tax Band: New Build
- Energy Efficiency Rating:

Viewing

Viewing strictly by appointment – details below

Disclaimer

O'Riordan Bond Estate Agents Limited has not tested apparatus, equipment, fittings or services and so cannot verify they are in working order. The buyer is advised to obtain verification from their solicitor or surveyor.

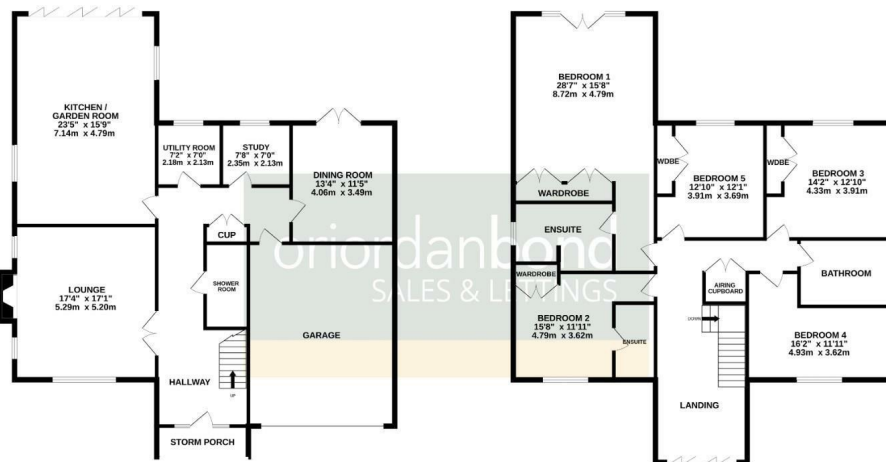
O'Riordan Bond Earls Barton Sales

01604 810088

earlsbarton@oriordanbond.co.uk

GROUND FLOOR

1ST FLOOR



SQ. FTG DOES NOT INCLUDE GARAGE

TOTAL FLOOR AREA: 2707sq.ft. (251.5 sq.m.) approx.

Whilst every attempt has been made to ensure the accuracy of the floorplan contained here, measurements of doors, windows, rooms and any other items are approximate and no responsibility is taken for any error, omission or mis-statement. This plan is for illustrative purposes only and should be used as such by any prospective purchaser. The services, systems and appliances shown have not been tested and no guarantee as to their operability or efficiency can be given.
Made with Metropix ©2025

