

THIO



Sunninghill Lodge, 9 Upper Village Road
£1,250 pcm

OSBORNE HEATH



This property is only available for single occupancy.

A first floor apartment with a kitchen leading to a living and dining room with a Juliet balcony, a double bedroom and a bathroom.

Outside there is one allocated parking space.

Sunninghill Lodge is on Upper Village Road in the centre of Sunninghill village. The village has a number of local high street businesses and great restaurants and pubs. Nearby places of interest include Ascot Racecourse, Coworth Park, Guards Polo Club, The Lexicon, Wentworth Club and Windsor Great Park. Sunninghill is also convenient for the M3, M4, M25 and Heathrow Airport.

Sunninghill Lodge, Ascot

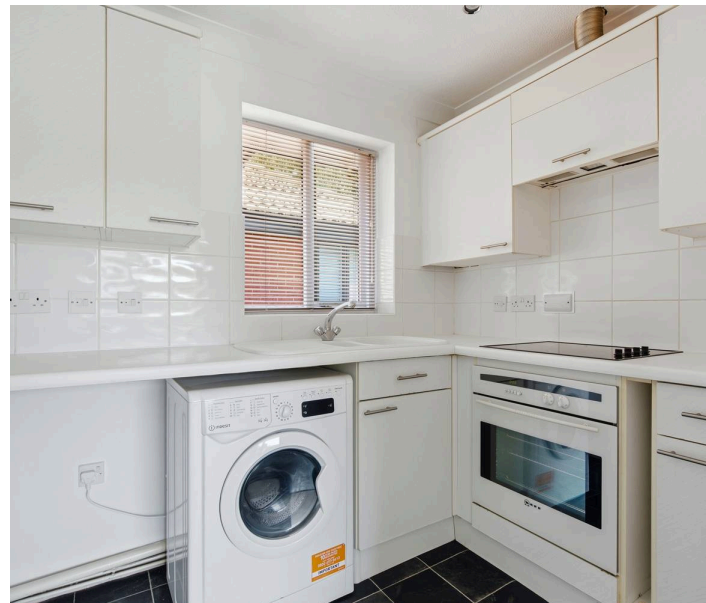
- One Double Bedroom
- First Floor
- Village Location
- Allocated Parking
- Available Immediately
- Only Available For Single Occupancy

Council Tax band: B

Tenure: Leasehold

EPC Energy Efficiency Rating: C

EPC Environmental Impact Rating: D



APPROXIMATE FLOOR AREA
Apartment - 33.62 sq m - 362 sq ft
(Gross Internal Area)



NOT TO SCALE
This plan is for illustration purposes only



First Floor

OSBORNEHEATH.CO.UK

This floor plan has been created by Property Shoot Ltd following the RICS code of measuring and is for indicative guidance only. Whilst every attempt has been made to ensure the accuracy of the floor plan contained here, measurements of doors, windows and rooms are approximate and no responsibility is taken for any error, omission or misstatement.

Details shown on this floorplan, including all measurements, areas and proportions cannot be guaranteed by either the provider or estate agency and should not be relied upon.