



## Jonquil Gardens, TW12

£650,000

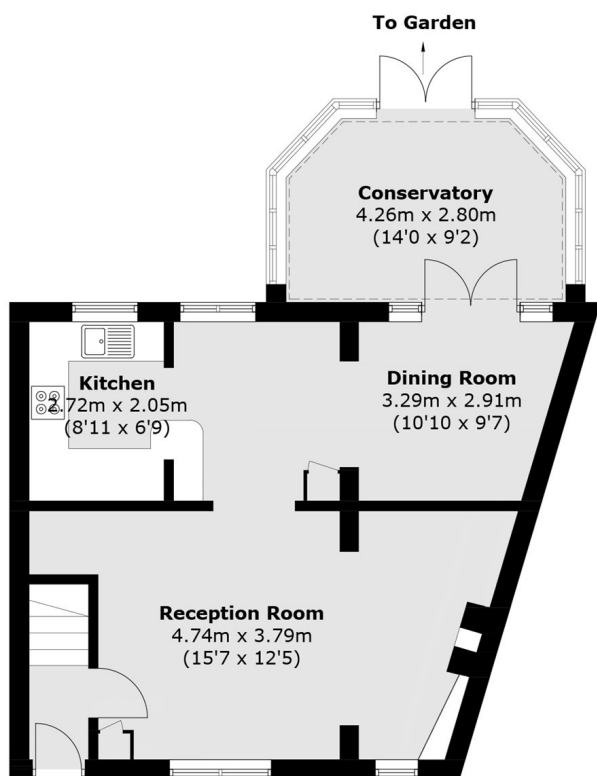
A spacious four-bedroom end-of-terrace home offering over 1,400 sq ft of versatile living space, featuring a bright open living/dining area, conservatory overlooking the garden, and three bathrooms across two upper floors, ideal for growing families.

Set within the popular countryside development you will find that Partridge Road is only a short walk from the local supermarket, excellent schools and transport links with a bus stop at the top of the road and Hampton Station close by.

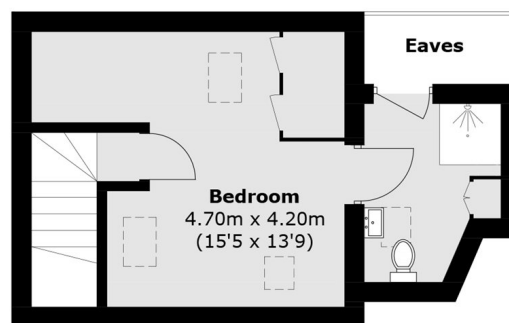
### Features

- Four Bedrooms
- Three Bathrooms
- End Of Terrace
- Private Garden
- Garage
- Allocated Parking

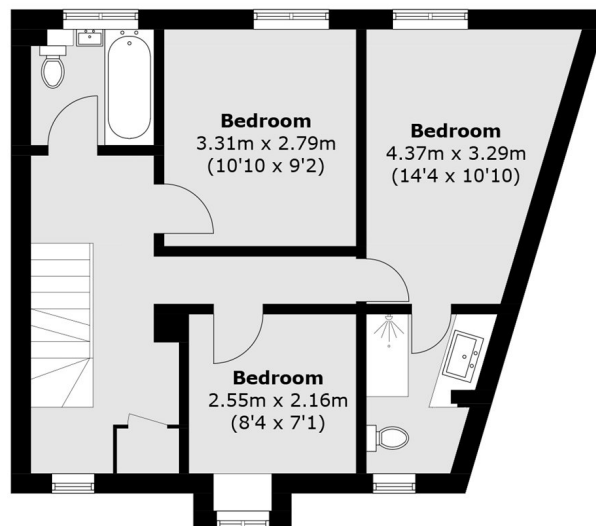
# Jonquil Gardens, Hampton, TW12



**Ground Floor**



**Second Floor**



**First Floor**

Total area (approx.): 137.7 sq. m (1,482.3 sq. ft)  
(Excluding Eaves)