

Colin Dean Residential

in partnership with Dexters



Chiltern Court, UB8

£2,500 pcm

This well-presented four-bedroom, two-bathroom family home offers generous and comfortable living space throughout. The property features four well-proportioned bedrooms, two bathrooms, a stylish separate kitchen equipped with modern integrated appliances, and a spacious, light-filled reception room with sliding doors opening onto a beautifully landscaped private garden. Further benefits include off-street parking, adding to the home's practicality and making it perfectly suited to modern family living.

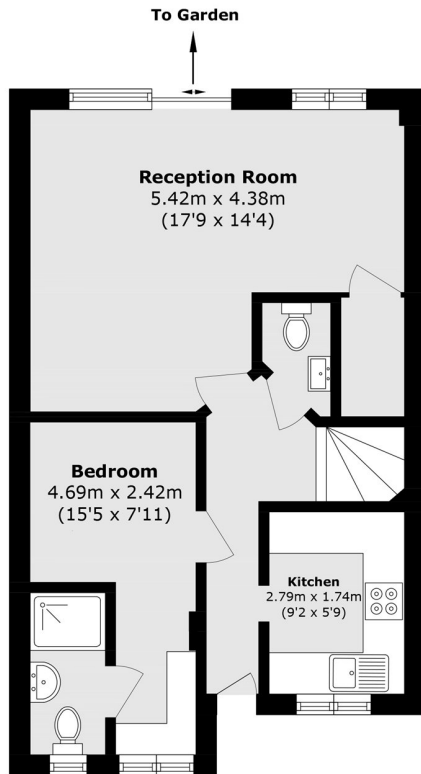
Energy Rating: C.

Situated in a highly desirable location, the property benefits from easy access to a wide range of shopping, dining and leisure facilities, as well as highly regarded local schools. Uxbridge Station (Metropolitan and Piccadilly lines) and the popular Chimes Shopping Centre are approximately two miles away, providing excellent transport links and a variety of retail and entertainment options.

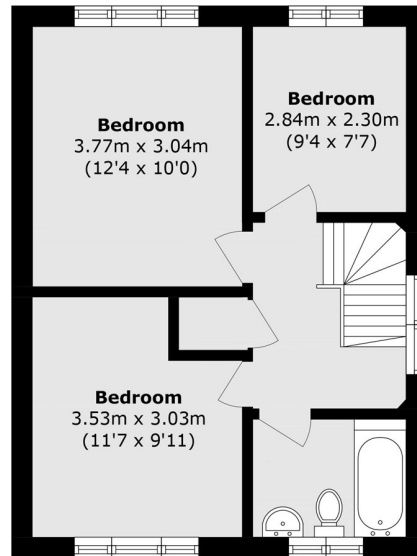
- End Of Terrace Family Home • Four Bedrooms • Two Bathrooms •
- Large Living Reception • Private Driveway • Private Garden •

Colin Dean Residential

in partnership with Dexters



Ground Floor



First Floor

Total area (approx.): 88.0 sq. m (947.2 sq. ft)

Colin Dean Residential
350 Pinner Road,
Harrow, HA1 4LB
020 8515 7929
daniel.murray@colindean.com

Energy Rating: C We aim to make our particulars both accurate and reliable. However they are not guaranteed; nor do they form part of an offer or contract. If you require clarification on any points then please contact us, especially if you're travelling some distance to view. Please note that appliances and heating systems have not been tested and therefore no warranties can be given as to their good working order.