



**Camden Road NW1**

**London**

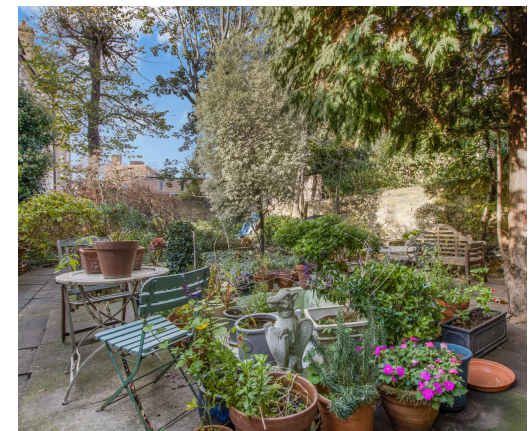
**OIEO £650,000**

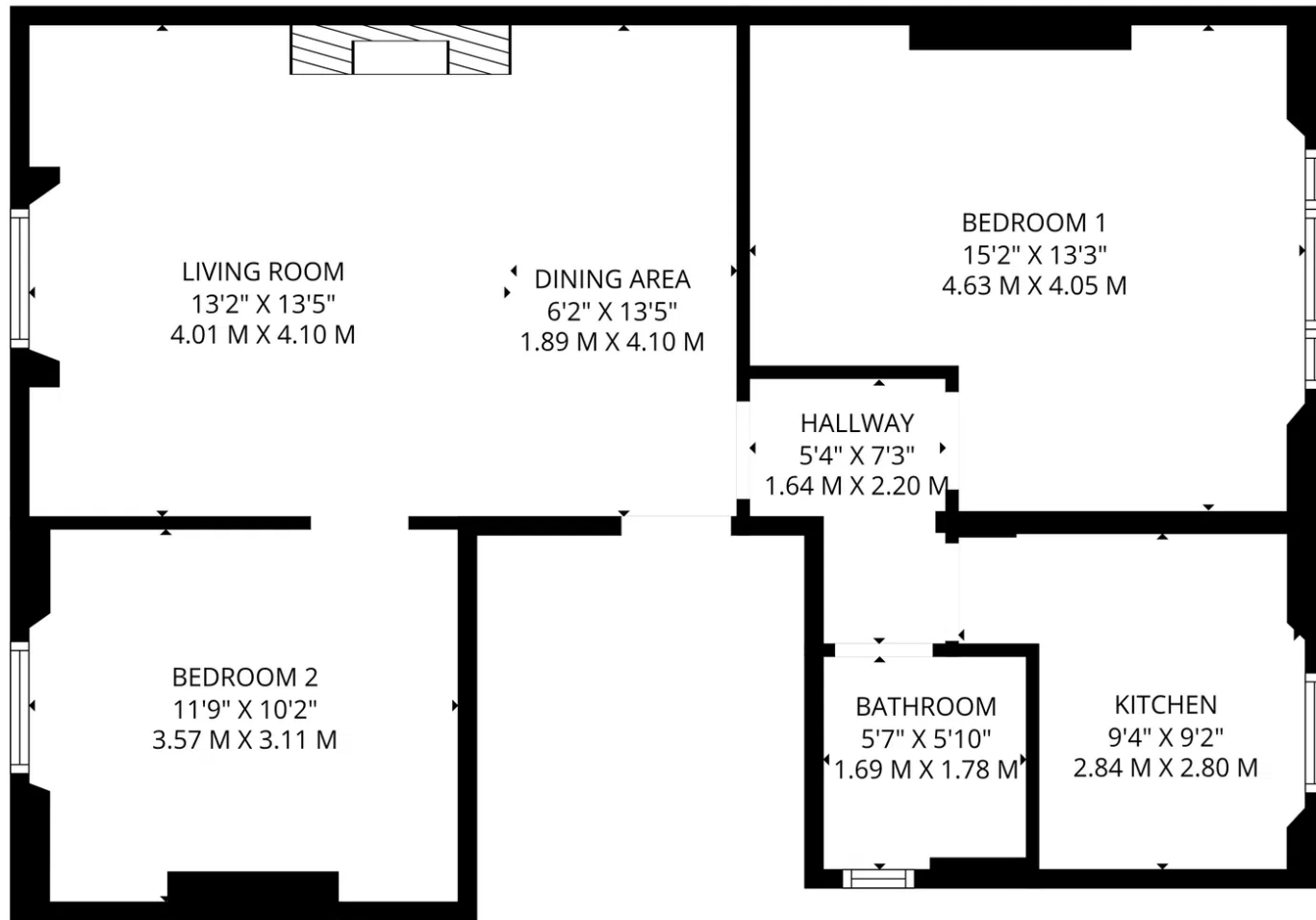
The large reception room features a large window to the rear, overlooking the communal gardens, and ornate ceiling coving and fitted shelving that aesthetically frame the rear window. The large main bedroom has ample fitted cupboards and secondary glazing, whilst the second double bedroom offers views of the rear communal gardens. The kitchen was refurbished by the current owners; it's stylish, functional and fitted with good-quality appliances. There is a modern shower room too, which all adds to the appeal of this flat.

The communal garden is shared between the four flats in the building. It has a mixture of paved areas, planted beds and mature shrubs; to the rear, there is a raised patio area, ideal for relaxing with a good book. It's peaceful and offers a tranquil spot away from the hustle and bustle. Further green spaces can be enjoyed at Cantlowes Gardens, Caledonian Park, Montpelier Gardens and Camden Square.

The local area captures the true spirit of London. The iconic Camden Town is close by and offers an eclectic collection of culture, music, food and atmosphere through its excellent array of restaurants, bars and the famous Camden Market. Kentish Town (Northern line) and Caledonian Road (Piccadilly line) are within easy reach, along with numerous buses. Brecknock Road is just around the corner, and here you will find a brilliant mix of shops; of note are Salvino Italian Grocery, Bread by Bike, Thrifty Beans and Cramers Butchers, but there are many more to be explored and enjoyed.

Please Quote Ref: AW1324





**TOTAL: 719 sq. ft, 67 m2**  
1st Floor: 719 sq. ft, 67 m2  
EXCLUDED AREAS: WALLS: 69 sq. ft, 6 m2

FLOOR PLAN CREATED BY CUBICASA APP. MEASUREMENTS DEEMED HIGHLY RELIABLE BUT NOT GUARANTEED.



**Amanda Walker**

07817 598 309

[amanda.walker@exp.uk.com](mailto:amanda.walker@exp.uk.com)

<https://amandawalker.exp.uk.com>