



**Guide Price**  
**£539,000**

**Freehold**

4x  1x  2x 

**Cranborne Avenue,  
Maidstone, Kent ME15**

**OVER 60?**

Secure this property  
for up to **59% less!**

*Wards*  
Helping you move forwards



## Main features

- Heavily extended and a large kitchen/diner
- Nearby to top grammar schools
- Immaculately presented with modern decor throughout
- Large sunny garden with room to entertain family and friends
- A quiet location nearby to Mote Park and other amenities

## Accommodation

### GROUND FLOOR

Entrance Hall  
 Lounge: 12'6 x 12'1 (3.81m x 3.69m)  
 Dining Area/Dining Area: 18'9 x 12'4 (5.72m x 3.76m) plus 12'5 x 11'0 (3.79m x 3.36m)  
 Shower Room

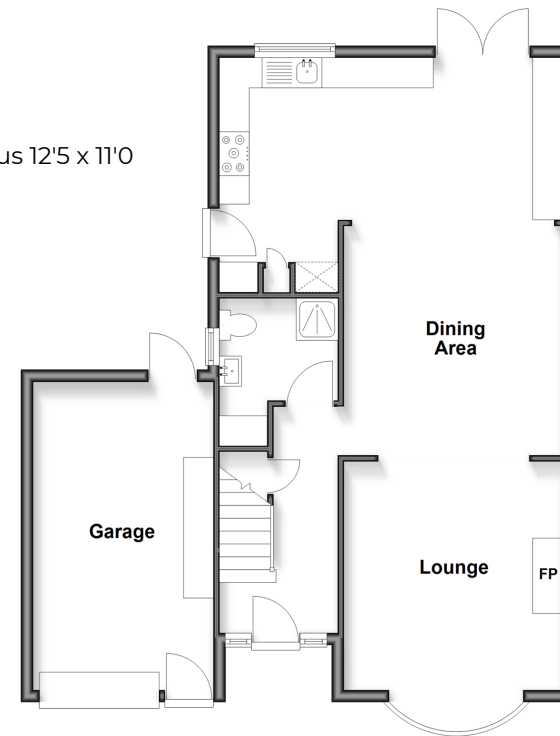
### FIRST FLOOR

Landing  
 Bedroom 1: 9'11 x 9'5 (3.02m x 2.87m)  
 Bedroom 2: 12'7 x 12'0 (3.84m x 3.66m)  
 Dressing Area: 9'4 x 7'2 (2.85m x 2.19m)  
 Bedroom 3: 12'6 x 8'6 (3.81m x 2.59m)  
 Bathroom

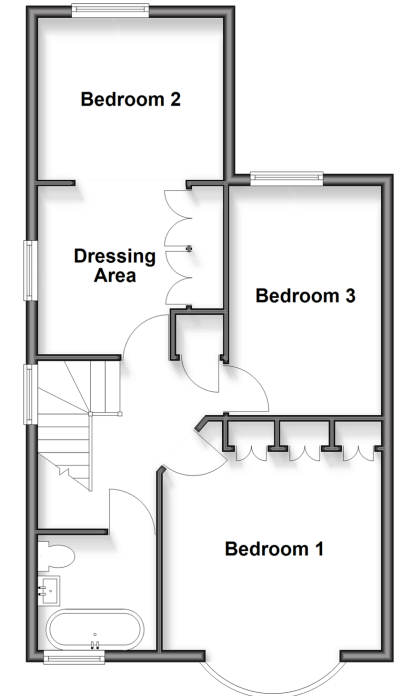
### OUTSIDE

Driveway  
 Garage  
 Rear Garden

**Ground Floor**  
 Approx. 74.6 sq. metres (802.6 sq. feet)



**First Floor**  
 Approx. 53.3 sq. metres (573.7 sq. feet)



Call Maidstone - 01622 683737 ■ [wardsofkent.co.uk](http://wardsofkent.co.uk)

■ Legal advice should be taken to verify fixtures/fittings, planning, alterations and/or lease details  
 ■ Through a Homewise Home For Life Plan people aged 60+ can secure this property for up to 59% less, by purchasing a Lifetime Lease

■ Appliances & services are untested, dimensions are approximate and floor plans are not to scale



13159118/20260209/JH/DS