



LINDEN GARDENS, W8



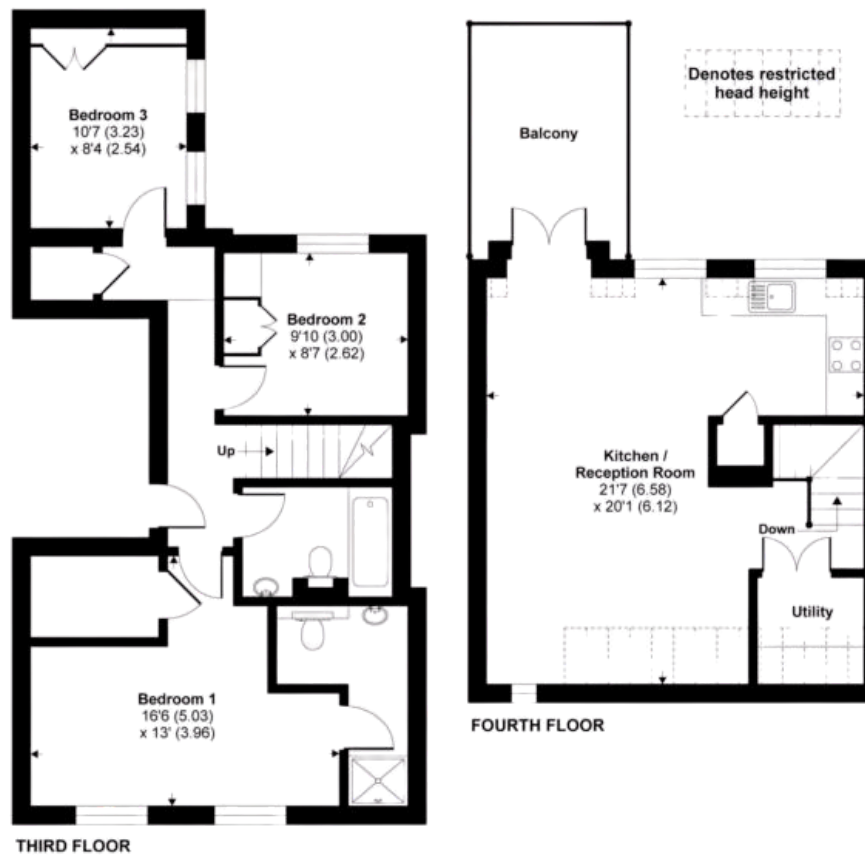
## Linden Gardens, W8

Set within a handsome Victorian building on one of Notting Hill's most conveniently located streets, this upper floor maisonette offers refined living in a prime location. This three bedroom property is beautifully presented and flooded with natural light throughout, thanks to its generous proportions. The flat benefits from wooden flooring, dressing room and two bathrooms and a wonderful loft-style double reception room with doors to a sunny roof terrace.

Linden Gardens is a tree-lined cul-de-sac in one of the most desired streets of Notting Hill. The property is conveniently located with an array of restaurants, shops and transport links (Notting Hill Gate underground station for the central, circle and district line). Additionally, the green open spaces Kensington Gardens are nearby.



Approx. Gross Internal Area  
= 972 sq ft / 90.2 sq m



## Linden Gardens, W8 - Share of Freehold

Local Authority - Royal Borough of Kensington & Chelsea

- Three bedrooms
- Two bathrooms
- South facing roof terrace
- Wood flooring
- Council Tax Band: G
- Remaining Lease: 986 years



Whilst every attempt has been made to ensure the accuracy of the floor plan, measurements are approximate and not to scale. No guarantee is given on the total square footage of the property quoted on the plan. Figures given are for guidance. Plan is for illustration purposes only, not to be used for valuations.