



Bedford Road, N2

£1,440 Per Month

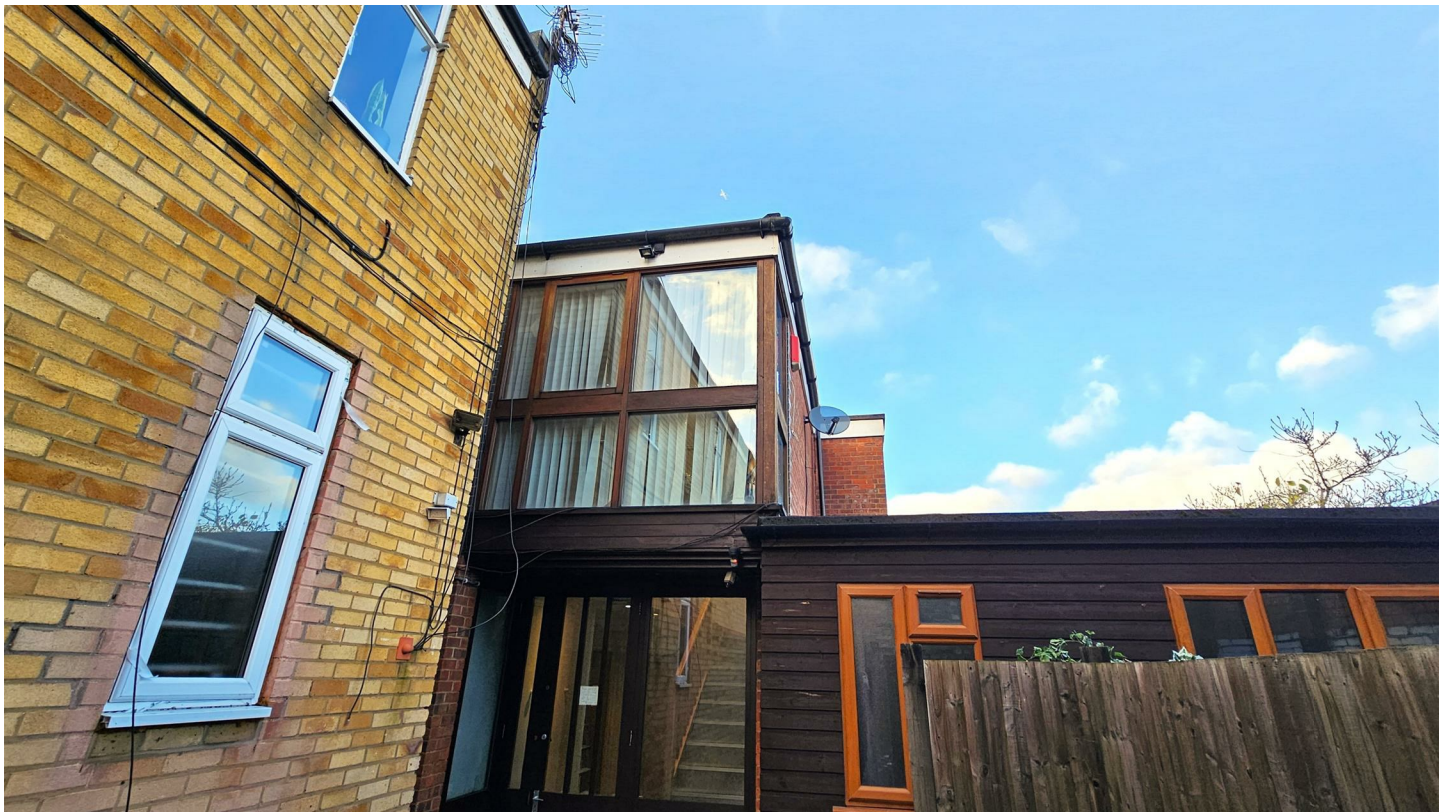
- 1 bedroom flat
- Available mid-February
- Close to amenities
- Close to tube (Northern Line, Zone 3)
- New kitchen to be fitted
- EPC rating C
- Council tax C

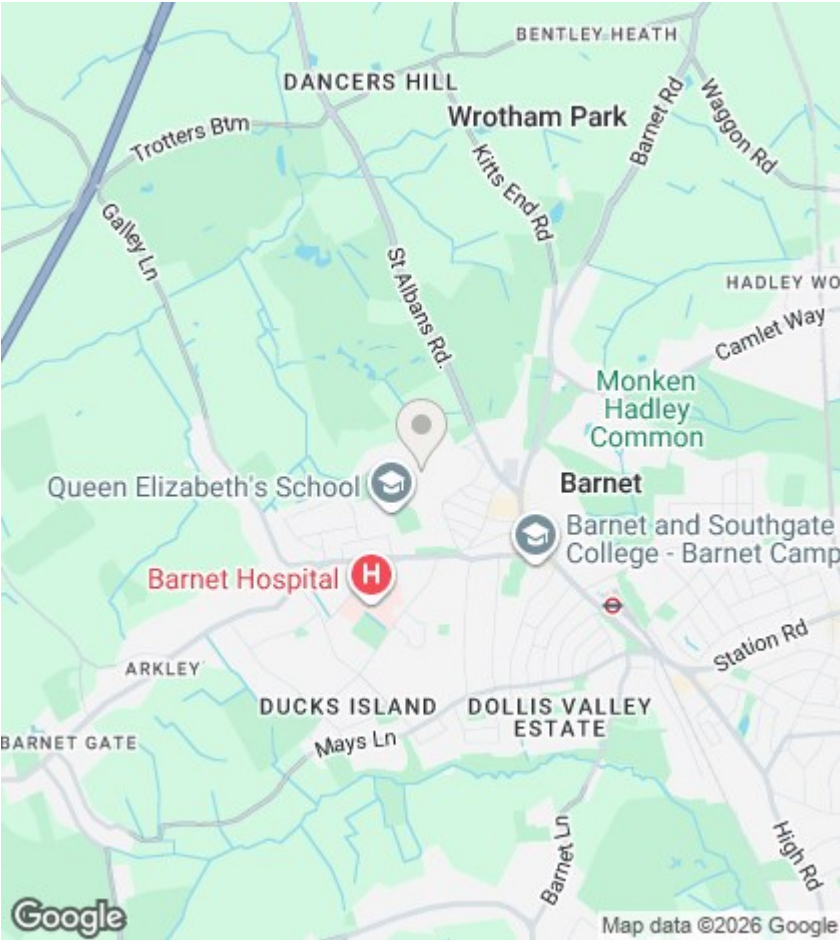
Limerick Mews, East Finchley, N2 9DD

A one-bedroom furnished first-floor flat in a modern condition. Features include an open-plan kitchen/lounge, utility area and parquet-effect flooring throughout. New kitchen to be fitted in-between tenancies. Conveniently located on Bedford Road (County Road), moments from local shops and a five-minute walk to East Finchley Underground Station (Northern Line, Zone 3). A cat may be considered. EPC rating C, Council Tax band C and available from mid-February.



Council Tax Band: C





Directions

Viewings

Viewings by arrangement only. Call 020 8444 5222 to make an appointment.

EPC Rating:
C

Energy Efficiency Rating		
	Current	Potential
Very energy efficient - lower running costs		
(92 plus) A		
(81-91) B		
(69-80) C	72	74
(55-68) D		
(39-54) E		
(21-38) F		
(1-20) G		
Not energy efficient - higher running costs		
England & Wales		EU Directive 2002/91/EC