



Quaker Lane | Farnsfield | Newark | NG22 8EE

£225,000



Jonathan Fitzpatrick
VILLAGE & COUNTRY HOMES

Quaker Lane | Farnsfield

Newark | NG22 8EE

£225,000

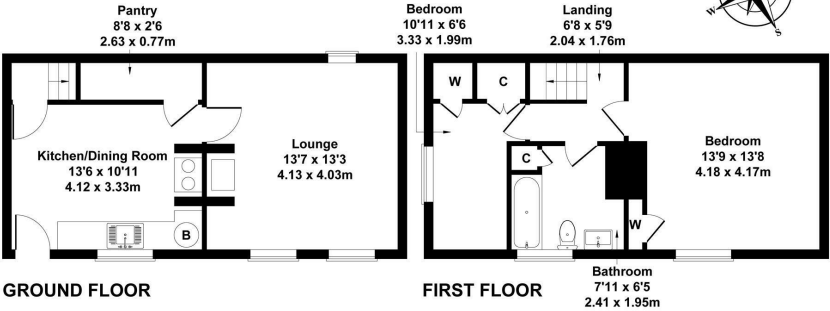
This two-bedroom end-terrace cottage on Quaker Lane offers period character, generous proportions and clear scope to add value, albeit requiring comprehensive updating—making it best suited to purchasers with renovation experience. The accommodation includes exposed beams, a farmhouse-style kitchen with Aga, and a cosy sitting room with fireplace that together reflect the home's original charm; upstairs are two bedrooms and a re-fitted bathroom, while outside there is a substantial south-facing garden complemented by practical brick outbuildings. The property is located within a much sought after area of the village, offering an excellent lifestyle experience, with shops, pubs, cafés and countryside walks all close at hand. A realistic asking price has been set to reflect the works required, presenting a genuine opportunity to restore and enhance a charming cottage in a sought-after location.

- Very attractive 2 bedroom end terrace in prime village location
 - Breakfast kitchen with Aga cooker
 - Attractive south facing walled garden
 - Potential for off road parking - subject to consent
 - No onward chain
- Beamed lounge with fireplace
 - Re-fitted first floor bathroom
 - Large outbuilding plus additional brick stores
 - Require updating - but price adjusted to reflect work required



Greengate Cottage, Quaker Lane, Farnsfield, Newark NG22 8EE

Approximate Gross Internal Area
721 sq ft - 67 sq m



Not to Scale. Produced by The Plan Portal 2025
For Illustrative Purposes Only.

Energy Efficiency Rating		
	Current	Potential
Very energy efficient - lower running costs		
(92 plus) A	60	90
(81-91) B		
(69-80) C		
(55-68) D		
(39-54) E		
(21-38) F		
(1-20) G		
Not energy efficient - higher running costs		
England & Wales		EU Directive 2002/91/EC

64 Main Street
Farnsfield
Nottinghamshire
NG22 8EF
01623 392676
mail@jfea.co.uk
www.jfea.co.uk