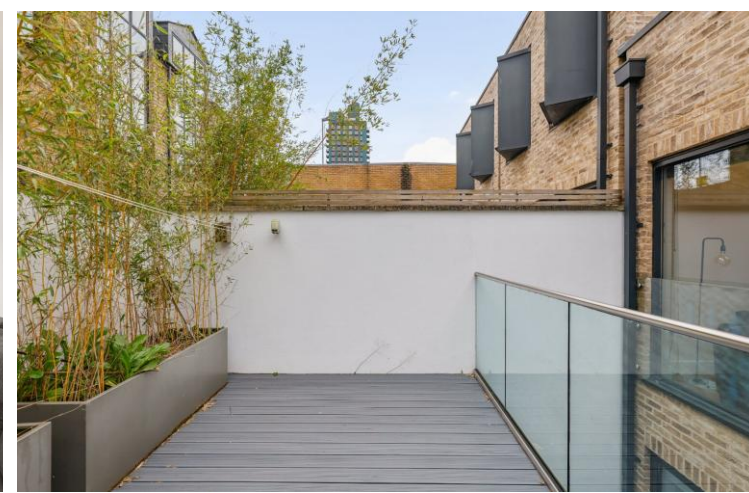




Edison Mews  
London, SW18

CHESTERTONS





A well-presented four-bedroom mews house arranged over three floors. The property benefits from open-plan living, a south-facing garden, and private off-street parking.

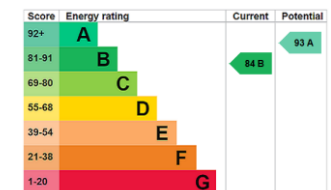
The main living space is a bright and spacious open-plan kitchen/reception room, finished to a high standard and enhanced by a vaulted ceiling with skylight, providing great natural light throughout. The reception area leads directly onto a private south-facing garden.

The upper floor comprises a principal bedroom with en-suite shower room, a second room suitable as a small double bedroom, study, nursery or dressing room, and an additional shower room. On the lower level are two further double bedrooms, a family bathroom, and a useful utility room.

Edison Mews is ideally positioned close to Southside Shopping Centre and the Ram Quarter, with Wandsworth Town station within easy reach, as well as a number of green open spaces.

- Contemporary family home
- 1367sqft
- Four bedrooms, three bathrooms
- Utility Room and guest WC
- Allocated parking
- Chain free

Asking Price £1,175,000



**Tenure:** Freehold

**Local Authority:** London Borough of Wandsworth

**Council Tax Band:** G

*Chestertons Wandsworth Sales*

47 East Hill

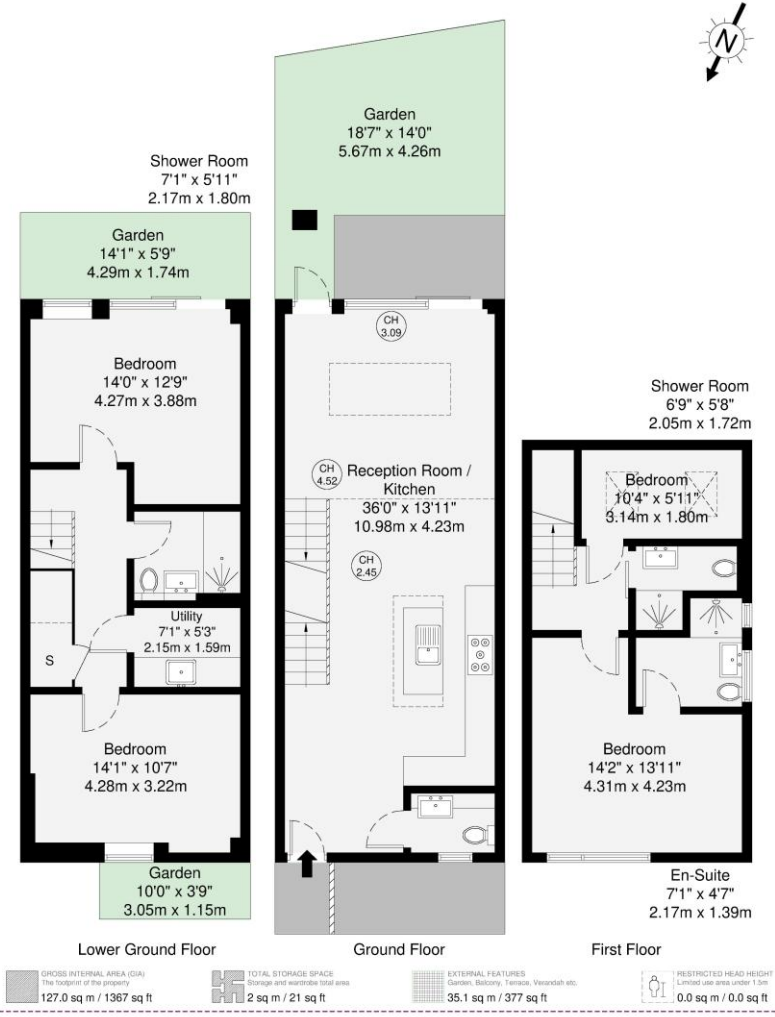
London

SW18 2QE

wandsworth@chestertons.co.uk

0208 104 7530

chestertons.co.uk



Disclaimer: Floorplan measurements are approximate and are for illustrative purposes only. While we do not doubt the floorplan accuracy and completeness, you or your advisors should conduct a careful, independent investigation of the property in respect of monetary valuation.

Maison  
VUE

