

Arundel Drive

South Harrow • • HA2 8PP

Asking Price: £640,000



coopers
est 1986

Arundel Drive

South Harrow • • HA2 8PP

Nestled in the sought-after area of Harrow, this beautifully designed four-bedroom semi-detached property offers a perfect combination of comfort and practicality. With a generous total area of approximately 1,293 sq. ft (120.1 sq. m), including a garage, this home is ideal for growing families.

FOUR BEDROOMS

SEMI DETACHED

RECEPTION/DINING ROOM

KITCHEN

GARAGE

FAMILY BATHROOM

IDEAL LOCATION

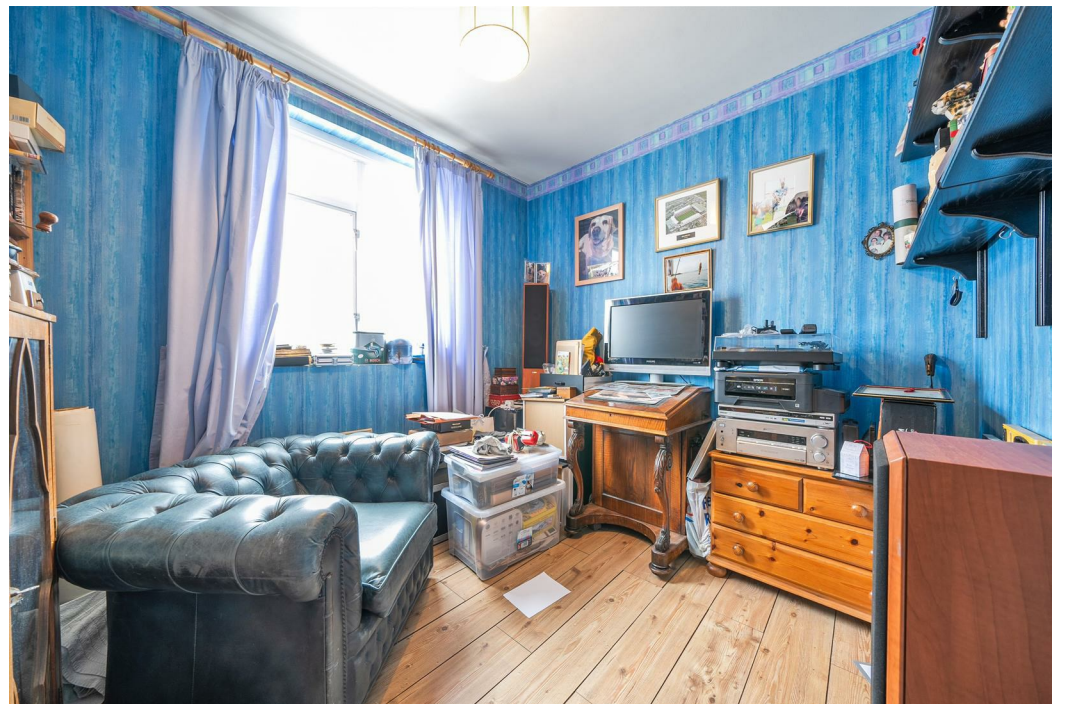
FAMILY HOME

GARDEN

1293 SQ.FT

These particulars are intended as a guide and must not be relied upon as statements of fact. Your attention is drawn to the Important Notice on the last page.





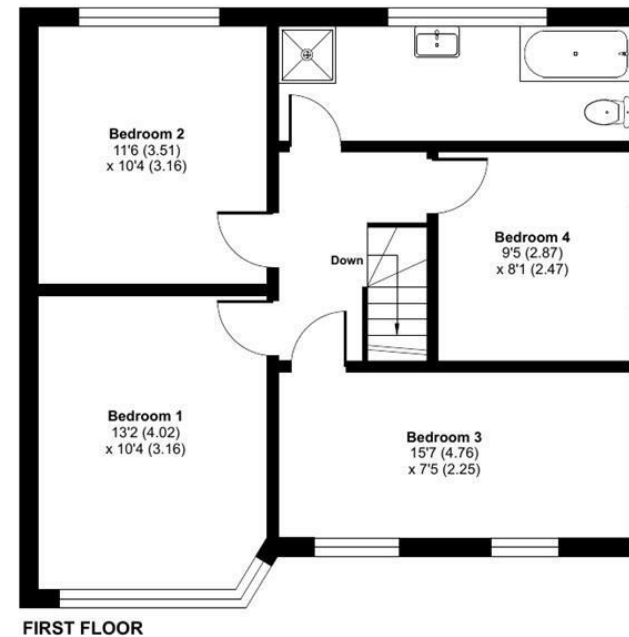
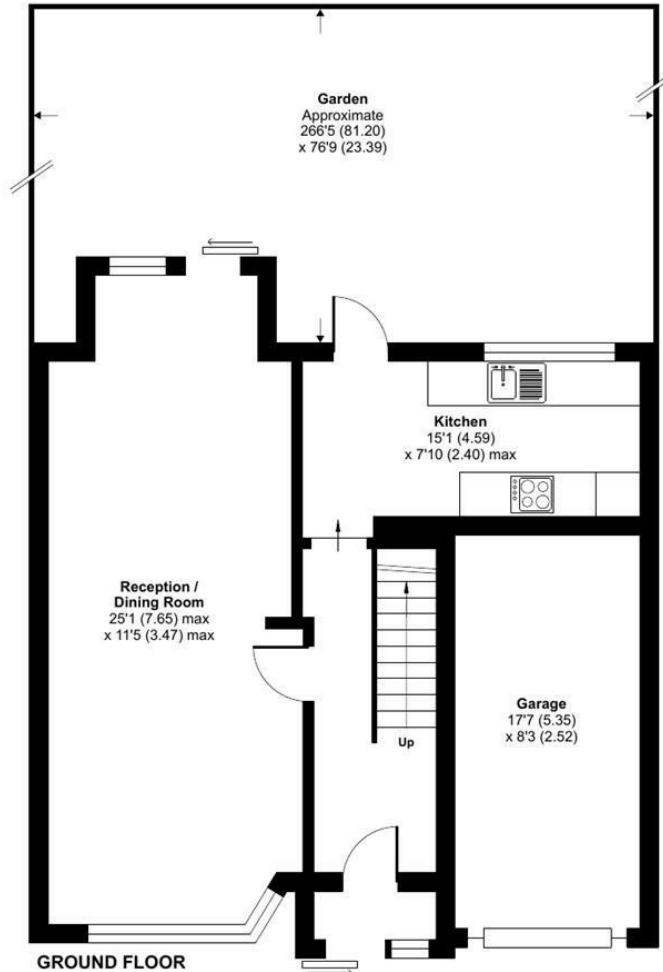
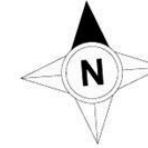
Arundel Drive, Harrow, HA2

Approximate Area = 1148 sq ft / 106.6 sq m

Garage = 145 sq ft / 13.4 sq m

Total = 1293 sq ft / 120.1 sq m

For identification only - Not to scale



Floor plan produced in accordance with RICS Property Measurement 2nd Edition, Incorporating International Property Measurement Standards (IPMS2 Residential). © nclhecom 2025. Produced for Coopers. REF: 1234092

coopers
est 1986

coopers
est 1986

71 Victoria Road, Ruislip Manor,
Middlesex, HA4 9BH
ruislipmanor@coopersresidential.co.uk

CoopersResidential.co.uk

Energy Efficiency Rating		
Very energy efficient - lower running costs	Current	Target
A++ (92-100)		
A+ (89-91)		
A (86-88)		
B+ (83-85)		
B (81-82)		
C+ (78-80)		
C (76-77)		
D (73-75)		
E (69-72)		
F (66-68)		
G (63-65)		
Not energy efficient - higher running costs		
England & Wales		
EU Directive 2002/91/EC		

Important Notice: These particulars, whilst believed to be accurate are set out as a general outline only for guidance and do not constitute any part of an offer or contract. Intending purchasers should not rely on them as statements or representation of fact, but must satisfy themselves by inspection or otherwise has the authority to make or give any representation or warranty in respect of the property.