

# Admiralty Close

Middlesex • Hillingdon • UB7 9NJ

PCM: £1,700 PCM



coopers  
est 1986

A well presented and spacious two double bedroom two bathroom apartment to rent located within walking distance to West Drayton Station which provides easy access Central London via the Elizabeth Line. West Drayton High Street and it's local amenities are also within walking distance. Stockley Business Park and the M4/M25 Motorways are easy accessible.

Features include two double bedrooms, two bathrooms, spacious lounge, kitchen with appliances, great storage throughout, allocated parking and gas central heating.

Available Furnished

Two Double Bedrooms

Two Bathrooms

Spacious Lounge

Fitted Kitchen

Great Storage Throughout

Gas Central Heating

Easy Access to West Drayton Station

Walking Distance to West Drayton High Street

Nearby to Stockley Business Park

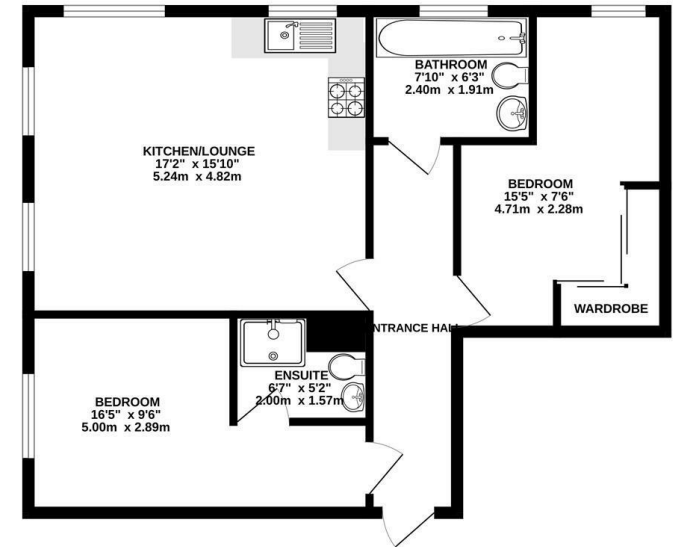
Allocated Parking

**Available Date**

25th March 2026



GROUND FLOOR  
649 sq.ft. (60.3 sq.m.) approx.



TOTAL FLOOR AREA : 649 sq.ft. (60.3 sq.m.) approx.  
Whilst every attempt has been made to ensure the accuracy of the floorplan contained herein, measurements of doors, windows, rooms and any other items are approximate and no responsibility is taken for any error, omission or mis-statement. This plan is for illustrative purposes only and should be used as such by any prospective purchaser. The services, systems and appliances shown have not been tested and no guarantee as to their operability or efficiency can be given.  
Made with Mapbox ©2026



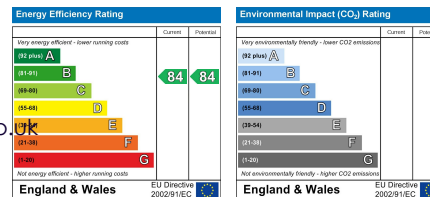
**coopers**  
est 1986

**01895 257 566**

**1 Vine Street, Uxbridge,  
Middlesex, UB8 1QE**

propertymanagement@coopersresidential.co.uk

**CoopersResidential.co.uk**



Important Notice: These particulars, whilst believed to be accurate are set out as a general outline only for guidance and do not constitute any part of an offer or contract. Intending purchasers should not rely on them as statements or representation of fact, but must satisfy themselves by inspection or otherwise has the authority to make or give any representation or warranty in respect of the property.