

Sinclair  Hammelton

ASKING PRICE

£650,000

Oaklands Road

Bromley, BR1 3SN

PROPERTY SUMMARY

Sinclair Hammelton are proud to present this beautifully presented three/four bedroom end-of-terrace family home, situated on a highly desirable tree-lined road in Bromley. Ideally located, the property is just 0.6 miles from three train stations on different lines, being Shortlands, Bromley North and Ravensbourne, while also benefitting from excellent local bus links, close to desirable schools and nearby amenities.

The accommodation comprises a spacious entrance hallway with attractive parquet flooring. To the ground floor there is a versatile garage space offering excellent potential for conversion, subject to the necessary consents, along with a study/fourth bedroom and a useful utility room.

The first floor boasts a bright and spacious dual-aspect open-plan living area, seamlessly combining the lounge, dining space and modern fitted kitchen, creating the perfect environment for both family living and entertaining as well as W/C.

To the second floor are two generous double bedrooms, both benefitting from built-in storage, a well-proportioned single bedroom and a contemporary family bathroom.

Externally, the property enjoys a mature rear garden extending to almost 100ft, predominantly laid to lawn with a patio seating area ideal for outdoor dining and relaxation. To the front, there is off-street parking.

Early viewing is highly recommended to fully appreciate all that this fantastic family home has to offer.

4



1



1



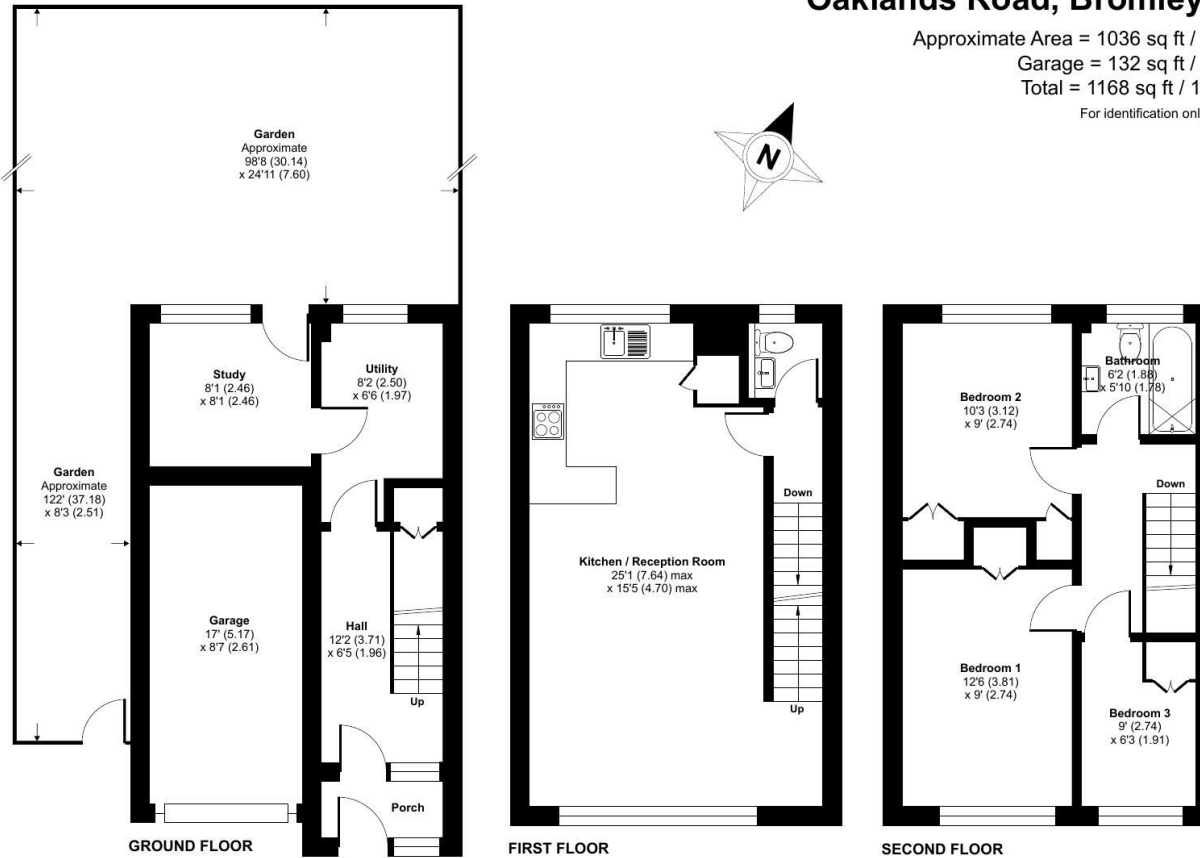






Oaklands Road, Bromley, BR1

Approximate Area = 1036 sq ft / 96.2 sq m
 Garage = 132 sq ft / 12.2 sq m
 Total = 1168 sq ft / 108.5 sq m
 For identification only - Not to scale



LOCAL AUTHORITY

TENURE
Freehold

EPC RATING:
C

COUNCIL TAX BAND
E

VIEWINGS
By prior appointment only

Energy Efficiency Rating		Current	Potential
Very energy efficient - lower running costs			
(92 plus) A			84
(81-91) B			
(69-80) C		69	
(55-68) D			
(39-54) E			
(21-38) F			
(1-20) G			
Not energy efficient - higher running costs			
England & Wales		EU Directive 2002/91/EC	

Agents Note: Whilst every care has been taken to prepare these particulars, they are for guidance purposes only. All measurements are approximate and are for general guidance purposes only and whilst every care has been taken to ensure their accuracy, they should not be relied upon and potential buyers/tenants are advised to recheck the measurements

Floor plan produced in accordance with RICS Property Measurement 2nd Edition, Incorporating International Property Measurement Standards (IPMS2 Residential). © nchecom 2026. Produced for Withers & Curling. REF: 1473414



OFFICE ADDRESS

23 High Street
Bromley
Kent
BR1 1LG

OFFICE DETAILS

0208 464 5566
info@sinclairhammelton.co.uk
https://www.sinclairhammelton.co.uk
for-sale-in-bromley/