



Location: The Cottage is set in the heart of this thriving community within easy walking distance of all the local amenities to include local stores, post office, public house, fish and chip shop and butchers. Just a short distance away is the hamlet of Westford which sides on to open countryside, providing numerous walks and outdoor pursuits. There is a regular bus service to Wellington which is approximately 1 mile distant with a large range of both independently run shops and larger national stores such as the well renowned Waitrose. The town itself stands between the River Tone and the Blackdown Hills.

Directions: From our town centre office, proceed in the Exeter direction going straight ahead at the town centre traffic lights and following the road out of town. At the second crossroad traffic lights, turn right into Rockwell Green. The property will be seen a short distance on the right hand side as indicated by our For Sale board.

GENERAL REMARKS AND STIPULATION

Tenure: The property is offered for sale Freehold, by private treaty with vacant possession on completion.

Services: Mains electricity, mains water, mains drainage, gas central heating, telephone

Local Authority: Somerset Council, County Hall, The Crescent, Taunton, TA1 4DY.

Property Location: w3w.co//outreach.thunder.troll

Council Tax Band: B

Construction: Render under a slate roof

Broadband and mobile coverage: We understand that there is good mobile coverage. The maximum available broadband speeds are 1000 Mbps download and 1000 Mbps upload. We recommend you check coverage on <https://checker.ofcom.org.uk/>.

Flood Risk: Surface Water: very low **Rivers and the Sea:** very low **Reservoirs:** Unlikely **Groundwater:** Unlikely

We recommend you check the risks on <https://www.gov.uk/check-long-term-flood-risk>

Planning: Local planning information is available on <https://www3.somersetwestandtaunton.gov.uk/asp/webpages/plan/plapplookup.asp>

IMPORTANT NOTICE Wilkie May & Tuckwood for themselves and for the vendors of the property, whose agents they are, give notice that: 1. the particulars are intended to give a fair and substantially correct overall description for the guidance of intending purchaser and do not constitute part of an offer or contract. Prospective purchasers and lessees ought to seek their own professional advice. 2. All descriptions, dimensions, areas, reference to condition and necessary permissions for use and occupation and other details are given in good faith, and are believed to be correct, but any intending purchasers should not rely on them as statements or representations of fact but must satisfy themselves by inspection or otherwise as to the correctness of each of them. 3. No person in the employment of Wilkie May & Tuckwood has any authority to make or give any representations or warranty

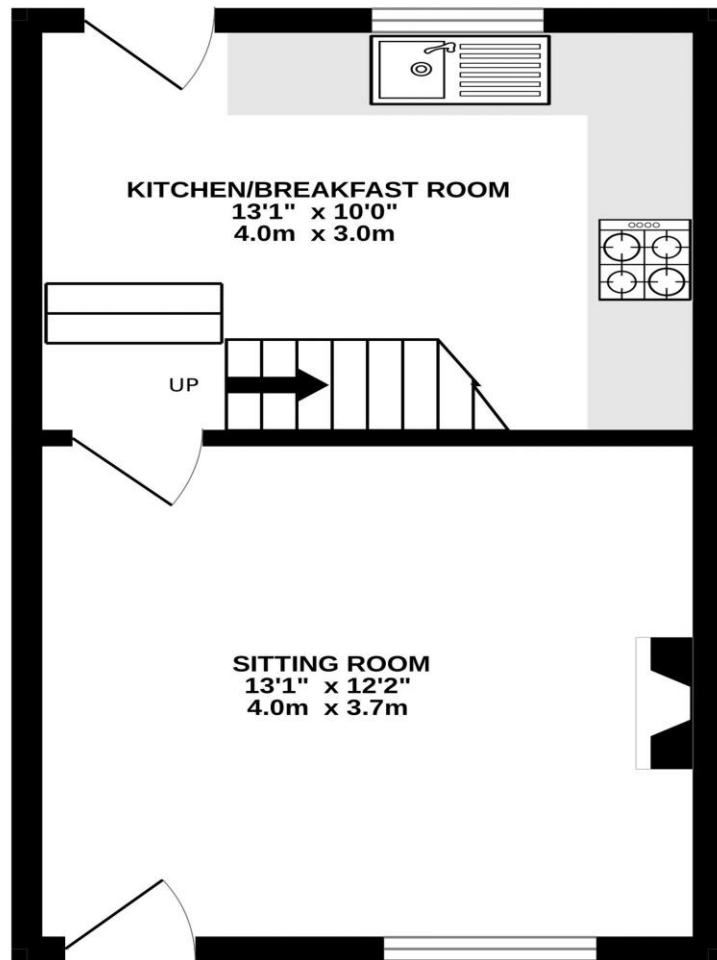
whatever in relation to this property on behalf of Wilkie May & Tuckwood, nor enter into any contract on behalf of the vendor. 4. No responsibility can be accepted for any expenses incurred by intending purchasers in inspecting properties which have been sold, let or withdrawn. MEASUREMENTS AND OTHER INFORMATION All measurements are approximate. While we endeavour to make our sales particular accurate and reliable, if there is any point which is of particular importance to you, please contact the office and we will be pleased to check the information with you.

Code of Practice for Residential Estate Agents: Effective from 1 August 2011:

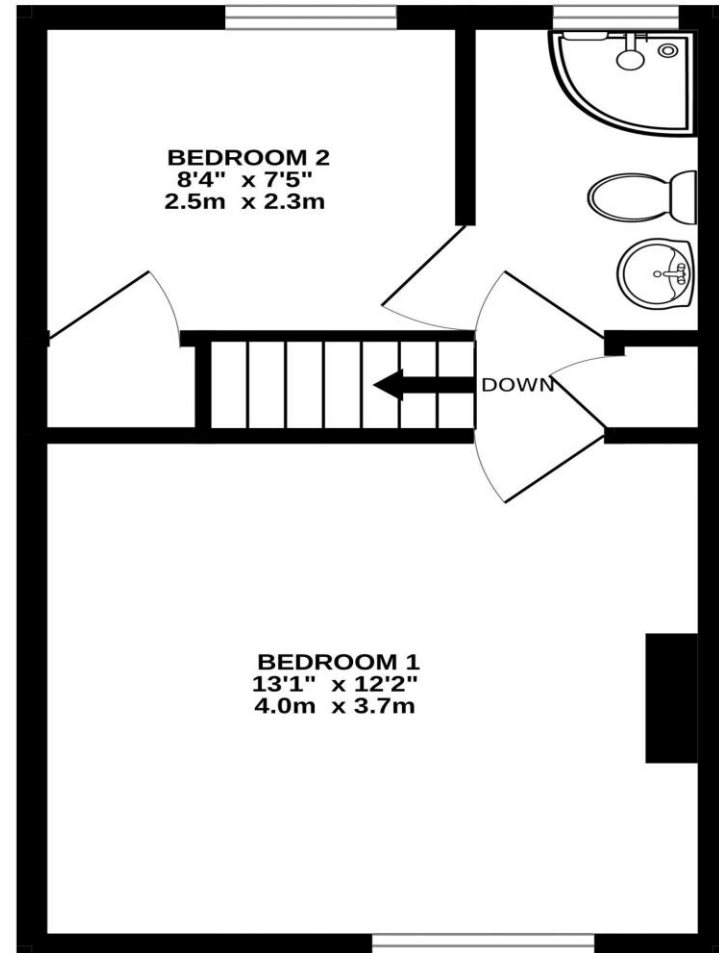
'8. Financial Evaluation 8a At the time that an offer has been made and is being considered by the seller, you must take reasonable steps to find out from the prospective buyer the source and availability of his funds for buying the property and pass this information to the seller. Such information will include whether the prospective buyer needs to sell a property, requires a mortgage, claims to be a cash buyer or any combination of these. Such relevant information that is available should be included in the Memorandum of Sale having regard to the provisions of the Data Protection Act.8b These reasonable steps must continue after acceptance of the offer until exchange of contracts (in Scotland, conclusion of missives) and must include regular monitoring of the prospective buyer's progress in achieving the funds required and reporting such progress to the seller.

The agent has not tested any apparatus, equipment, fixtures and fittings or services and so cannot verify that they are in working order or fit for their purpose. A Buyer is advised to obtain verification from their solicitor or surveyor. References to the Tenure of the Property are based on information supplied by the Seller. The agent has not had sight of the title documents. A Buyer is advised to obtain verification from their Solicitor.

GROUND FLOOR
286 sq.ft. (26.5 sq.m.) approx.



1ST FLOOR
286 sq.ft. (26.6 sq.m.) approx.



TOTAL FLOOR AREA : 572 sq.ft. (53.1 sq.m.) approx.

Whilst every attempt has been made to ensure the accuracy of the floorplan contained here, measurements of doors, windows, rooms and any other items are approximate and no responsibility is taken for any error, omission or mis-statement. This plan is for illustrative purposes only and should be used as such by any prospective purchaser. The services, systems and appliances shown have not been tested and no guarantee as to their operability or efficiency can be given.
Made with MetroPix ©2026

Wilkie May & Tuckwood are pleased to bring to the market this characterful terrace cottage with NO ONWARD chain.

The accommodation which is arranged over two floors briefly comprises a uPVC front door into the charming sitting room which offers an attractive feature fireplace. Steps lead down into the kitchen which is fitted with a comprehensive range of wall and base units and space for appliances, along with views over the garden.

To the first floor there are two bedrooms, the first a generous double. Both serviced by the family bathroom with a three-piece white shower suite.

Externally the large garden is perfect to entertain in the warmer months, with steps leading down to a lawn with shrub borders, a shed and rear access.

Warmed by gas central heating and benefitting from uPVC double glazing this cottage is perfectly placed close to local amenities



- Close to Local amenities
- Character Cottage
- Large Garden
- UPVC Windows
- Gas Central Heating

