



QUEENS CRESCENT, NW5

£500,000

Private Garden
No Onward Chain
Over 670 Sq Ft
Separate Kitchen
Near Local Amenities
Low Service Charges

@marshandparsons
marshandparsons.co.uk

MARSH &
PARSONS



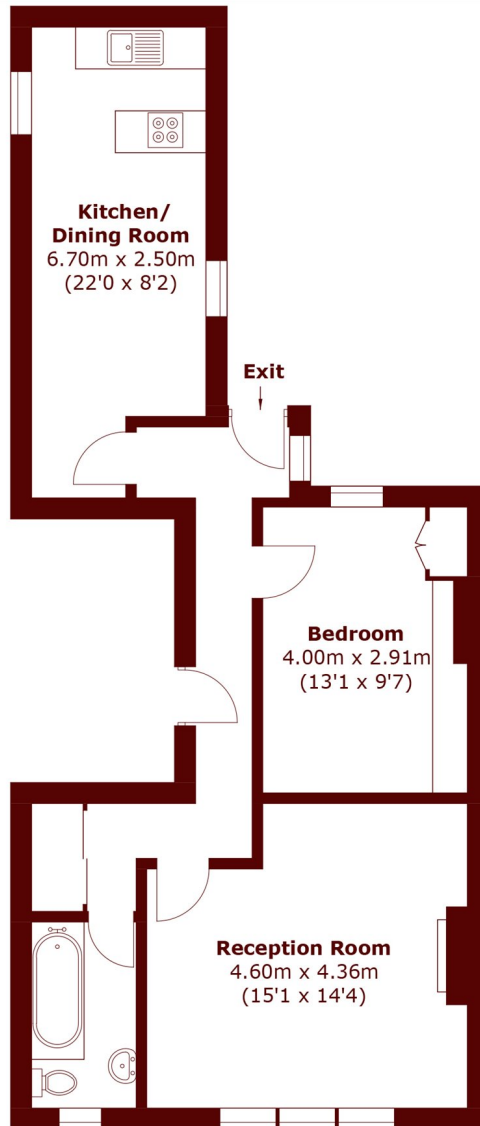
ABOUT THE PROPERTY

A spacious one-bedroom period conversion offering over 670 sq ft of living space, complete with its own private garden. The property features a separate living room, a large kitchen with dining area, and a well-appointed family bathroom.

Queens Crescent is ideally located within easy walking distance of both Chalk Farm and Kentish Town West stations. Camden Town, Kentish Town, and nearby green spaces are also within close reach, along with a selection of highly regarded local schools.



STEP INSIDE QUEENS CRESCENT



Total area (approx.): 62.4 sq. m (671.7 sq. ft)

Camden
020 7244 2200

Energy Rating: D We aim to make our particulars both accurate and reliable. However, they are not guaranteed; nor do they form part of an offer or contract. If you require clarification on any points then please contact us, especially if you're traveling some distance to view. Please note that appliances and heating systems have not been tested and therefore no warranties can be given as to their good working order

**MARSH &
PARSONS**