

Palatine Road, Goring-By-Sea
Worthing

Offers Over £500,000



29 Palatine Road

Goring-By-Sea, Worthing

Fully renovated 3 bed semi with open plan kitchen, large south-facing garden, double length garage, off-road parking, and patio. Chain free and ideal for families or professionals.

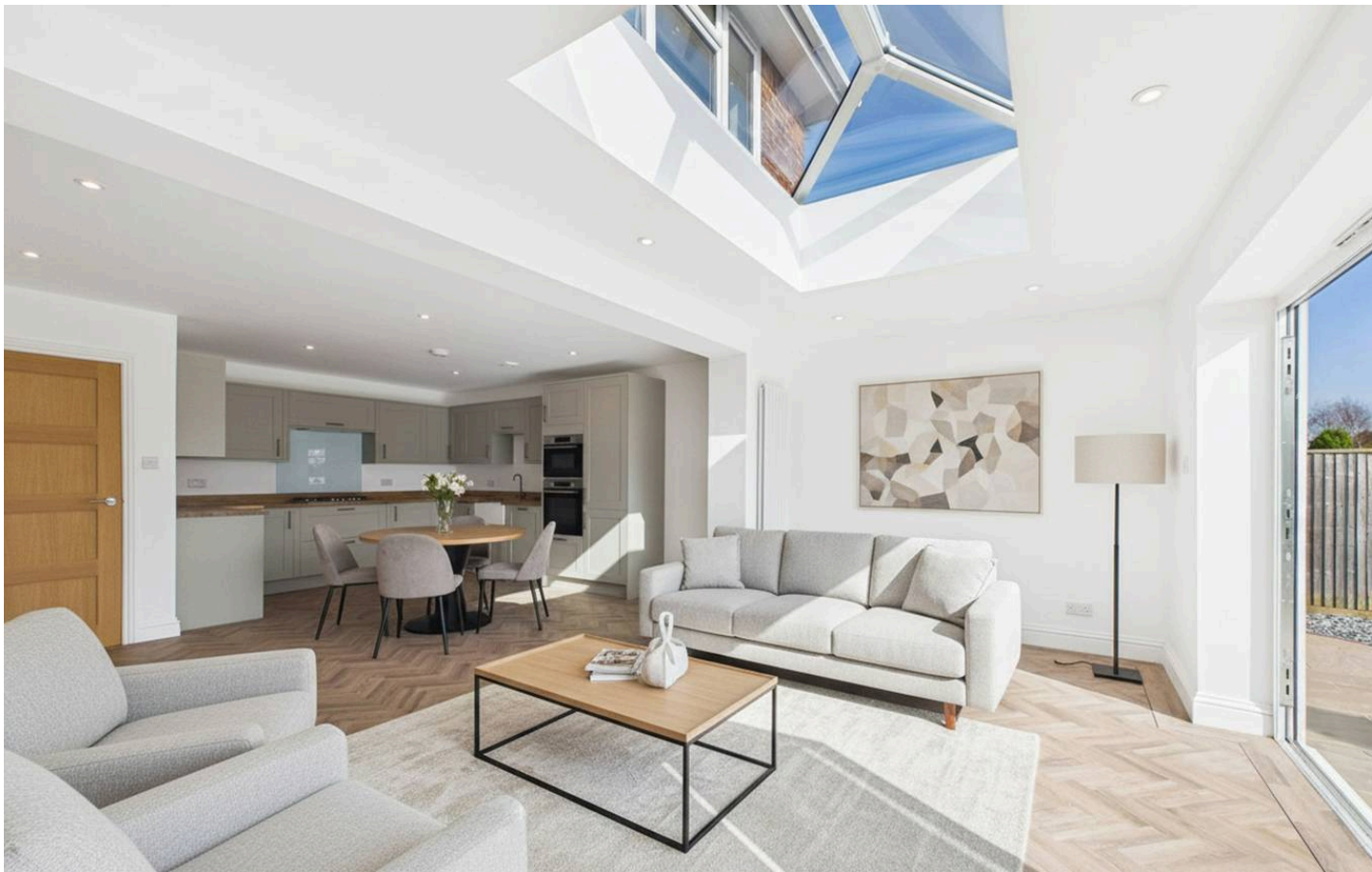
Council Tax band: D

Tenure: Freehold

EPC Energy Efficiency Rating: C

EPC Environmental Impact Rating: D

- Fully Renovated Semi Detached House
- Three Bedrooms
- Fantastic Size Open Plan Kitchen/Dining/Family Room with Integrated Appliances
- Separate Living Room
- Downstairs WC
- Fully Tiled Shower Room
- Double Length Garage with Electric Roller Door
- Large South Facing Rear Garden
- Off Road Parking for Multiple Vehicles
- Chain Free



Living Room / Additional Bedroom

10' 6" x 10' 11" (3.19m x 3.32m)

A separate living room or additional bedroom, with a window overlooking the front of the property. Please note that some of our images have been AI edited and therefore may not reflect the true appearance of the property.

Kitchen / Living Area

25' 8" x 20' 4" (7.83m x 6.20m)

A large kitchen/family room with a feature sky lantern filling the rooms with natural light due to its south aspect. Bi-folding doors leading to the garden. Please note that some of our images have been AI edited and therefore may not reflect the true appearance of the property.

Wc

5' 9" x 2' 11" (1.76m x 0.88m)

Downstairs cloakroom with wash basin.

Bedroom One

12' 4" x 11' 3" (3.75m x 3.44m)

Large bedroom overlooking the rear garden. Please note that some of our images have been AI edited and therefore may not reflect the true appearance of the property.

Bedroom Two

14' 3" x 11' 4" (4.34m x 3.46m)

Double room overlooking the front.

Bedroom Three

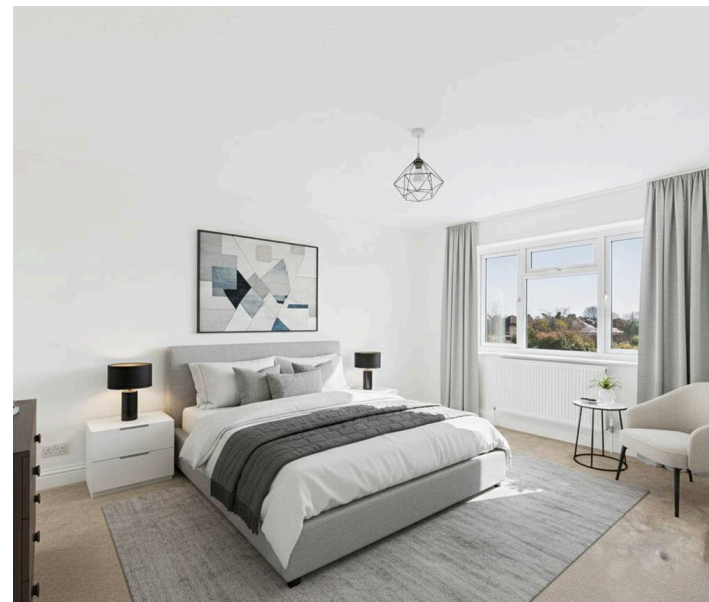
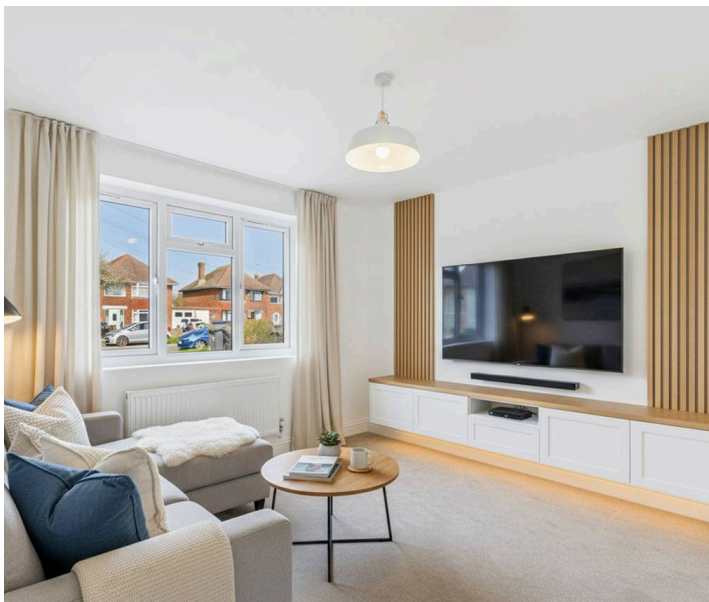
10' 0" x 7' 10" (3.06m x 2.40m)

Larger than average with a window overlooking the front.

Bathroom

5' 6" x 7' 1" (1.68m x 2.17m)

Fitted with a walk in shower, fully tiled walls and an obscured window.



GARDEN

A large, south facing property with a large patio from the bi-folding doors and the rear garage door. Please note that some of our images have been AI edited and therefore may not reflect the true appearance of the property.

OFF STREET

1 Parking Space

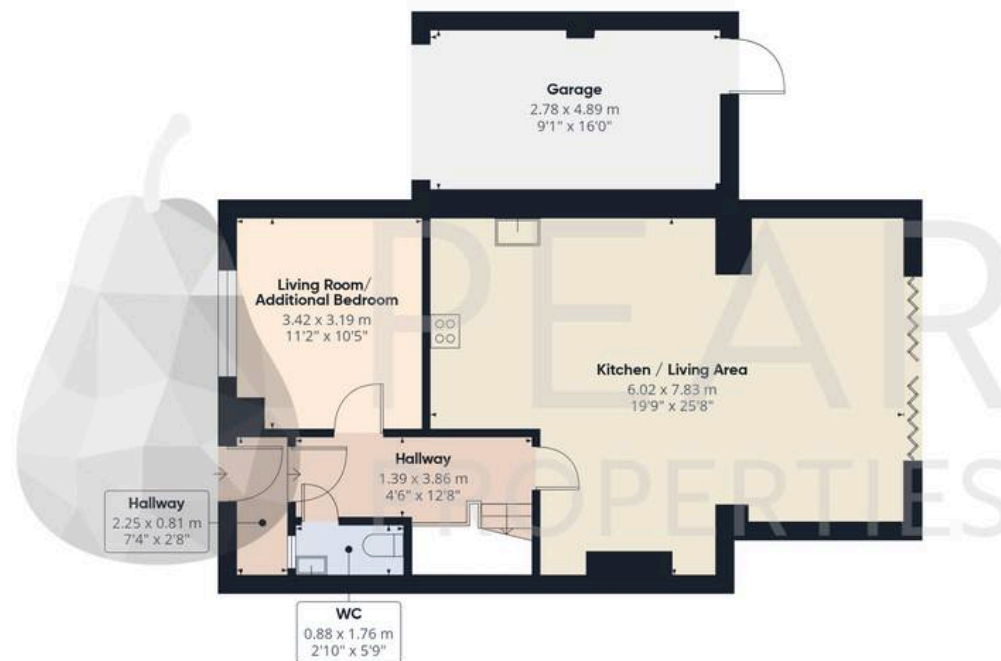
Off Street Parking for multiple cars leading to the garage.

GARAGE

Double Garage

An extended garage measuring 16ft in length.





Ground Floor

Approximate total area⁽¹⁾

118.1 m²

1272 ft²



Floor 1

(1) Excluding balconies and terraces

Calculations reference the RICS IPMS 3C standard. Measurements are approximate and not to scale. This floor plan is intended for illustration only.

GIRAFFE360





Pear Properties

20 Crabtree Lane, Lancing - BN15 9QP

01903 947337 · hello@pearproperties.uk · pearproperties.uk